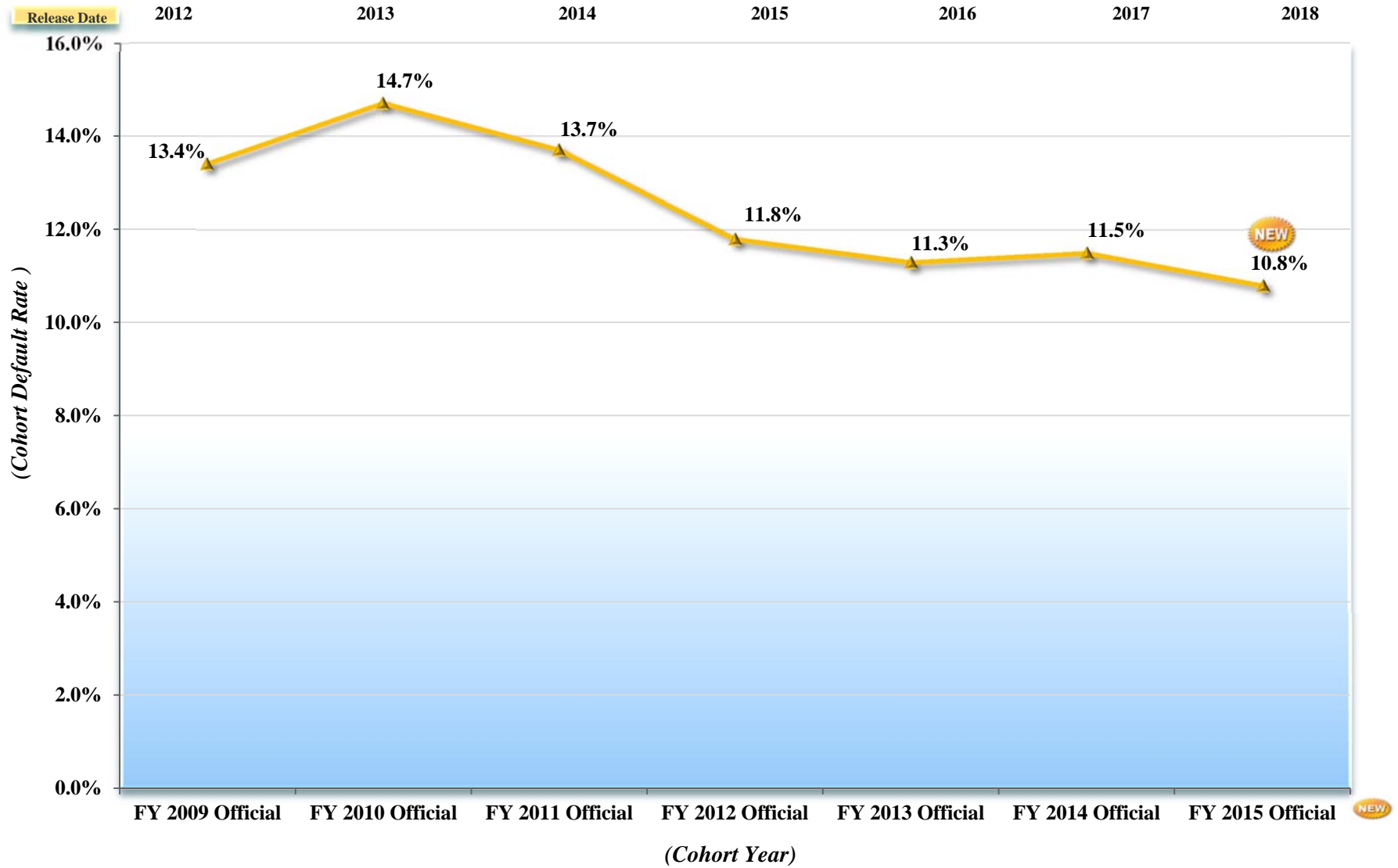


# National Student Loan Cohort Default Rates



## FY 2015 Official National Cohort Default Rates with Prior Year Comparison

	<b>NEW</b> Fiscal Year 2015 Official				Fiscal Year 2014 Official				Fiscal Year 2013 Official			
	# of Schools	Borrower Default Rate (%)	# of Borrowers Defaulted	# of Borrowers Entered Repayment	# of Schools	Borrower Default Rate (%)	# of Borrowers Defaulted	# of Borrowers Entered Repayment	# of Schools	Borrower Default Rate (%)	# of Borrowers Defaulted	# of Borrowers Entered Repayment
<b>Public</b>	<b>1,660</b>	<b>10.3%</b>	<b>269,876</b>	<b>2,616,327</b>	<b>1,663</b>	<b>11.3%</b>	<b>303,389</b>	<b>2,678,811</b>	<b>1,675</b>	<b>11.3%</b>	<b>305,516</b>	<b>2,691,995</b>
Less than 2 yrs	156	11.7%	1,152	9,838	151	13.8%	1,491	10,775	152	13.0%	1,414	10,823
2-3 yrs	807	16.7%	142,775	852,423	818	18.3%	169,325	921,537	846	18.5%	176,206	948,515
4yrs(+)	697	7.1%	125,949	1,754,066	694	7.5%	132,573	1,746,499	677	7.3%	127,896	1,732,657
<b>Private</b>	<b>1,726</b>	<b>7.1%</b>	<b>78,706</b>	<b>1,106,590</b>	<b>1,733</b>	<b>7.4%</b>	<b>82,867</b>	<b>1,108,120</b>	<b>1,734</b>	<b>7.0%</b>	<b>78,659</b>	<b>1,118,051</b>
Less than 2 yrs	48	22.0%	2,247	10,198	49	19.8%	1,654	8,312	50	20.6%	2,194	10,649
2-3 yrs	147	16.7%	5,541	33,070	157	17.6%	6,958	39,336	161	15.3%	6,593	42,974
4yrs(+)	1,531	6.6%	70,918	1,063,322	1,527	7.0%	74,255	1,060,472	1,523	6.5%	69,872	1,064,428
<b>Proprietary</b>	<b>2,364</b>	<b>15.6%</b>	<b>182,686</b>	<b>1,167,289</b>	<b>2,353</b>	<b>15.5%</b>	<b>194,027</b>	<b>1,250,242</b>	<b>2,326</b>	<b>15.0%</b>	<b>208,570</b>	<b>1,387,815</b>
Less than 2 yrs	1,263	17.9%	28,288	157,850	1,241	17.0%	27,459	161,350	1,214	16.9%	29,719	175,717
2-3 yrs	739	18.2%	43,556	238,277	746	17.5%	45,465	259,425	755	16.8%	52,187	310,345
4 yrs(+)	362	14.3%	110,842	771,162	366	14.6%	121,103	829,467	357	14.0%	126,664	901,753
<b>Foreign</b>	<b>405</b>	<b>3.5%</b>	<b>385</b>	<b>10,726</b>	<b>423</b>	<b>3.5%</b>	<b>388</b>	<b>10,780</b>	<b>418</b>	<b>3.6%</b>	<b>407</b>	<b>11,272</b>
<b>Unclassified</b>	<b>0</b>	<b>0.0%</b>	<b>0</b>	<b>0</b>	<b>1</b>	<b>0.0%</b>	<b>0</b>	<b>1</b>	<b>2</b>	<b>1.2%</b>	<b>30</b>	<b>2398</b>
<b>TOTAL</b>	<b>6,155</b>	<b>10.8%</b>	<b>531,653</b>	<b>4,900,932</b>	<b>6,173</b>	<b>11.5%</b>	<b>580,671</b>	<b>5,047,954</b>	<b>6,155</b>	<b>11.3%</b>	<b>593,182</b>	<b>5,211,531</b>