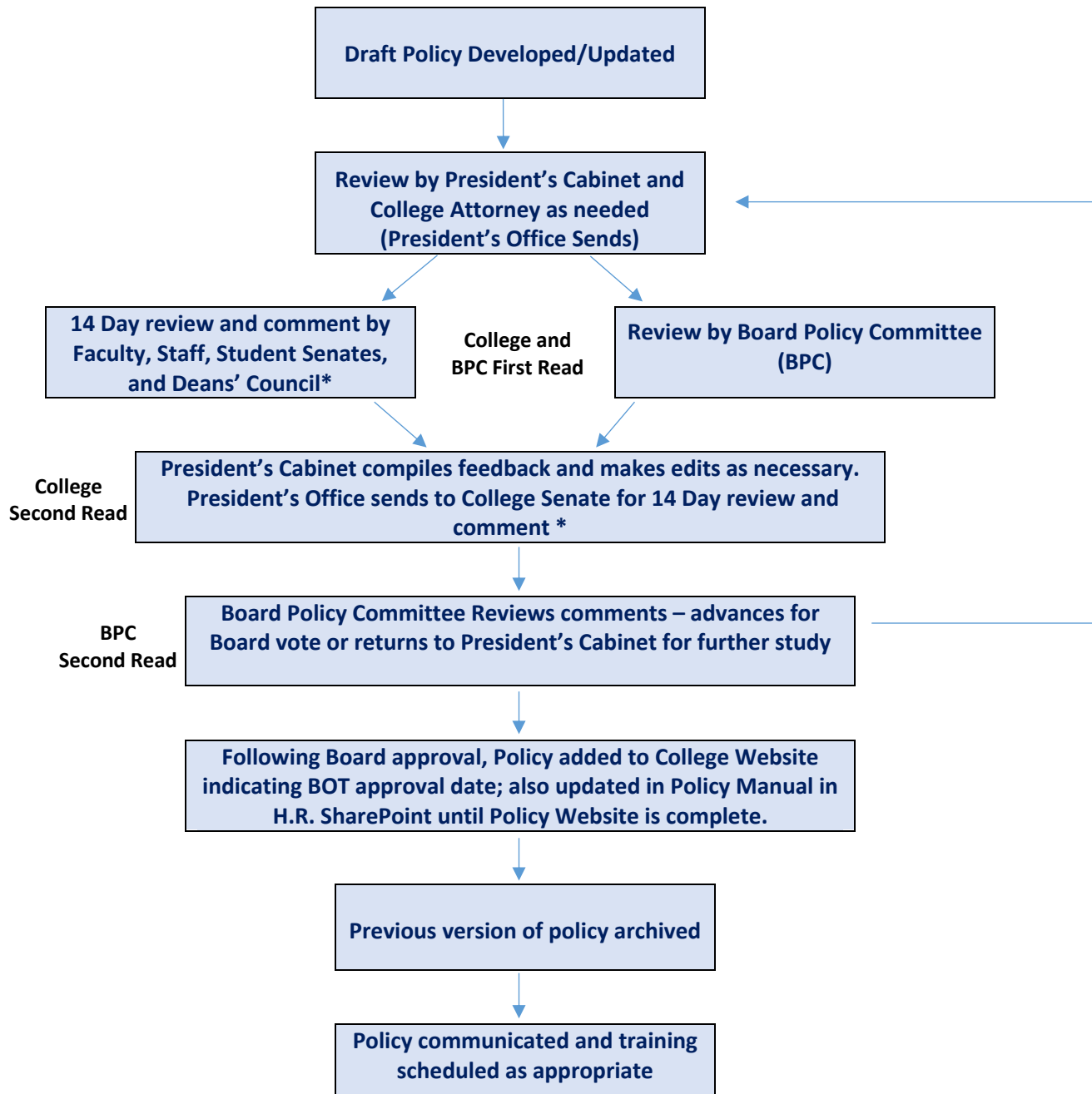


KANSAS CITY KANSAS COMMUNITY COLLEGE (KCKCC)

Policy Review Process



*Exceptions include policies and procedures that result from local, state or federal mandates (legal liability) which are approved by the Board of Trustees and communicated to the College for informational purposes and other non-substantive changes, such as changes on Board approved titles, Board approved fees/fines, grammatical corrections, and updated universally recognized definitions.

Revised: 11/18/2019