



Kansas City Kansas  
Community College™



“  
INSPIRE INDIVIDUALS &  
ENRICH OUR COMMUNITY ONE  
STUDENT AT A TIME”

## TABLE OF CONTENTS

Why KCKCC	4
Degree Programs	6
Cost of Attendance	8
Student Resources	10
Easy Transfers	12
Get a Little More	14
Location	16
Campus Community	18
Student Life	20
Athletics	22
Easy Enrollment	24
Admissions Office	25
Contact Information	26
Notes	27

# WHY KCKCC?

Kansas City Kansas Community College is committed to their students and strive to ensure all students have a positive and successful post-secondary experience.

Kansas City Kansas Community College is accredited by the Higher Learning Commission, a regional accreditation agency recognized by the U.S. Department of Education.



## Why should you choose KCKCC?

### Affordable



The affordability of KCKCC has affected me in a good way because it has allowed me to save money for my next step in my college journey.”

— Kayleen Perkins,  
Liberal Arts

### Close-knit Community



I love the small campus atmosphere. It is easy to get to know people and be involved around campus because everything is close together and easily accessible.”

— Maddie Roberts,  
Liberal Arts

### Quality Education



I feel like I am receiving a quality education. All the instructors care about the students.”

— Nayeline Coronilla-Guerrero,  
Pre-Engineering

### A Variety of Degree & Certificate Programs



With 96 different programs, KCKCC can prepare you for your dream job, or transferring to a four year university.”

— Student Success Center

### Endless Student Resources



I enjoy having the small class sizes and the interaction we have with instructors; everyone is so approachable and friendly.”

— Liz Lee,  
Secondary Education

# DEGREE PROGRAMS

## CAREER PROGRAMS

- Accounting • 📄
- Addiction Counselor • ★ 📄
- Administrative Office Professional • ★ 📄
- Allied Health & Nursing/Practical Nursing ★ ◇
- Allied Health & Nursing/Registered Nurse • ◇
- Audio Engineering •
- Auto Collision Repair ★ +
- Automotive Technology ★ +
- Biomanufacturing ★
- Building Engineering & Maintenance Technology ★ +
- Business Administration • 📄
- Commercial & Residential Equipment Technology ★ +
- Computer Engineering Technology – Web Emphasis • 📄
- Computer Software Technology/Technician • ★ 📄
- Computer Support Specialist ★ +
- Computer Systems Networking & Telecommunications Network Specialist ★
- Computer Systems Networking & Telecommunications • ★
- Computer Systems Networking & Telecommunications – Computer Specialist ★
- Construction Technology ★ +
- Corrections • ★ 📄
- Cosmetology ★ +
- Culinary Arts ★ +
- Customer Service ✨
- Cybersecurity
- Digital Imaging Design •
- Drafting CAD • 📄
- Early Childhood Education • ■ ★ 📄
- Electrical Technology ★ +
- Entrepreneurship ✨
- Fire Science/Firefighting • 📄
- Heating & Refrigeration ★ +
- Homeland Security ★
- LPN Paramedic/RRT to RN Bridge Program • ◇
- Machine Technology ★ +
- Marketing • ★ ✨ 📄
- Medical Assistant ★ ◇ +
- Mortuary Science • ◇
- Multimedia/Video Production ★ +
- Nail Technology ★ +
- Paralegal • 📄
- Paramedic • ◇
- Physical Therapist Assistant • ◇
- Police Science • ✨ ★ 📄
- Respiratory Therapist/ Respiratory Care Therapy •
- Technical Studies •
- Web Application & Design ★
- Welding Technology ★ +

## LIBERAL ARTS AND SCIENCES

- Biology ▶ ■
- Business ■
- Chemistry ▶ ■
- Computer Engineering Technology ■
- Economics ✨
- Education, Elementary ✨
- Education, Secondary ▶
- Environmental Studies ▶ ■
- Exercise Science ▶
- Forensic Chemistry ✨ ▶ ■
- History ✨
- Journalism ✨ ▶
- Music ✨
- Music Technology ▶
- Philosophy ✨
- Physics/Physical Science ▶ ■
- Political Science ✨
- Psychology ✨
- Sociology ✨
- Studio Arts ✨ ▶
- Theatre ✨
- Theatre Technology ▶

## PRE-PROFESSIONAL PROGRAMS

- Pre-Agriculture ▶ ■
- Pre-Allied Health & Nursing ■
- Pre-Chiropractic ▶ ■
- Pre-Clinical Lab Science ▶ ■
- Pre-Dental ▶ ■
- Pre-Engineering ▶ ■
- Pre-Exercise Science ■
- Pre-Law ✨
- Pre-Medical ▶ ■
- Pre-Nutrition ▶ ■
- Pre-Occupational Therapy ■
- Pre-Optometry ▶ ■
- Pre-Pharmacy ▶ ■
- Pre-Physical Therapy ■
- Pre-Public Administration ✨
- Pre-Radiologic Technology ■
- Pre-Respiratory Therapy ■
- Pre-Social Work ✨
- Pre-Sports Management ✨
- Pre-Veterinary ▶ ■

### KEY

- ✨ – Associate of Arts (transfer degree)
- – Associate of Applied Science
- ▶ – Associate of General Studies (transfer degree)
- ◇ – Selective Admission
- – Associate of Science (transfer degree)
- ★ – Certificate ✨ – Certificate of Completion
- + – KCKCC's Technical Education Center Location
- 📄 – 100% online 📄 – 50-90% online

*\*Pending final approval*

# COST OF ATTENDANCE

Affordable Cost. Endless Opportunity.

Kansas City Kansas Community College offers one of the most affordable tuition rates in the KC metro while maintaining a strong commitment to provide a high quality of education.

\$82	\$88	\$195	\$113	\$80
Wyandotte County per Credit Hour*	Kansas Resident & Online per Credit Hour.*	Out of State per Credit Hour.* **	Kansas City Metro per Credit Hour.*	High School Dual Enrollment/ Credit*

\*Students are also responsible for a \$22 per credit hour fee. High School students only pay \$7 per credit hour fee. TEC students pay a \$75 per course fee for select courses.

\*\* International Students rate is the same as the Out of State per credit hour cost.

## Financial Aid

There are numerous sources of financial aid — scholarships, grants, work study positions, and loans — to help fund your education. Fill out your FAFSA and visit [www.kckcc.edu/admissions/financial-aid/](http://www.kckcc.edu/admissions/financial-aid/) to learn more about KCKCC resources to fund your education.

70

Institutional  
Scholarships

28

Foundation  
Scholarships

## Academic Scholarship

Graduating high school seniors from our service areas of Wyandotte or Leavenworth counties with at least a 3.3 GPA and qualifying ACT and ACCUPLACER test score are eligible for our Honor’s Presidential Scholarship, which pays for tuition and fees up to 18 hours per semester.

## Foundation

Each semester the KCKCC Foundation awards scholarships in amounts ranging from \$250 to \$1500 per semester to selected applicants. Scholarships are awarded based on GPA, major, or residency criteria. There is one perfect for you!

“

I am able to not worry about paying for tuition and books because of scholarships and grants.”

— Carlos Tapia,  
Business Administration

## Performance Grants

Have a special talents in Art, Debate, Journalism, Music, Theatre/Drama or Athletics? Use your talent to earn money for school. Our Humanities and Athletic Divisions help hundreds of talented students each year pay for school, with grants ranging from partial tuition to full payment of tuition and fees.

## Affordable Payment Plan

Make college affordable by paying for tuition and fees over time. Tuition payment plans break down your tuition balance into affordable monthly payments. There’s no interest, payment options are flexible, setup fees are affordable, and it’s easy to enroll!



# STUDENT RESOURCES

At Kansas City Kansas Community College, we take pride when our students succeed.

We provide a number of resources to ensure that our students will not only have a positive experience while attending KCKCC, but that they will be successful in their future endeavors.

## STUDENT RESOURCES

### Learning Commons

Library, free tutoring, study rooms, and computers.

### Student Success Center

Advising, degree planning, and placement testing.

### TRIO

Academic support and guidance for qualifying first-generation college students, low-income students, or individuals with documented disabilities.

### Counseling and Advocacy Center

Provide services that help students overcome life challenges to achieve academic success and attain their educational goals.

### Student Access & Support Services

Accommodations to students with documented disabilities and assistance with study skills.

### Entrepreneurship & Workforce Development Center

Career exploration and job placement assistance.

### On-Campus Housing

Steps away from Main Campus and apartment-style housing.

### Wellness Center

Full fitness facilities, personal training, and nutrition counseling.

### Bookstore

Purchase books, school supplies, KCKCC gear and snacks.

Continued ►



### Vic and David's Blue Devil Deli

Stop by to get lunch or breakfast or sign up for a meal plan.

### U-pass

Be able to use RideKC buses with your KCKCC student ID.

### Military & Veterans Center

A designated space for military and Veterans, proving advising and guidance to students.

# EASY TRANSFER

## Transferring Made Easy.

Transferring to a four-year university can be confusing but with planning and support your obstacles can be dramatically decreased.

## KCKCC offers multiple tools to help you with transferring.

- ▶ Use the Degree-Audit feature of the WebAdvisor student portal to keep track of your progress toward graduation.
- ▶ KCKCC's Spring and Fall Transfer fairs help you meet with prospective university representatives.
- ▶ Visit area universities and colleges with the KCKCC Transfer club.



## Steps to a Successful Transfer

**Meet regularly with your KCKCC advisor to make sure you are on track with requirements for KCKCC graduation.**



**Research universities offering that degree. Consider such factors as costs, location, convenience of class schedule. Review websites for transfer guides or degree requirements.**



**Set up an appointment with an academic advisor at prospective school to discuss application process and to receive most updated information about credit transfers and the school.**



**Choose a university.**

# GET A LITTLE MORE

\$60K

Median annual earnings among full-time workers age 25–32, in 2012 dollars.

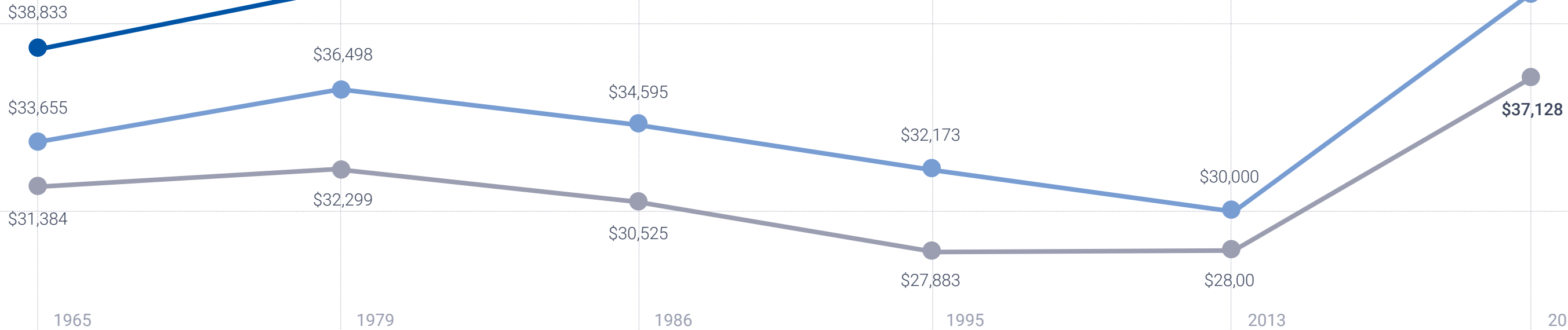
Whether you wish to earn a Certificate, an Associates Degree, or a Bachelor's Degree, KCKCC can get you started on the right path to earning more.

- Bachelor's degree or more
- Two-year degree/Some College
- High School Graduate

\$50K

\$40K

\$30K



61% more

College graduates with a Bachelor's degree or more earned 61% more income in 2017!

Source: Pew Research Center tabulations of the 2013, 1995, 1986, 1979, and 1965 March Current Population Survey (CPS) Integrated Public Use Micro Samples



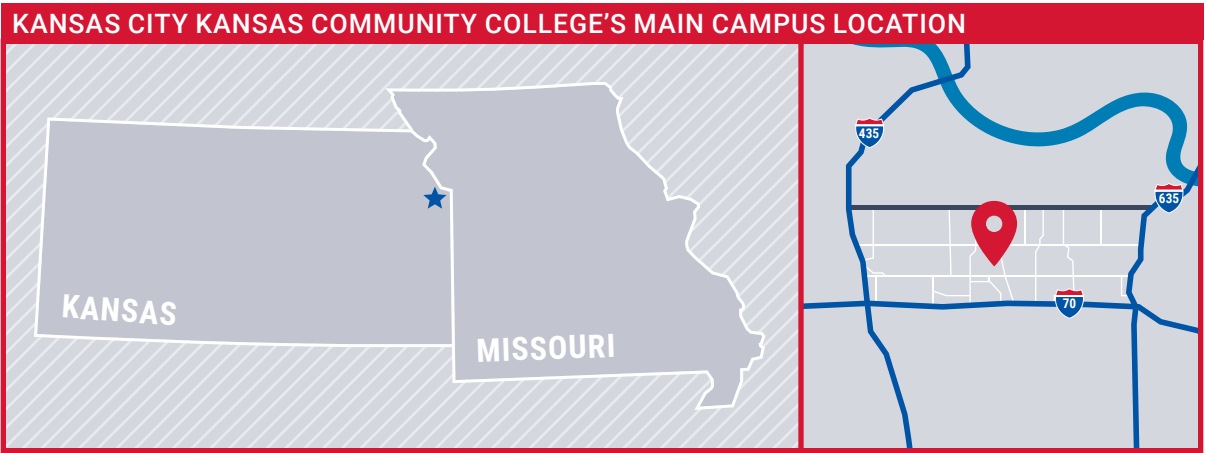
# LOCATION

Kansas City Kansas Community College is part of a thriving, urban community.

KCKCC's main campus is located 12 miles from downtown Kansas City, Missouri. KCKCC is minutes away from restaurants, shopping centers, parks, museums, and more. While studying at KCKCC you'll never run out of things to do.

Two additional locations. Endless learning opportunities.

KCKCC's **Thomas R. Burke Technical Education Center** in Kansas City, Kansas, and the **Pioneer Career Center** in Leavenworth, Kansas extend your learning opportunities. State-of-the-art classrooms let college and high school age students explore a variety of programs in a hands-on environment.



12

Miles from Downtown  
Kansas City, MO.

100+

Options for fun,  
food, and more.

“KCKCC is part of a thriving  
community in Kansas City.  
I love being a part of that.”

— Taylor Bolles  
Staff member



# CAMPUS COMMUNITY

KCKCC celebrates diversity among its students, faculty, and staff.

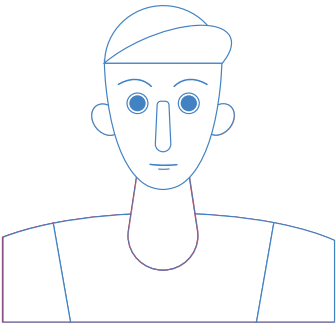
For Kansas City Kansas Community College, our local communities represent a microcosm of our larger society. The college has a unique role to play in the enhancement of our campus and the development of student leaders.

## Intercultural Center

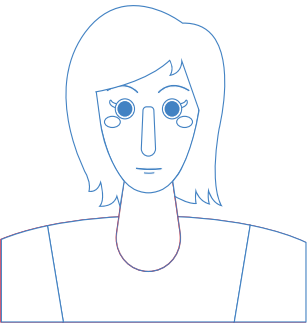
Designed to provide students, faculty, staff, and local communities with an enriched environment that celebrates the cultural contributions of our diverse populations. Stop by for complimentary beverages, good conversation, and diverse interactions.



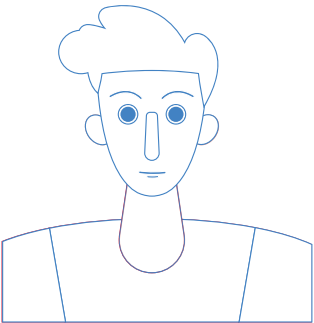
A college for everyone, in the most diverse county in Kansas.



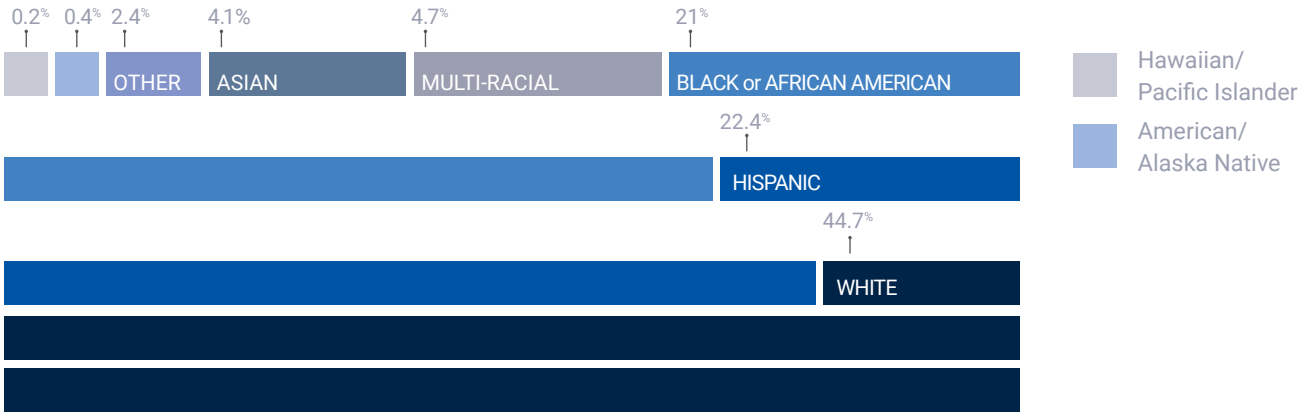
under 18  
19.6%



18-29  
56.1%



30-65+  
24.3%





# STUDENT LIFE

KCKCC has a plethora of opportunities for students to get involved in and outside of the classroom.

At KCKCC students can join one of our many clubs, join an intramural sports team, or go to free KCKCC theatre productions. Our on-campus game room is the perfect place to hang out between classes. Students can also participate in KCKCC traditions, like the Candlelighting Program.

## STUDENT ORGANIZATIONS

African American Student Union (TASSU)

The American Association of University Women (AAUW)

Athletic Activities

Audio Engineering Student Society

Blue Crew

Campus Forum

Catholic Students of Kansas City  
Kansas Community College Club

Christian Student Union/Campus  
Crusade for Christ (CRU)

College Transfer Club

Drama Club

Early Childhood Professionals

Economics Club

Enactus (SIFE)

Fringe Benefits of Education (FBOE)

Forensics Club

Gamer Club

International Student Organization

KCKCC Parent Council

Men Against Sexual Violence (MASV)

Music Club

Naturally Designed

Out, Questioning and Straight Diversity Club

Phi Theta Kappa Honor Society

Ralph Bunche Society

Sigma Phi Sigma

Spirit Squad

Student Art Society

Students for Global Peace

Student Debate Association

Student Nurse Association

Student Organization of Latinos (SOL)

Student Senate

KNEA Student Chapter

Therapy Club



Three Intramural Sports are offered each semester at KCKCC. This is a wonderful opportunity for students to get involved outside of the classroom. The intramurals vary from semester to semester offering a variety of opportunities for involvement.

“  
Students have a vast amount of opportunities to get involved outside of the classroom, there is something going on on-campus every day.”

— Gary Bradley-Lopez  
Former Student Body President

# ATHLETICS

## Let's go Blue Devils!

Athletes at Kansas City Kansas Community College excel both on the playing fields and in the classroom. Whether you are a student athlete or a sports fan, Blue Devil pride runs deep!

Make sure you don't miss the action. Students get in sporting events for FREE.

## Top Tier Facilities

Our soccer fields were part of a \$4 million renovation opened in September 2013, Kansas City Kansas Community College's soccer field rivals some of the best in the world.

Opened March 16, 2013, the baseball complex at Kansas City Kansas Community College ranks right with the nation's best facilities.

Our Field House is one of the busiest facilities on the Kansas City Kansas Community College campus. The 3,500-seat Field House is not only the home to the Blue Devil basketball and volleyball teams, it is the focal point of numerous activities and events throughout the year.

### MEN'S SPORTS

Baseball  
Basketball  
Golf  
Soccer

### WOMEN'S SPORTS

Basketball  
Soccer  
Softball  
Volleyball

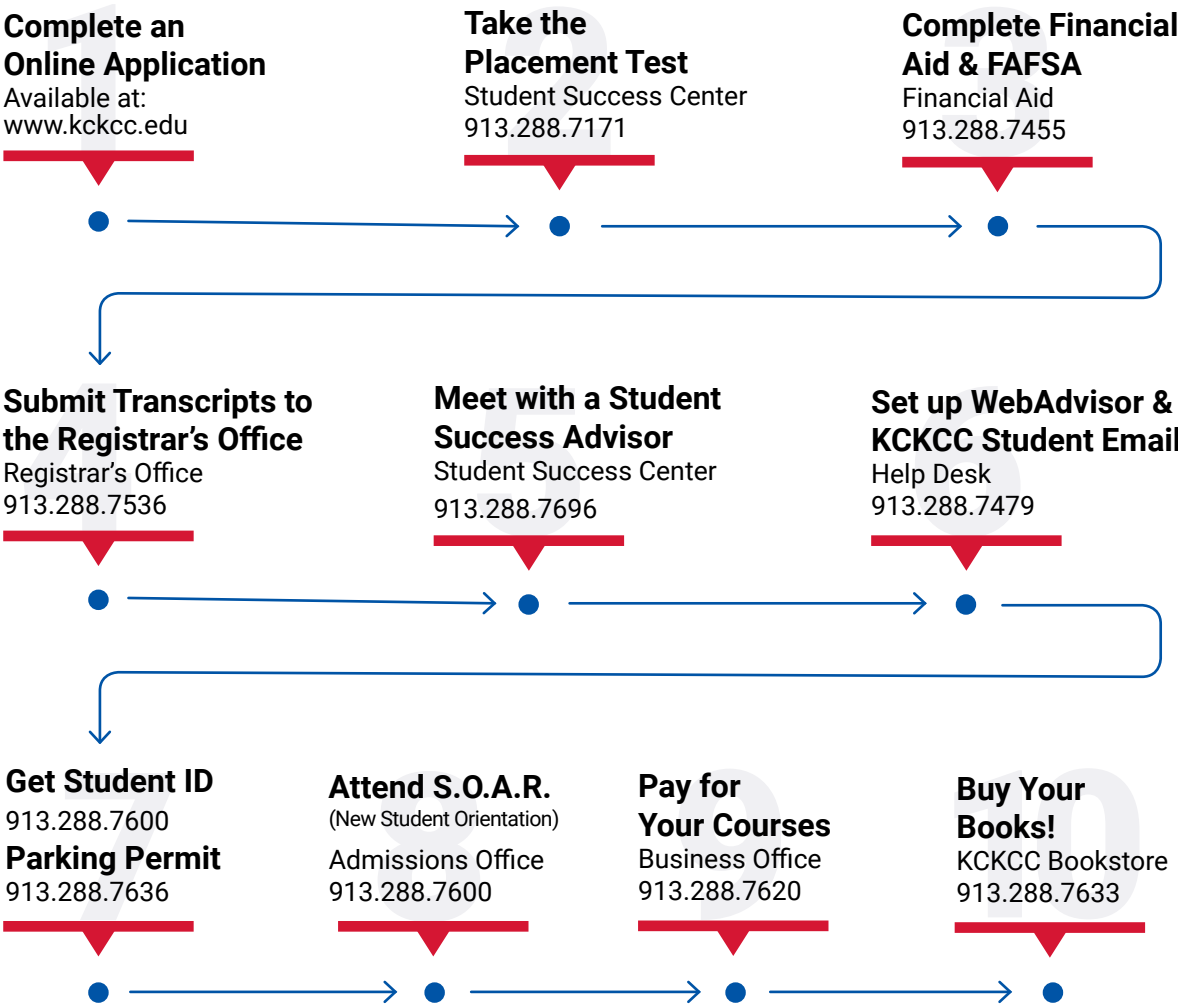


KCKCC is a part of the National Junior College Athletic Association — NJCAA

KCKCC is a part of the Kansas Jayhawk Community College Conference

## 2016 NJCAA DII Women's Basketball National Champions

# SMOOTH ENROLLMENT STEPS



# ADMISSIONS OFFICE

**Admissions Office**

913.288.7600  
admiss@kckcc.edu

**Yamel Camcho Clay**

*Admissions Information Specialist*  
913.288.7688  
bcamachoclay@kckcc.edu

**Emily Brattin**

*International Student Services Coordinator*  
913.288.7601  
ebrattin@kckcc.edu

**Mary Kobe-Peterson**

*High School Partnership Coordinator*  
913.288.7324  
mkobe@kckcc.edu

**Lindsey Bruns**

*High School Partnership Admissions Specialist*  
913.288.7140  
lbruns@kckcc.edu

**Sandra Winkfield**

*Technical Assistant*  
913.288.7530  
swinkfield@kckcc.edu

**Jaymie Davis**

*Admissions Recruiter*  
913.288.7631  
jstokes@kckcc.edu

**Raven Morris**

*Admissions Recruiter*  
913.288.7214  
rmorris@kckcc.edu

**Brooke Fleener**

*Admissions Recruiter*  
913.288.7614  
bfleener@kckcc.edu

**Jeremiah McCluney**

*Operations Coordinator*  
913.288.7602  
jmcccluney@kckcc.edu

**Tina Church Lewandowski**

*Director of Admissions & First Year Experience*  
913.288.7201  
tchurch@kckcc.edu

**Anita Randall**

*Admissions TEC Technical Assistant*  
913.288.7806  
arandall@kckcc.edu



## CONTACT US

## MAIN CAMPUS

7250 State Avenue  
Kansas City, KS 66112

☎ 913.334.1100

**DR. THOMAS R. BURKE**  
**TECHNICAL EDUCATION CENTER**

6565 State Avenue  
Kansas City, KS 66102

📞 913.288.7800

## PIONEER CAREER CENTER

📍 1901 Spruce Street  
Leavenworth, KS 66048

📞 913.288.7750

<b>913.288.7600</b>	Admissions Office
<b>913.288.7674</b>	Arts, Humanities & Communications
<b>913.288.7633</b>	Bookstore
<b>913.288.7213</b>	Facility Services
<b>913.288.7620</b>	Business Office
<b>913.288.7499</b>	Center for Teaching Excellence
<b>913.288.7660</b>	Continuing Education
<b>913.288.7640</b>	Counseling & Advocacy Center
<b>913.288.7880</b>	Entrepreneurship & Workforce Center
<b>913.288.7697</b>	Financial Aid
<b>913.288.7174</b>	Health Professions

<b>913.288.7243</b>	Human Resources
<b>913.288.7132</b>	Information Services
<b>913.288.7650</b>	Learning Commons
<b>913.288.7664</b>	Student Accessibility & Support Services
<b>913.288.7592</b>	Military Veterans Center
<b>913.288.7518</b>	Math, Science, Business & Computer Technology
<b>913.288.7265</b>	Online Education
<b>913.288.7110</b>	Registrar
<b>913.288.7696</b>	Student Success Center
<b>913.288.7623</b>	Transcript Services
<b>913.288.7610</b>	Wellness Center

# NOTES

An abstract geometric pattern featuring a series of horizontal lines. The pattern includes various shapes such as rectangles, circles, and triangles, some of which are filled with a light gray color. The overall design is minimalist and modern.

## MAIN CAMPUS

📍 7250 State Avenue  
Kansas City, KS 66112

📞 913.334.1100

## DR. THOMAS R. BURKE TECHNICAL EDUCATION CENTER

📍 6565 State Avenue  
Kansas City, KS 66102

📞 913.288.7800

## PIONEER CAREER CENTER

📍 1901 Spruce Street  
Leavenworth, KS 66048

📞 913.288.7750

**[WWW.KCKCC.EDU](http://WWW.KCKCC.EDU)**



[facebook.com/KCKCCAdmissions](https://facebook.com/KCKCCAdmissions)



[twitter.com/KansasCityKSCC](https://twitter.com/KansasCityKSCC)

### NON-DISCRIMINATION STATEMENT

Kansas City Kansas Community College is committed to nondiscrimination on the basis of race, color, ethnic or national origin, sex, religion, age, disability, veteran status, or other non-merit reasons, in admissions, educational programs or activities and employment, including employment of disabled veterans and veterans of the Vietnam Era, as required by applicable laws and regulations. Responsibility for coordination of compliance efforts and receipt of inquiries concerning Title VI of the Civil Rights Act of 1964, Title IX of the Education Amendments of 1972, Section 504 of the Rehabilitation Act of 1973, the Age Discrimination Act of 1975, and the Americans With Disabilities Act of 1990, has been delegated to the Human Resources Department, Kansas City Kansas Community College, 7250 State Avenue, Kansas City, KS 66112.

Gainful employment information can be found on our website at: <http://kckcc.edu/costs-aid/financial-aid/gainful-employment>.