



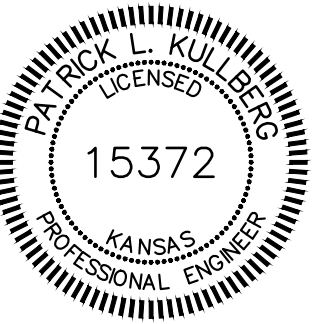
11031 Strang Line
enexa, Kansas 66215
P 913-888-7800
F 913-888-4868

NOTICE:
McClure Engineering Company waives any and all responsibility and liability for problems which arise from failure to follow these Plans, Specifications, and the engineering intent they convey, or for problems which arise from failure to obtain and/or follow the engineers guidance with respect to any errors, omissions, inconsistencies, ambiguities, or conflicts which are alleged.

COPYRIGHT:
Copyright and property rights in
these documents are expressly
reserved by McClure Engineering
Company.

No reproductions, changes, or copies in any manner shall be made without obtaining prior written consent from McClure Engineering Company.

KANSAS CERTIFICATE OF
AUTHORITY NO. E2723
EXPIRES: DECEMBER 31, 2025



KCKCC
PERFORMING ARTS CENTER
STORMWATER
IMPROVEMENTS

EXISTING CONDITIONS PLAN

CITY OF KANSAS CITY, KANSAS
PROJECT NO. 2024006665-010
ISSUE DATE: 9-05-2025

REVISIONS

ENGINEER
PLK

CHECKED BY
TMS

DRAWN BY
BGL

FIELD BOOK NO. _____

SHEET NO.

C-1.00

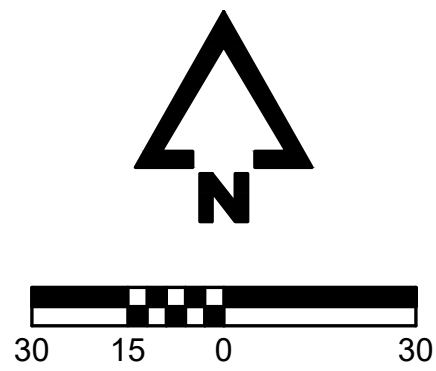


PROJECT BENCHMARK TABLE				
BM#	NORTHING	EASTING	ELEV.	DESCRIPTION
250	609065.25'	11642070.83'	938.38'	SQUARE CUT
251	609129.33'	11642624.11'	938.05'	SE BOLT ON TOP OF FIRE HYDRANT CAP

PROJECT CONTROL POINTS TABLE				
CP#	NORTHING	EASTING	ELEV.	DESCRIPTION
200	609127.12'	11642468.92'	935.39'	MAG NAIL
201	609025.18'	11642199.77'	928.14'	MAG NAIL
202	608817.19'	11642340.36'	922.77'	60D NAIL
203	609482.58'	11642087.15'	950.26'	1/2" IRON REBAR W/MEC CAP
204	608923.45'	11642397.09'	933.91'	1/2" IRON REBAR W/MEC CAP
205	6088923.49'	11642762.80'	918.29'	MAG NAIL IN CURB

HORIZONTAL DATUM: KANSAS REGIONAL
COORDINATE SYSTEM - ZONE 11

VERTICAL DATUM: NAVD88
GEOID18



LEGEND

• WM	WATER METER
FDC	FIRE DEPARTMENT CONNECTION
⊗	FIRE HYDRANT
Φ WV	WATERLINE VALVE
— PL —	PROPERTY LINE
— W —	WATER LINE
— SAN —	SANITARY LINE (PROP)
— SAN —	SANITARY SEWER (EXIST)
— STR —	STORM LINE
— UP —	UNDERGROUND ELEC.
— G —	GAS
— FO —	FIBER OPTIC SERVICE LINE
— T —	UNDERGROUND TELEPHONE
— DW —	DOMESTIC WATERLINE
— FPL —	FIRE PROTECTION WATERLINE
— RDN —	STORM ROOF DRAIN LINE

RESTORATION NOTE:
ALL OFF-SITE AREAS DISTURBED DURING CONSTRUCTION SHALL BE RESTORED TO CONDITIONS EQUAL TO OR BETTER THAN THOSE EXISTING PRIOR TO ENTRY. RESTORATION SHALL BE COMPLETED AND ACCEPTED BY OWNER PRIOR TO ACCEPTANCE OF THE PROJECT.

EXISTING SIDEWALK & DRIVE RESTORATION NOTE:
ALL ASPHALT PAVEMENT AND CONCRETE SIDEWALK TO BE REMOVED FOR INSTALLATION OF THE STORM SEWER SHALL BE SAW-CUT FULL DEPTH AND REPLACED. ANY CURB, SIDEWALK, PAVEMENT, IRRIGATION SYSTEMS, ETC., DAMAGED DURING CONSTRUCTION SHALL BE REPLACED TO AN EQUAL CONDITION OR BETTER THAN THOSE EXISTING PRIOR TO CONSTRUCTION AT THE CONTRACTORS EXPENSE. RESTORATION SHALL BE COMPLETED AND ACCEPTED BY THE OWNER PRIOR TO ACCEPTANCE OF THE PROJECT.

CONTRACTOR SHALL INSTALL 10'x12' STONE RIP-RAP (139 S.Y.) (15' MIN) (SE).

STA. 1+19.58, LINE 1
INSTALL 42" HDPE END SECTION W/CONC TOEWALL (SE) AND INSTALL 103.84 L.F. 42" HDPE STORM SEWER PIPE (NW). BEGIN LINE 1.

STA. 2+23.42, LINE 1
CONTRACTOR SHALL INSTALL 6'x4' JUNCTION BOX AND INSTALL 183.00 L.F. 42" HDPE STORM SEWER PIPE (W).

INSTALL 20 LIN. FT. REINFORCED CONC. ENCASUREMENT ON THE EXISTING SANITARY SEWER MAIN: 10' NORTH AND 10' SOUTH CENTERED ON THE STORM CROSSING 15' (N) OF THE EXISTING MANHOLE. FL EXISTING 8" SANITARY MAIN = 911.48
FL PROPOSED 42" STORM SEWER PIPE = 912.65

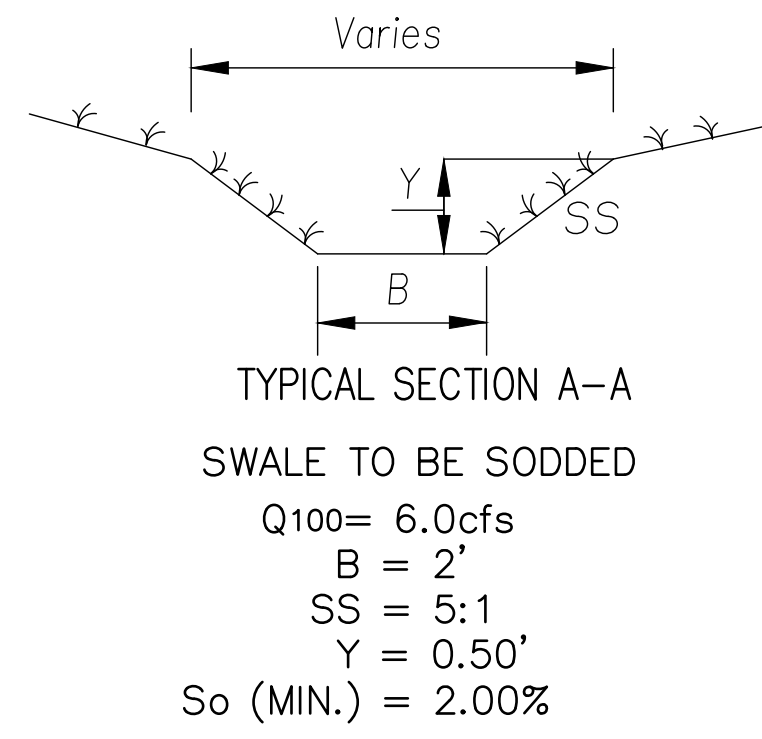
STA. 4+06.42, LINE 1
CONTRACTOR SHALL REMOVE EXISTING AREA INLET AND INSTALL 6'x4' GRATE INLET W/DBL. GRATE AND REMOVE THE EXISTING 24" STORM SEWER PIPE (W). INSTALL 95.03 L.F. 42" HDPE STORM SEWER PIPE (W).

STA. 5+01.45, LINE 1
CONTRACTOR SHALL REMOVE EXISTING GRATE INLET AND INSTALL 9'x5' GRATE INLET W/DBL. GRATE AND CONNECT EXISTING 24" STORM SEWER PIPE (W) AND EXISTING 3" STORM PIPE (SW). INSTALL 122.58 L.F. 36" HDPE STORM SEWER PIPE (NW-LINE 1). INSTALL 44.19 L.F. 24" HDPE STORM SEWER PIPE (S-LINE 2). INSTALL 122.58 L.F. 36" HDPE STORM SEWER PIPE (NW-LINE 1). BEGIN LINE 2 AND LINE 3.

STA. 6+74.40, LINE 1
CONTRACTOR SHALL SAW-CUT EXISTING PAVEMENT FOR INSTALLATION OF STORM SEWER PIPE. THERE SHALL BE ONE LANE OPEN TO TRAFFIC AT ALL TIMES. CONTRACTOR SHALL REPLACE PAVEMENT REMOVED AND ANY PAVEMENT DAMAGED DURING CONSTRUCTION.

PROJECT BENCHMARK TABLE				
BM#	NORTHING	EASTING	ELEV.	DESCRIPTION
250	609065.25	11642070.83	938.38	SQUARE CUT
251	609129.33	11642624.11	938.05	SE BOLT ON TOP OF FIRE HYDRANT CAP

PROJECT CONTROL POINTS TABLE				
CP#	NORTHING	EASTING	ELEV.	DESCRIPTION
200	609127.12	11642468.92	935.39	MAG NAIL
201	609025.18	11642199.77	928.14	MAG NAIL
202	608917.19	11642340.36	922.77	60D NAIL
203	609482.58	11642087.15	950.26	1/2" IRON REBAR W/MEC CAP
204	609123.52	11642397.09	933.91	1/2" IRON REBAR W/MEC CAP
205	608923.49	11642762.80	918.29	MAG NAIL IN CURB



NOTE:
ALL AREAS DISTURBED DURING CONSTRUCTION SHALL BE SEEDED. ALL SWALE AREAS SHALL BE SODDED.



making lives better.

11031 Strang Line
Lenexa, Kansas 66215
P 913-888-7800
F 913-888-4868

NOTICE:
McClure Engineering Company waives any and all responsibility and liability for problems which arise from failure to follow these Plans, Specifications, and the engineering intent they convey, or for problems which arise from failure to obtain and/or follow the engineers guidance with respect to any errors, omissions, inconsistencies, ambiguities, or conflicts which are alleged.

COPYRIGHT:
Copyright and property rights in these documents are expressly reserved by McClure Engineering Company.
No reproductions, changes, or copies in any manner shall be made without obtaining prior written consent from McClure Engineering Company.

KANSAS CERTIFICATE OF AUTHORITY NO. E2723
EXPIRES: DECEMBER 31, 2025



KCKCC
PERFORMING ARTS CENTER
STORMWATER
IMPROVEMENTS

**STORM SEWER
PLAN & PROFILE**

CITY OF KANSAS CITY, KANSAS
PROJECT NO. 2024006665-010
ISSUE DATE: 9-05-2025
REVISIONS

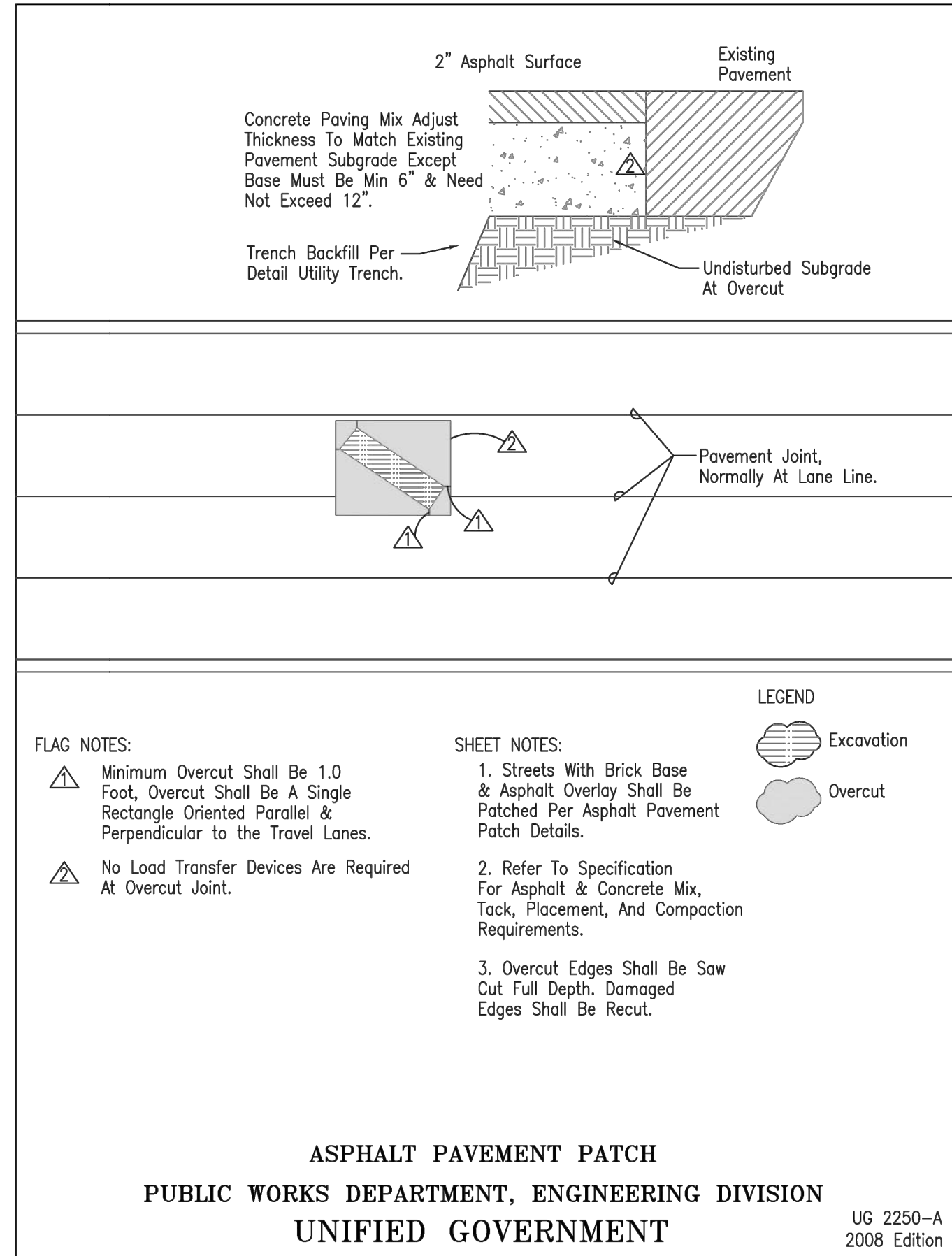
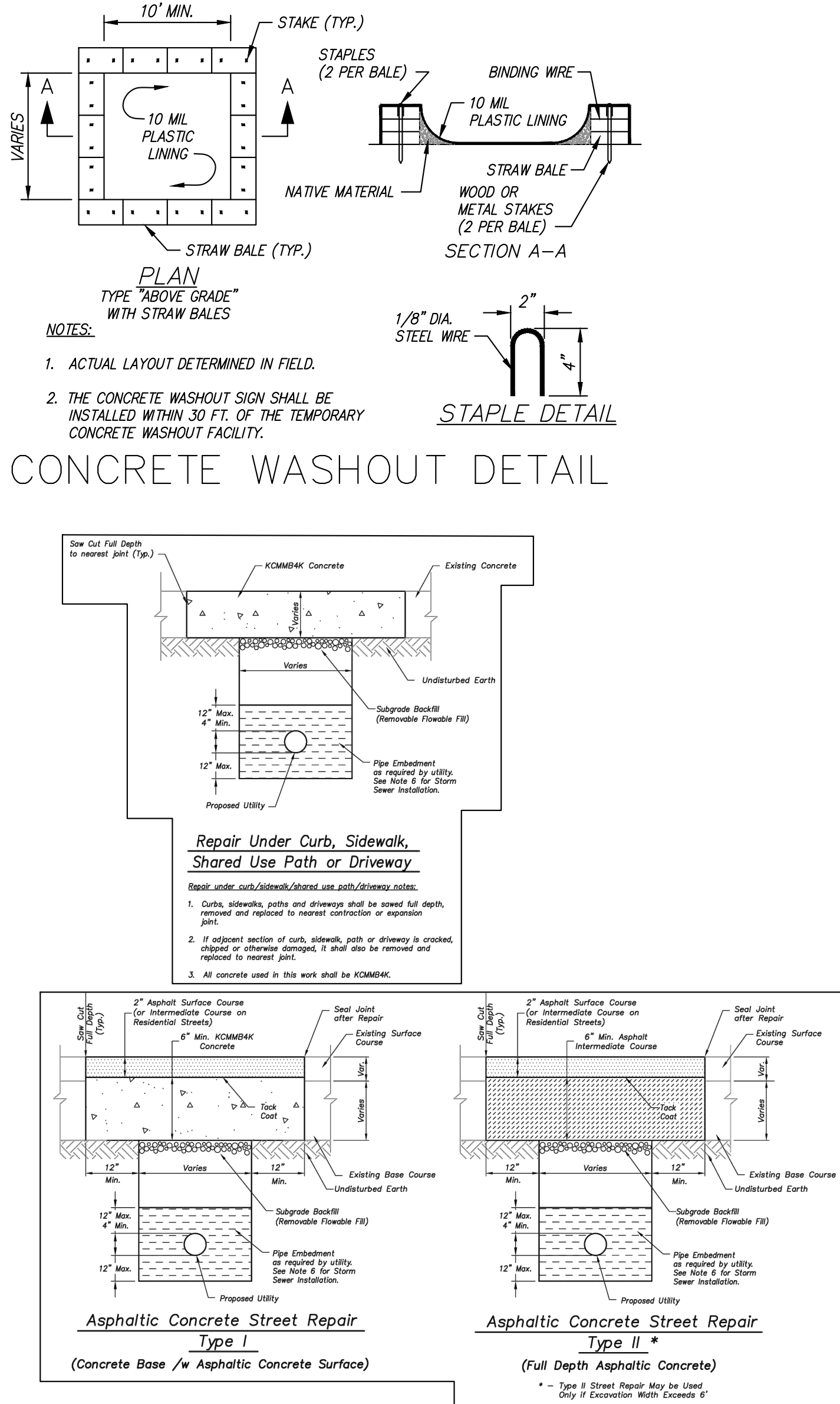
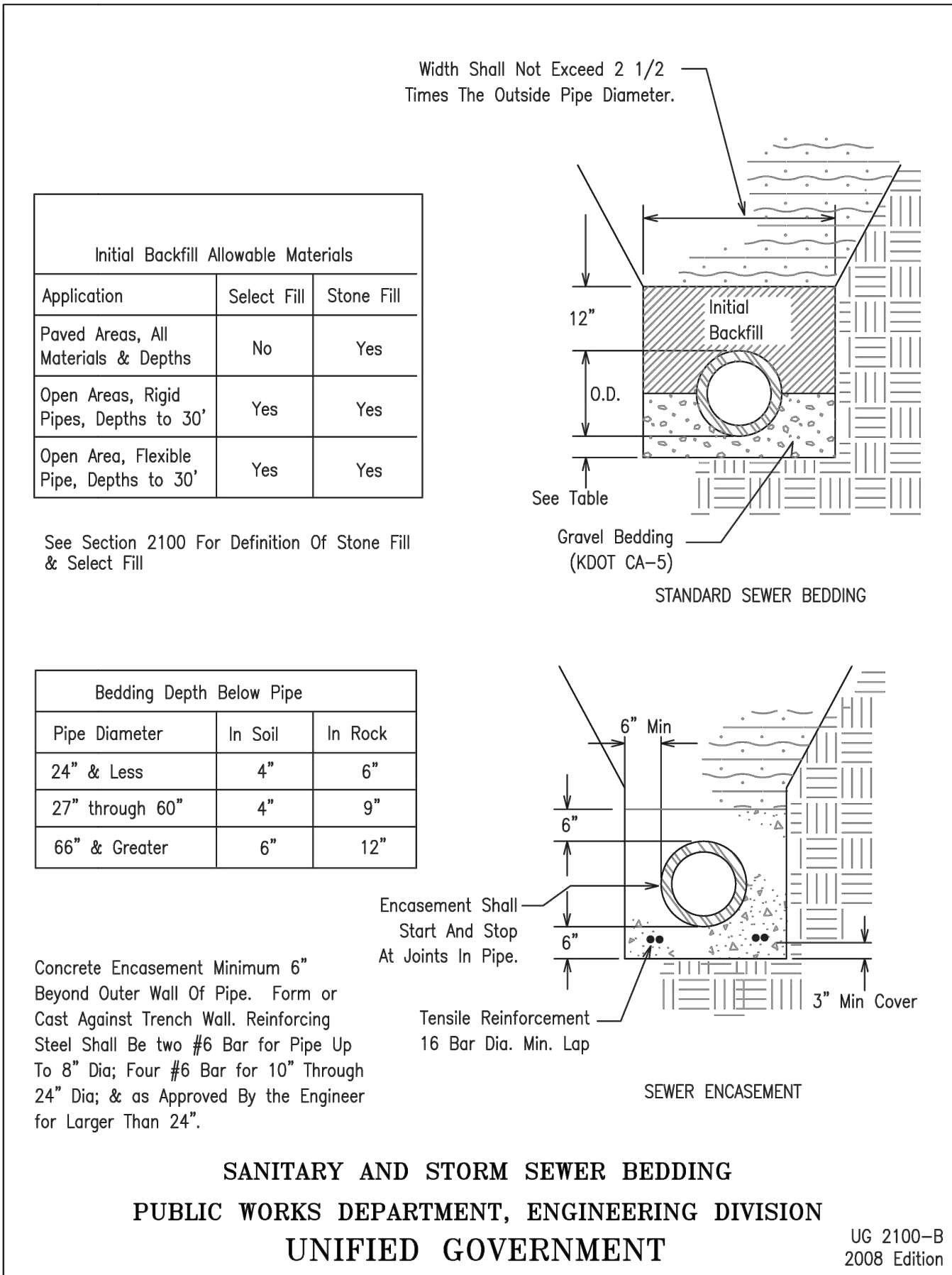
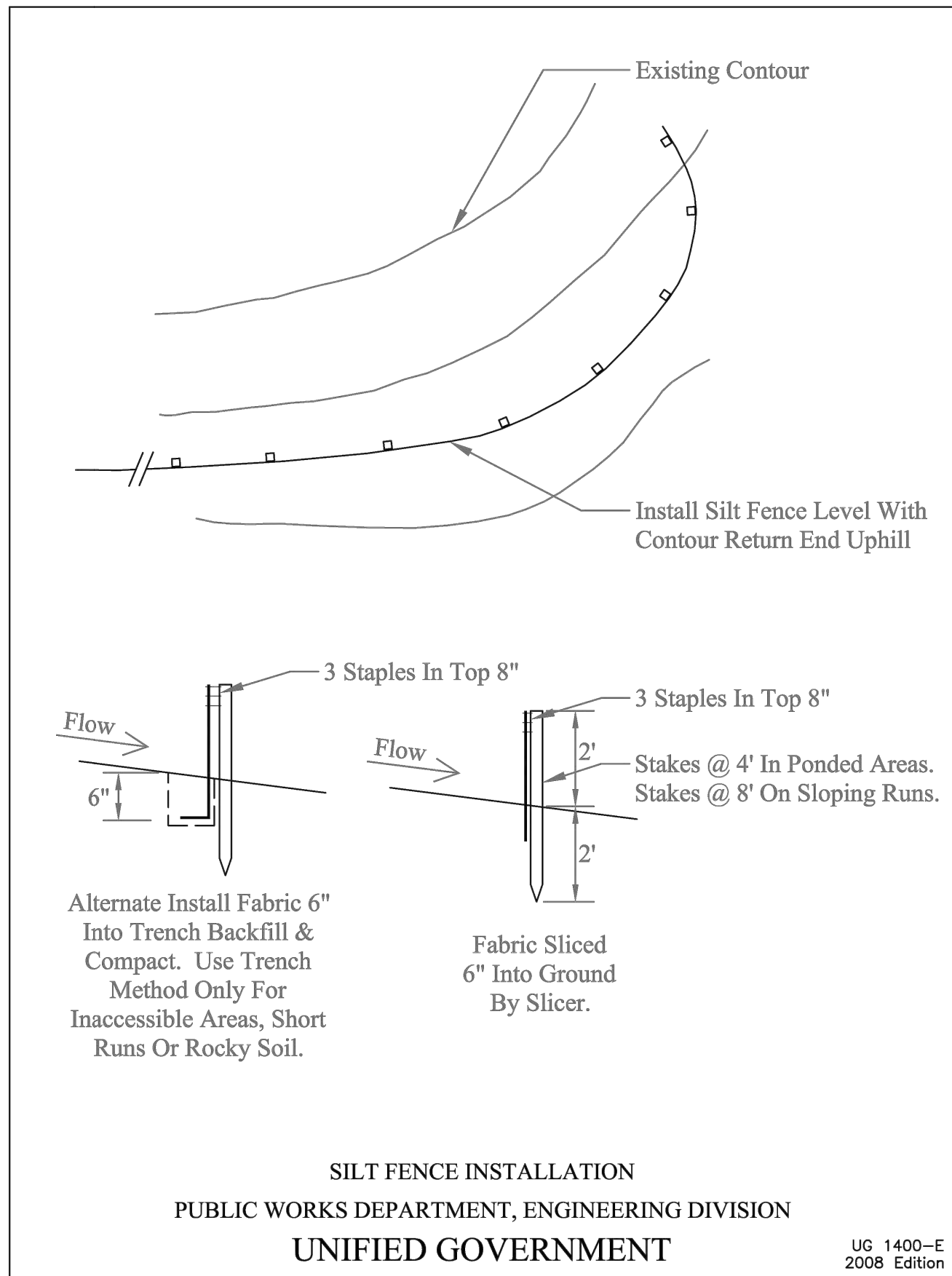
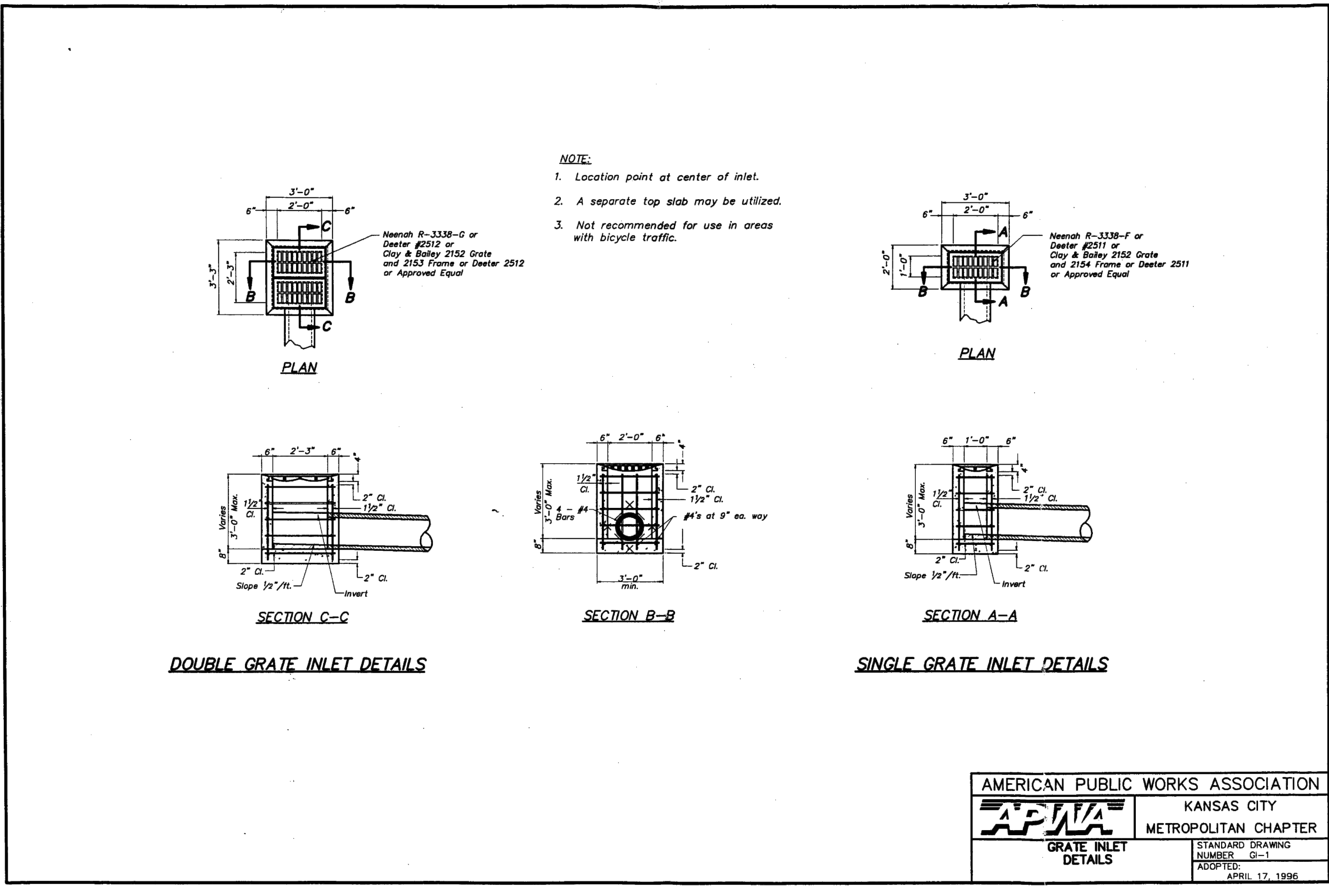
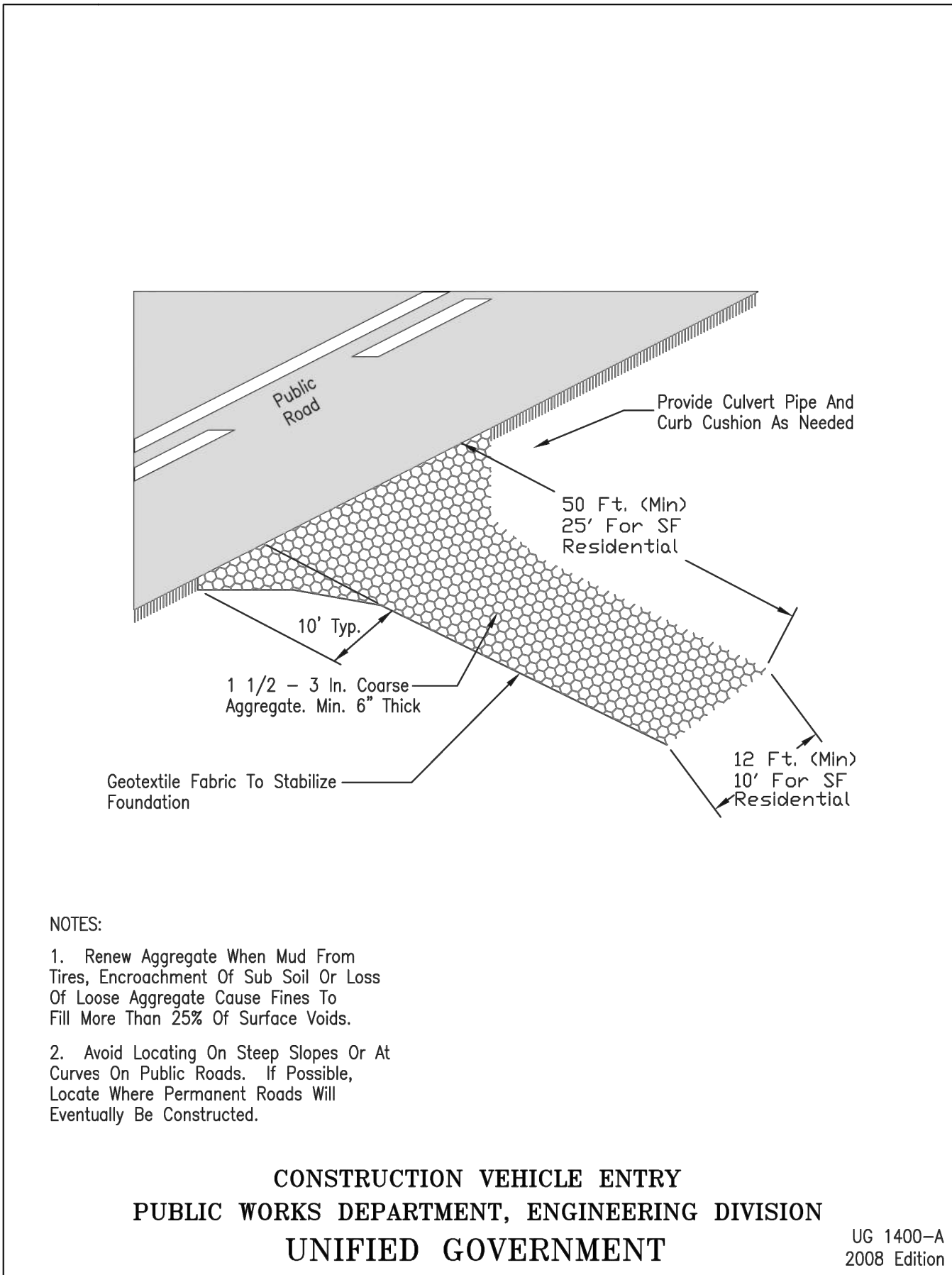
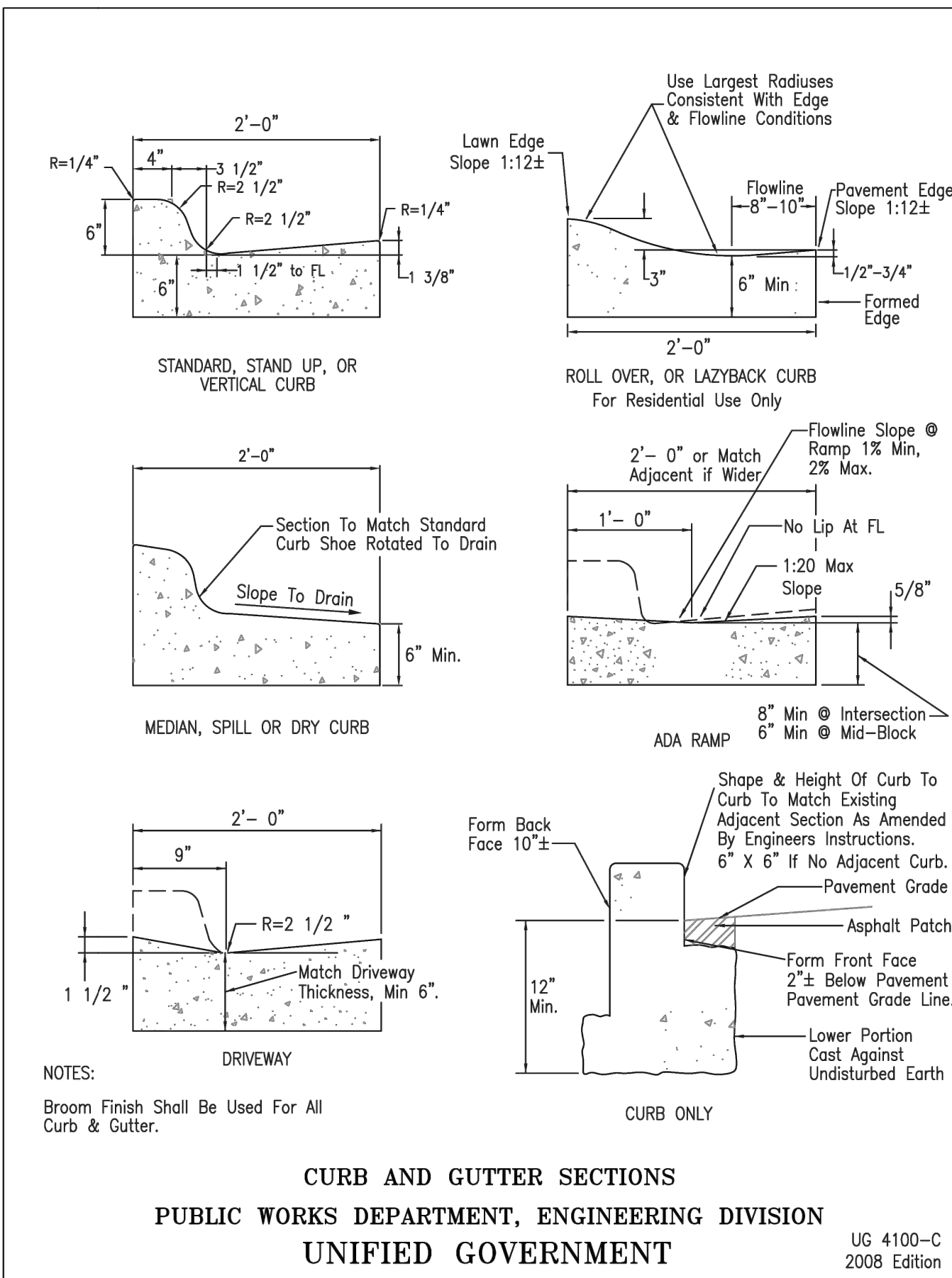
ENGINEER
PLK

DRAWN BY
BGL

CHECKED BY
TMS

FIELD BOOK NO.

SHEET NO.
C-1.01



making lives better.

11031 Strang Line
Lenexa, Kansas 66215
P 913-888-7800
F 913-888-4868

NOTICE:
McClure Engineering Company waives any and all responsibility and liability for problems which arise from failure to follow these Plans, Specifications, and the engineering intent they convey, or for problems which arise from failure to obtain and/or follow the engineers guidance with respect to any errors, omissions, inconsistencies, ambiguities, or conflicts which are alleged.

COPYRIGHT:
Copyright and property rights in these documents are expressly reserved by McClure Engineering Company.
No reproductions, changes, or copies in any manner shall be made without obtaining prior written consent from McClure Engineering Company.

KANSAS CERTIFICATE OF AUTHORITY NO. E2723
EXPIRES: DECEMBER 31, 2025

KCKCC
PERFORMING ARTS CENTER
STORMWATER
IMPROVEMENTS

**TYPICAL SITE
DETAILS**

CITY OF KANSAS CITY, KANSAS
PROJECT NO. 2024006665-010
ISSUE DATE: 9-05-2025

REVISIONS

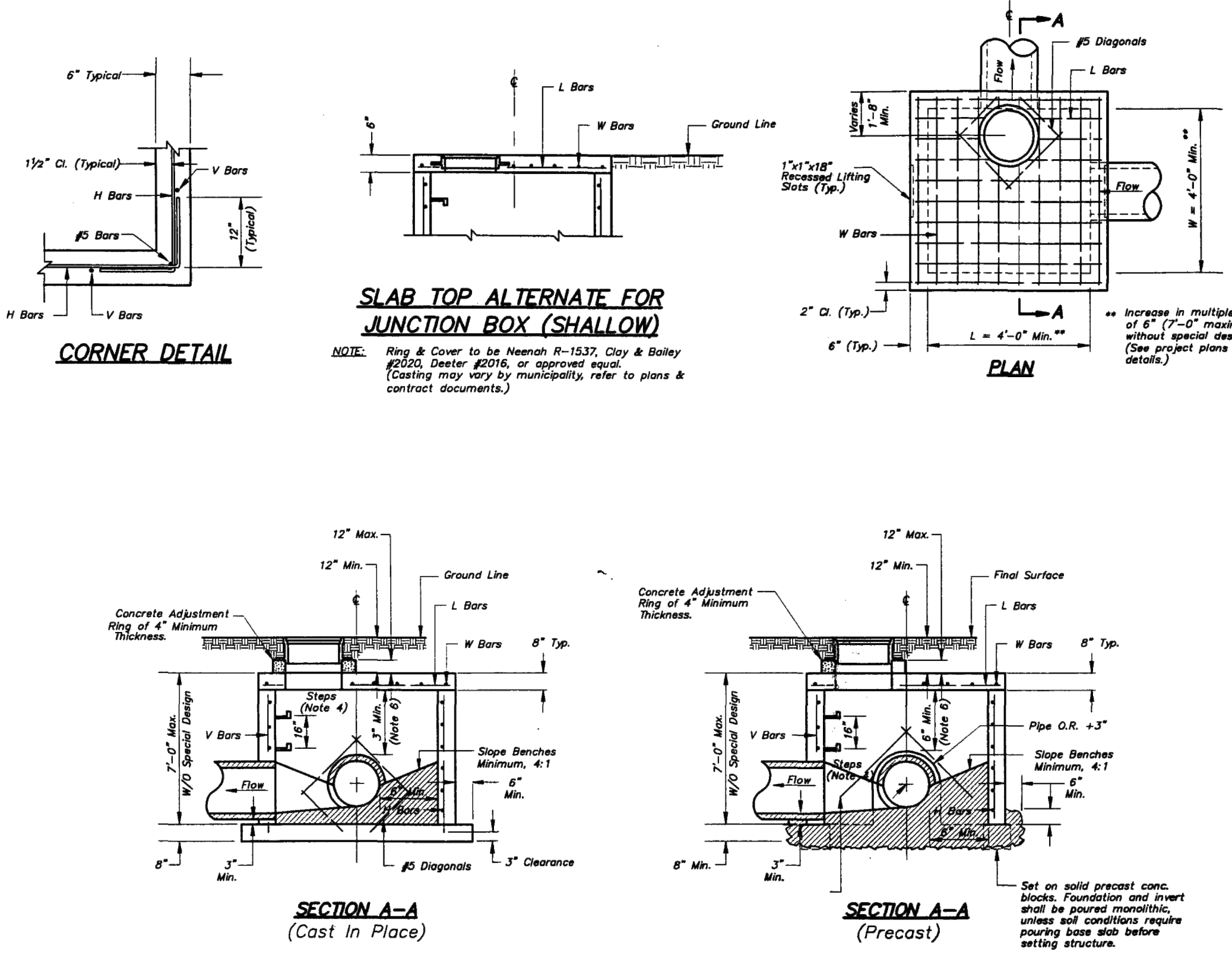
ENGINEER
PLK

DRAWN BY
BGL

CHECKED BY
TMS

FIELD BOOK NO.

SHEET NO.
C-1.03



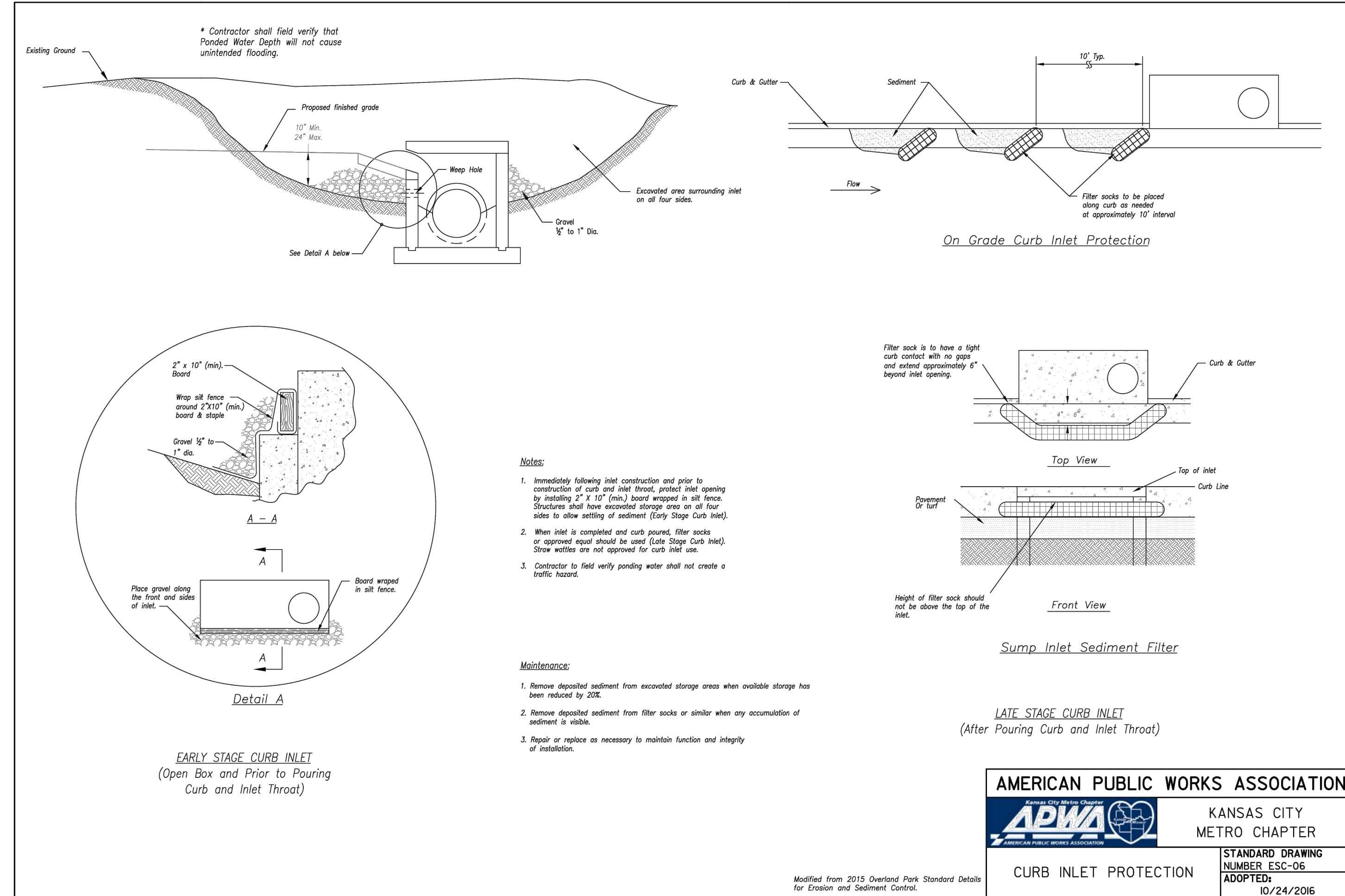
GENERAL NOTES:

1. Locate ring and cover over outlet.
2. All work and materials shall conform to Section 2600 APWA.
3. Use 3/4" Chamfer strip or 1/2" R edger tool on all exposed concrete corners.
4. Steps required at 16" O.C. when depth from top of casting to invert exceeds 4'.
5. Bonnets will not be allowed to project through the Corners of the structure and the minimum distance between bonnets is 6" with 1 corner bar.
6. The minimum reinforcing shall be 1 H-Bar over a cast-in place pipe and 2 H-Bars over a precast bonnet.
7. Limit opening height to 6" with No. 5 galvanized bars extending to corner rebars.
8. Show field inlet orientation on plans plus number and size of openings locating point at center of structure.
9. O.R. = one half outside pipe diameter (O.D.).
10. Reinforcing of covers in streets require special design.
11. Ring & Cover to be Neenah R-1736, Clay & Bailey #2008, Dealer #1315, or approved equal. (Casting may vary by municipality, refer to plans & contract documents.)

REINFORCING

BAR	BAR SIZE	SPACING (IN)
H	4	12
V	4	12
L	5	6
W	5	6

AMERICAN PUBLIC WORKS ASSOCIATION
KANSAS CITY METROPOLITAN CHAPTER
JUNCTION BOX DETAILS
STANDARD DRAWING NUMBER JS - 1
ADOPTED: APRIL 17, 1996



McCLURE™
 making lives better.

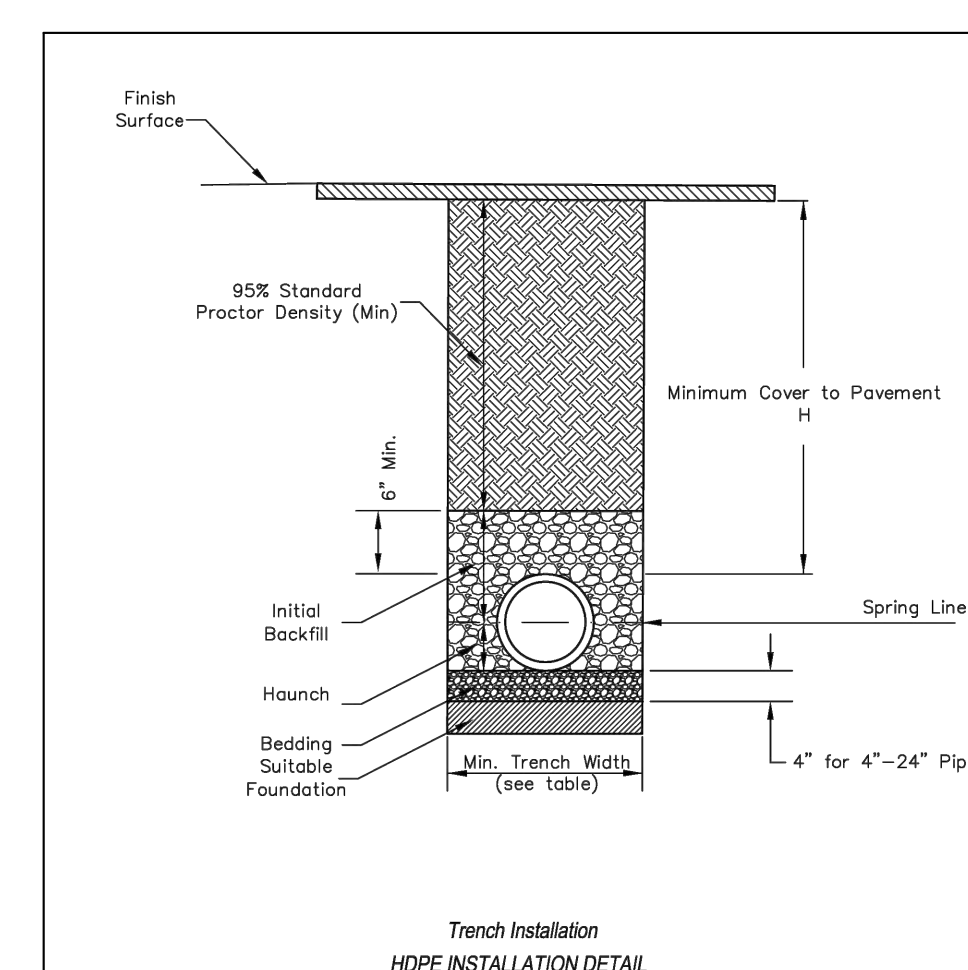
11031 Strang Line
 Lenexa, Kansas 66215
 P 913-888-7800
 F 913-888-4868

NOTICE:
 McClure Engineering Company waives any and all responsibility and liability for problems which arise from failure to follow these Plans, Specifications, and the engineering intent they convey, or for problems which arise from failure to obtain and/or follow the engineers guidance with respect to any errors, omissions, inconsistencies, ambiguities, or conflicts which are alleged.

COPYRIGHT:
 Copyright and property rights in these documents are expressly reserved by McClure Engineering Company.
 No reproductions, changes, or copies in any manner shall be made without obtaining prior written consent from McClure Engineering Company.

KANSAS CERTIFICATE OF AUTHORITY NO. E2723
 EXPIRES: DECEMBER 31, 2025

PAUL R. KULLBERG
 LICENSED PROFESSIONAL ENGINEER
 15372
 KANSAS



6. FOUNDATION: Where the trench bottom is unstable, the contractor shall excavate to a depth required by the engineer and replace with suitable material as specified by the engineer. As an alternative and at the discretion of the design engineer, the trench bottom may be stabilized using Geotextile material.

7. BEDDING: Suitable material shall be ASTM Class IA or ASTM Class IB, KDOT PB-2 or KDOT PB-3 or similar crushed aggregate product as approved. The contractor shall provide documentation for material specification to engineer, unless otherwise noted by the engineer. Minimum bedding thickness shall be 4" for 4"-24" diameter pipe; 6" for 30"-60" diameter pipe.

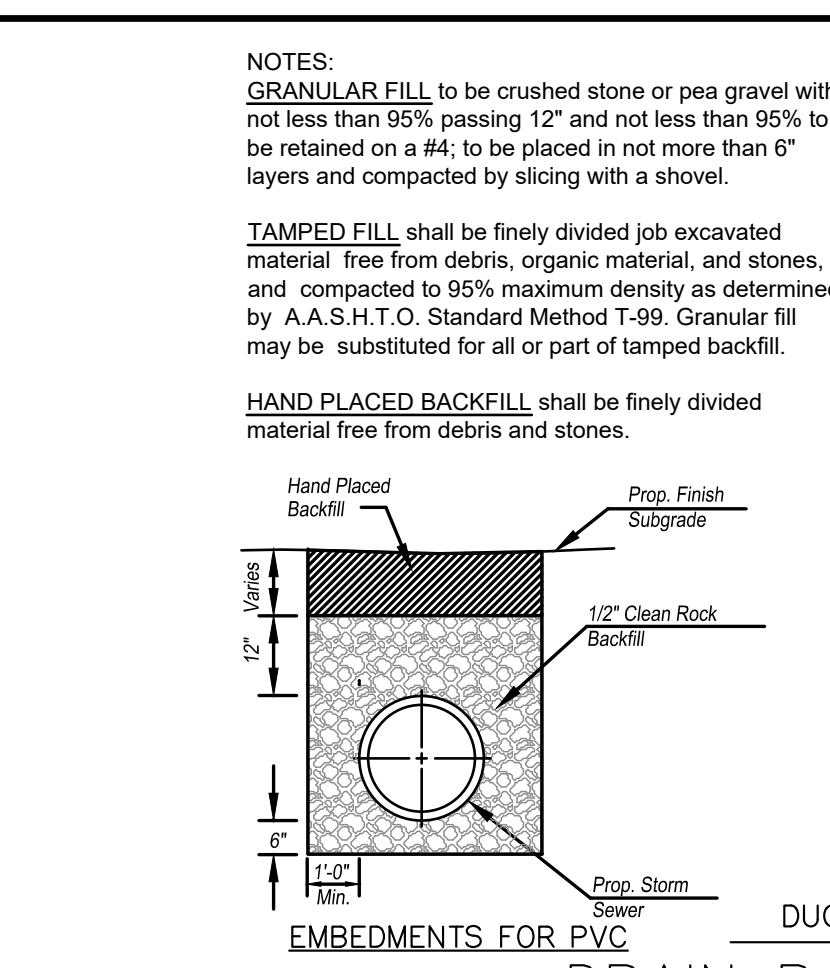
8. INITIAL BACKFILL: Suitable material shall be ASTM Class IA or ASTM Class IB, KDOT PB-2 or KDOT PB-3 or similar crushed aggregate product as approved in the pipe zone extending not less than 6" above crown of pipe. The contractor shall provide documentation for material specification to engineer. Material shall be installed in accordance with ASTM D2321, latest edition. Install and compact in 6" maximum lifts.

9. MINIMUM COVER: Minimum cover, H, in non-traffic applications (grass or landscape areas) is 18" from top of pipe to ground surface. Additional cover may be required to prevent flotation. For traffic applications, minimum cover, H, is 18" up to 24" diameter pipe and 24" of cover for up to 60" diameter pipe, measured from top of pipe to bottom of flexible pavement or to top of rigid pavement.

PIPE DIAMETER	MIN. TRENCH WIDTH
4"	21"
6"	23"
8"	25"
10"	28"
12"	30"
15"	34"
18"	39"
24"	48"
30"	56"
36"	64"
42"	72"
48"	80"
54"	88"
60"	96"

*Trench centered on pipe

HDPE INSTALLATION DETAIL



CASTINGS SHALL BE RATED FOR LIGHT WHEEL LOAD TRAFFIC

QUALITY: MATERIAL SHALL CONFORM TO ASTM A48 - CLASS 30B

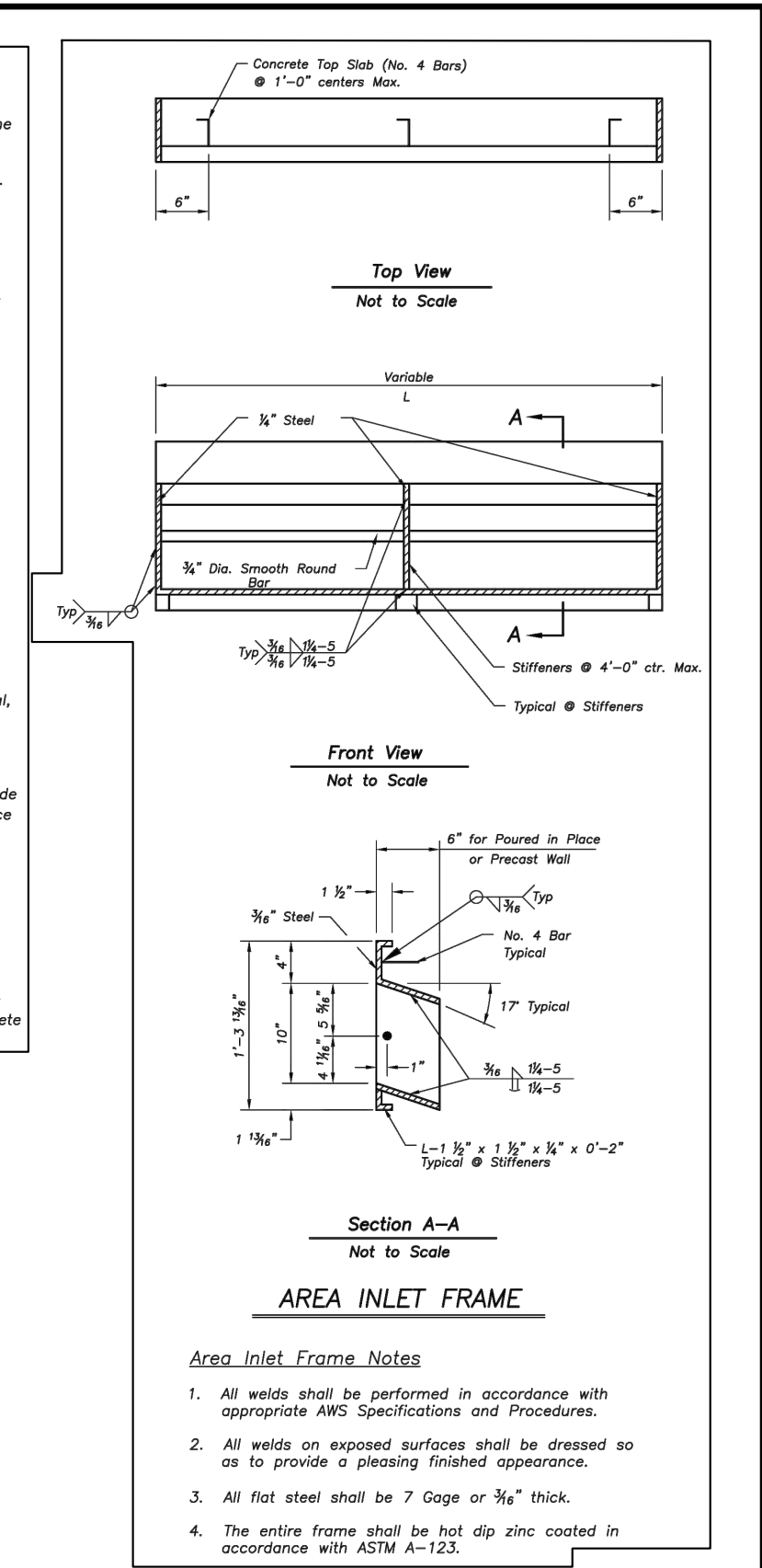
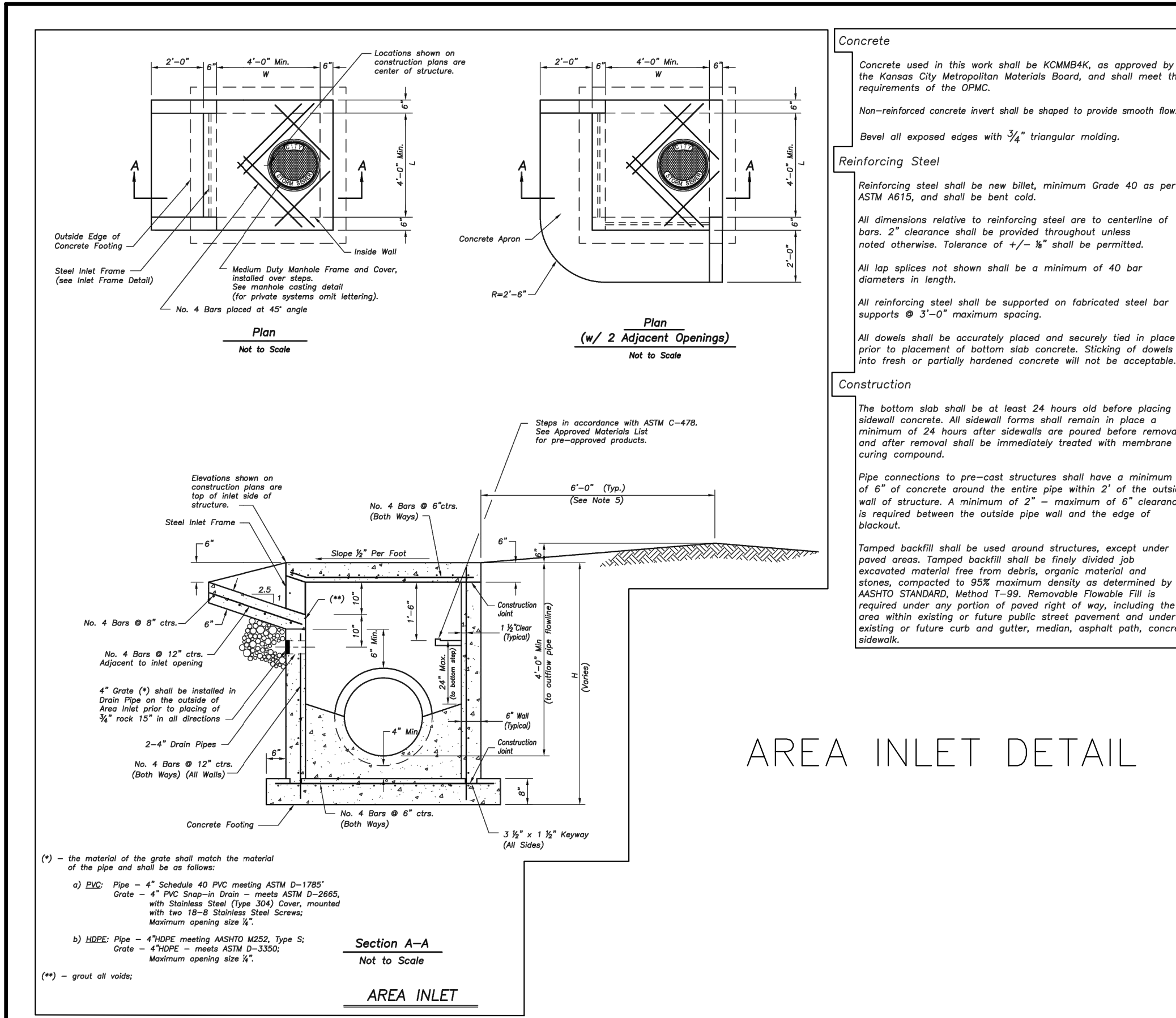
PAINT: CASTINGS SHALL BE FURNISHED WITH A BLACK PAINT

GRATES PROVIDED SHALL CONFORM TO "NYLOPLASTS" TECHNICAL MANUAL (PUBLICATION NUMBER NP028)" DATED APRIL 1997. ALTERNATE MATERIALS SHALL BE APPROVED PRIOR TO SUBMITTAL OF BIDS.

STANDARD (A-20) RATED GRATE

EMBEDMENTS FOR PVC

DRAIN BASIN INSTALLATION



KCKCC PERFORMING ARTS CENTER STORMWATER IMPROVEMENTS

TYPICAL SITE DETAILS

CITY OF KANSAS CITY, KANSAS
 PROJECT NO. 202400665-010
 ISSUE DATE: 9-05-2025

REVISIONS

ENGINEER: PLK
 CHECKED BY: TMS

DRAWN BY: BGL
 FIELD BOOK NO.

SHEET NO.
C-1.04