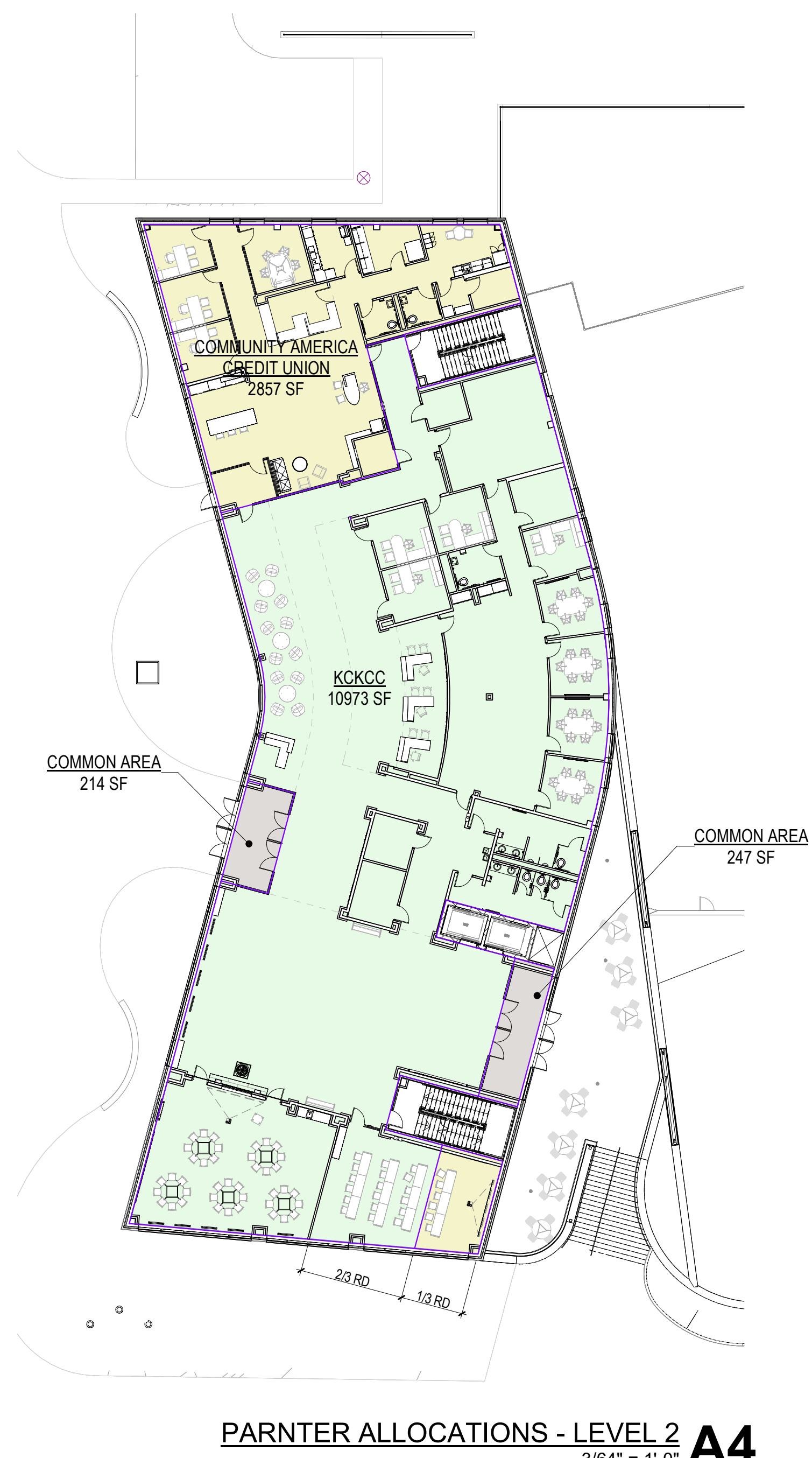
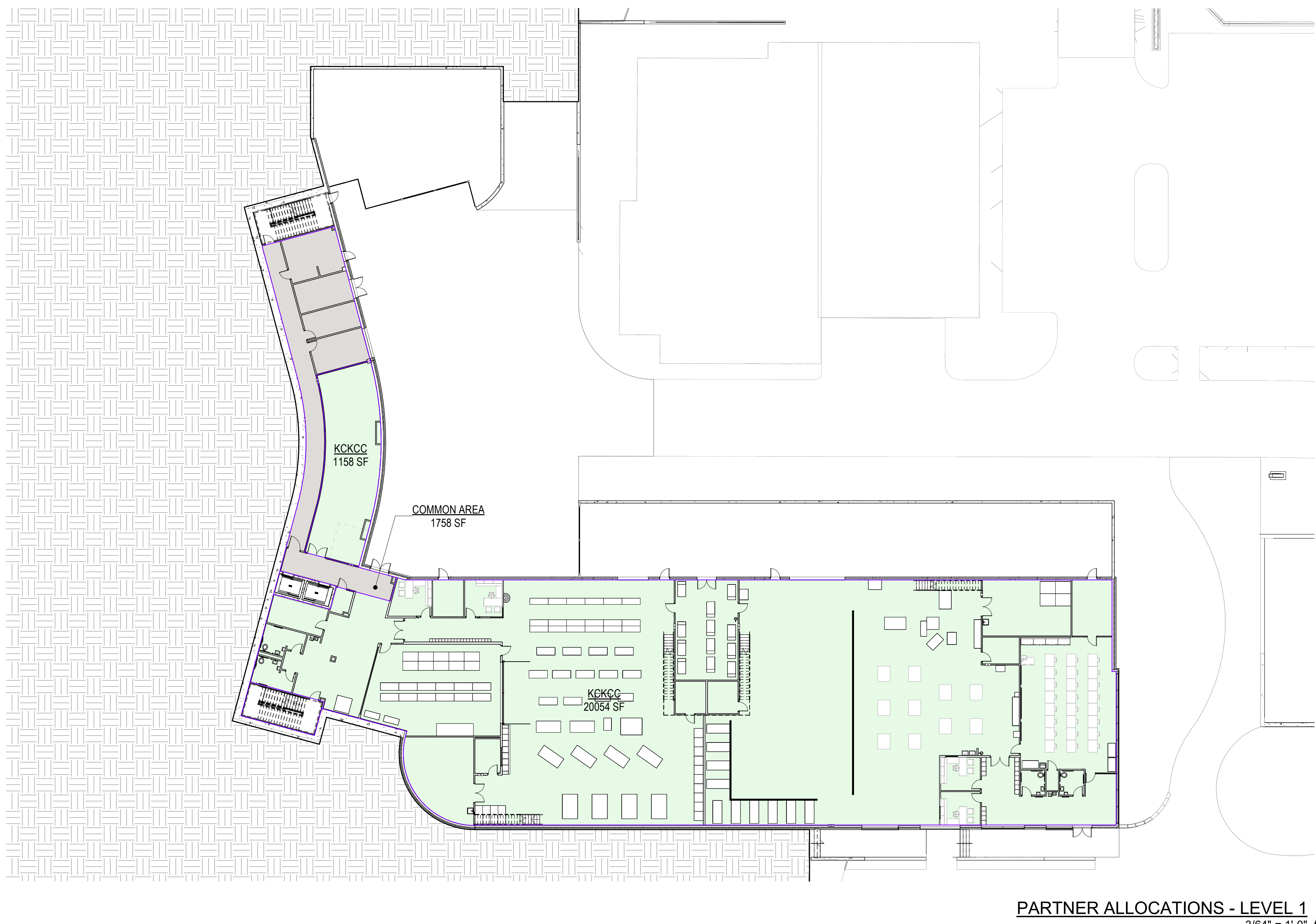


7/26/2024 2:55:03 PM Autodesk Docs\\53664-00\\KCC Community Education Health and Wellness Center\\53664-00\\KCC CEHWC_R2023.rvt



PARNTER ALLOCATIONS - LEVEL 2
3/64" = 1'-0" **A4**



PARTNER ALLOCATIONS - LEVEL 1
3/64" = 1'-0" **A1**



PARTNER ALLOCATION - LEVEL 5
3/64" = 1'-0" **C4**



PARTNER ALLOCATION - LEVEL 4
3/64" = 1'-0" **C3**



PARTNER ALLOCATION - LEVEL 3
3/64" = 1'-0" **C2**

- COMMON AREA
- COMMUNITY AMERICA CREDIT UNION
- KCKCC
- SWOPE HEALTH

TI AREA - OVERALL	
Name	Area
COMMON AREA	2219 SF
COMMUNITY AMERICA CREDIT UNION	3128 SF
KCKCC	64391 SF
SWOPE HEALTH	15991 SF
	85729 SF

PGAV
ARCHITECTS
PECKHAM GUYTON ALBERS & VIETS, INC.
4800 Main Street, #100, Kansas City, MO 64112
(816) 984-4500
www.pgav.com

STEPHEN L. TROESTER
LICENSED
4424
KANSAS
PROFESSIONAL PROJECT

7/26/2024

THE SEAL AND SIGNATURE APPLY ONLY TO THE DOCUMENT TO WHICH
THE SEAL AND SIGNATURE ARE APPLIED. THE SEAL AND SIGNATURE DO NOT
GUARANTEE THE ACCURACY OF THE INFORMATION CONTAINED IN THIS
DOCUMENT OR THE QUALITY OF THE WORK. THE SEAL AND SIGNATURE
DO NOT GUARANTEE THE QUALITY OF THE WORK.

SK DESIGN GROUP
4800 COLLEGE BOULEVARD, SUITE 100
OVERLAND PARK, KS 66211
(816) 451-1818
WWW.SKDG.COM

VIREO
414 OAK STREET, SUITE 101
KANSAS CITY, MO 64105
(816) 745-5000
WWW.VIREO.COM

BOB D. CAMPBELL & CO.
4208 BELLEVUE AVENUE
KANSAS CITY, MO 64111
(816) 521-4144
WWW.BDC-ENGINEERS.COM

HENDERSON ENGINEERS
8345 LENEXA DRIVE, SUITE 300
LENEXA, KS 66241
(816) 742-0000
WWW.HENDERSONENGINEERS.COM

KANSAS CITY, KANSAS
COMMUNITY EDUCATION, HEALTH & WELLNESS CENTER

KANSAS CITY, KANSAS COMMUNITY EDUCATION, HEALTH & WELLNESS CENTER CONDOMINIUM ASSOCIATION
1101 NORTH 7TH STREET, KANSAS CITY, KS 66101

DATE DESCRIPTION

BID PACKAGE #2

Original Size: 11" x 17" Drawing may have been reduced

0' 1'

PARTNER
ALLOCATIONS

DATE: 5/17/2024
PGAV # 53664-00 CLIENT #
SHEET #

A003

A

B

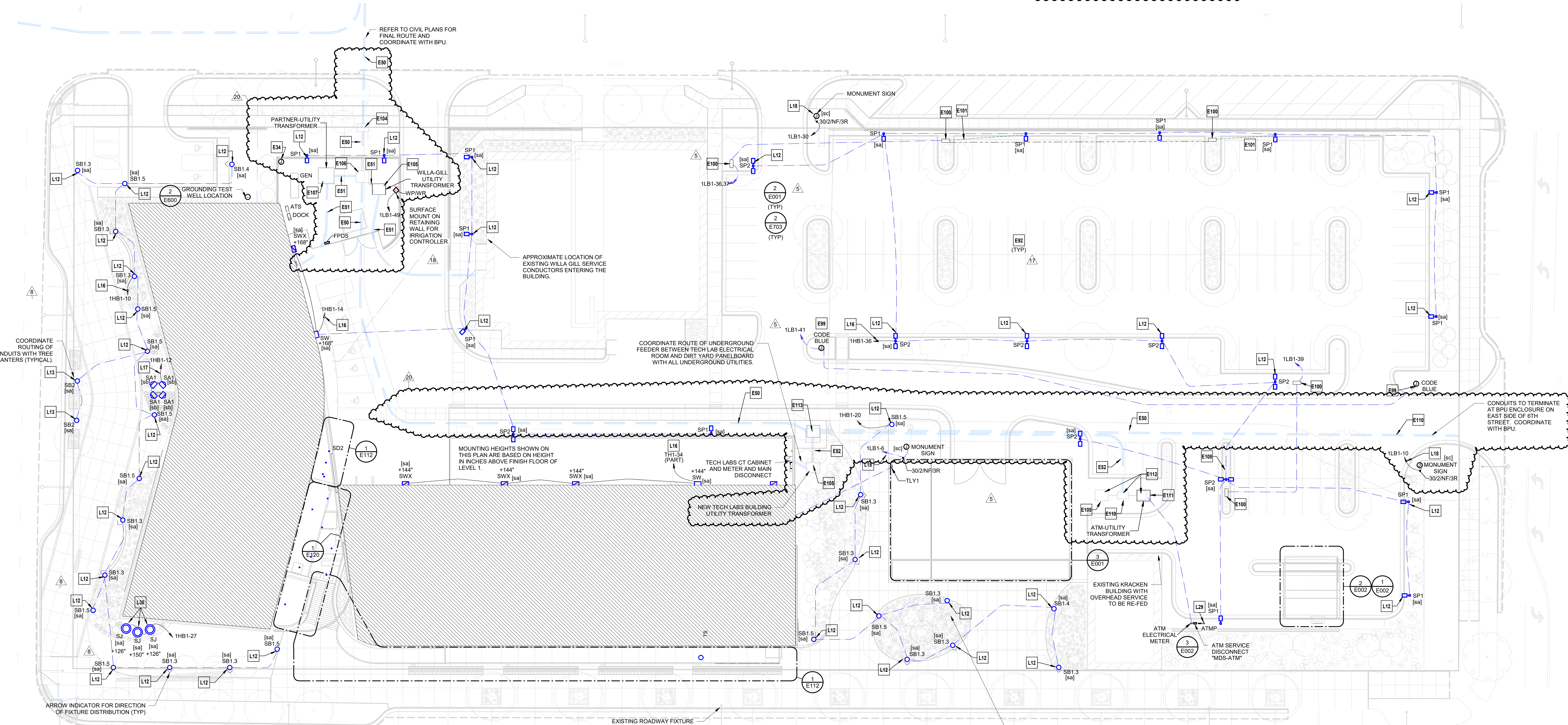
C

D

E

1 ELECTRICAL SITE PLAN DIRT YARD
3/32" = 1'-0"

2 POLE BASE DETAIL
NTS



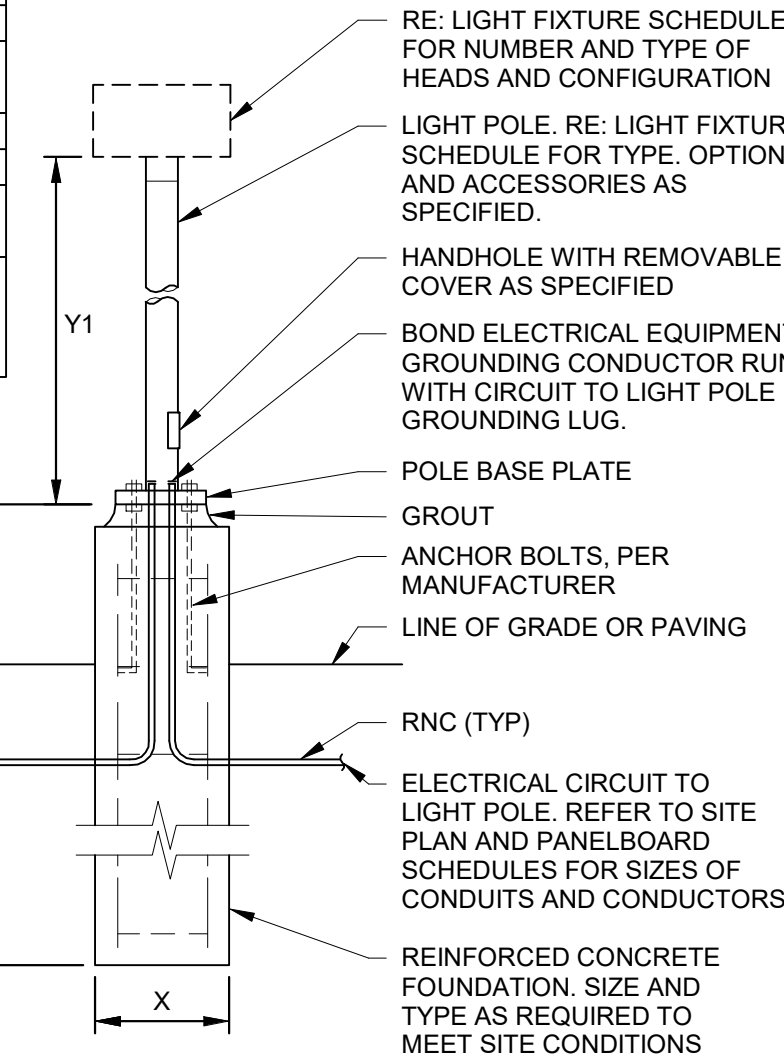
3 ELECTRICAL SITE PLAN DIRT YARD
3/32" = 1'-0"

TABLE OF DIMENSIONS*	
X	POLE HEIGHT < 16' = 1'-6"
Y1	POLE HEIGHT > 16' = 2'-0"
Y2	REFER TO LIGHT FIXTURE SCHEDULE FOR POLE HEIGHT
Y3	VEHICULAR AREAS - 3'-0"
Y4	NON-VEHICULAR AREAS - 0'-6"

* NOTE:
ALL DIMENSIONS ARE APPROXIMATE
AND ARE SHOWN FOR REFERENCE
ONLY.

REFERENCE CIVIL OR
STRUCTURAL DRAWINGS
FOR FOUNDATION
DETAILS.

PROVIDE VEHICULAR
AREA POLE HEIGHT
UNLESS NOTED
OTHERWISE ON PLAN.
VEHICULAR AREAS
SHALL BE CONSIDERED
ANY LOCATIONS WITHIN
4FT OF THE EDGE OF A
DRIVING SURFACE OR
CURB.



SITE ELECTRICAL GENERAL NOTES:

- REFER TO CIVIL DRAWINGS AND SPECIFICATIONS FOR ADDITIONAL INFORMATION. COORDINATE THE FINAL LOCATION OF ALL SITE LIGHTING POLES, SIGNAGE, UNDERGROUND UTILITIES, CONDUITS, CIRCUITRY, TRANSFORMERS AND OTHER EQUIPMENT WITH CIVIL DRAWINGS, LANDSCAPING DRAWINGS AND OWNER PRIOR TO INSTALLATION.
- SITE ELECTRICAL CONDUITS SHALL BE 1" MINIMUM, UNLESS NOTED OTHERWISE. WHERE PRACTICABLE, ALL SITE ELECTRICAL CONDUITS SHALL BE INSTALLED A MINIMUM OF 24" BELOW GRADE, UNLESS NOTED OTHERWISE. COORDINATE FINAL CONDUIT ROUTING WITH EXISTING OBSTRUCTIONS AND OTHER TRADES AND ADJUST AS NECESSARY.
- CAP AND MARK ALL UNDERGROUND CONDUITS PROVIDED FOR FUTURE USE AND INCLUDE PULL STRINGS. PROVIDE DIMENSIONED LOCATIONS OF TERMINATION POINTS ON AS-BUILT DRAWINGS AND SUBMIT TO OWNER.
- MINIMUM WIRE SIZE FOR SITE ELECTRICAL CIRCUITS SHALL BE #10 AWG CU, UNLESS NOTED OTHERWISE. ALL SITE ELECTRICAL BRANCH CIRCUIT WIRING SHALL BE SIZED SUCH THAT THE MAXIMUM BRANCH CIRCUIT VOLTAGE DROP IS LESS THAN 3 PERCENT.
- PROVIDE SPLICE AND PULL BOXES FOR SITE LIGHTING AND SITE ELECTRICAL POWER TO LIMIT MAXIMUM CONDUIT RUN TO 300'. PLACE BOXES IN A PLANTER AREA CLEAR OF VEGETATION WHEREVER PRACTICABLE. (COORDINATE FINAL LOCATION WITH CIVIL, LANDSCAPE CONTRACTOR AND OWNER). BOXES SHALL BE SUITABLE FOR LOCATION AND PROPERLY SIZED FOR QUANTITY AND SIZE OF CONDUITS IN AND OUT AND SHALL BE MARKED "ELECTRICAL". NOT ALL OF THESE BOXES ARE SHOWN ON SITE ELECTRICAL DRAWINGS; CONTRACTOR SHALL PROVIDE LOCATION ON AS-BUILT DRAWINGS AND SUBMIT TO OWNER. SPLICE BOX SHALL BE APPROPRIATE FOR LOCATION AND SHALL BE INSTALLED PER MANUFACTURER'S RECOMMENDATIONS. SPLICE BOX SHALL HAVE A MINIMUM NOMINAL SIZE OF 12"X12"X12". SHALL BE AN OPEN BOTTOM NRTL LISTED UNDERGROUND ENCLOSURE, AND SHALL AT A MINIMUM BE TIER 15 TRAFFIC RATED. REFER TO SPECIFICATIONS FOR ADDITIONAL REQUIREMENTS.

ELECTRICAL PLAN NOTES:

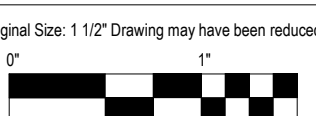
- E34 PROVIDE (1) 3/4" CONDUIT AND (1) SINGLE GANG NEMA-3R JUNCTION BOX WITH COVER PLATE FOR SECURITY CAMERA ROUGH-IN. ROUTE CONDUIT BACK TO ELEC ROOM 101. VERIFY ROUTING WITH OWNER PRIOR TO COMMENCE OF WORK. COORDINATE MOUNTING HEIGHT WITH OWNER PRIOR TO ROUGH-IN.
- E50 PROVIDE (2) 4" CONDUITS TO EACH OF THE TWO (2) BPU ENCLLOSURES. CONCRETE ENCASED WHERE UNDER PAVEMENT. REFER TO CIVIL PLANS FOR ROUTING.
- E51 INSTALL (2) 4" CONDUITS TO EACH OF THE TWO (2) BPU ENCLLOSURES. CONCRETE ENCASED WHERE UNDER PAVEMENT. REFER TO CIVIL PLANS FOR ROUTING.
- E52 INSTALL (2) 4" CONDUITS TO EACH OF THE TWO (2) BPU ENCLLOSURES. CONCRETE ENCASED WHERE UNDER PAVEMENT. REFER TO CIVIL PLANS FOR ROUTING.
- E92 UNLESS DIRECTED OTHERWISE BY KKKCC SECURITY, ALL CONDUITS INDICATED FOR FIBER SHALL BE ROUTED TO LEVEL 111 ROOM 111. CURRENT DRAWINGS INTENT FOR CONDUITS IS AS FOLLOWS:
- CONDUITS SERVING BLUE PHONES MAY BE INSTALLED IN SERIES; ONLY ONE CONDUIT TO THE FIRST BLUE PHONE, THEN CONTINUE CONDUIT ON TO ADDITIONAL CODE BLUE PHONES.
- CONDUITS SERVING POLE MOUNTED CAMERAS MAY BE INSTALLED IN SERIES; ONE CONDUIT TO THE FIRST SECURITY ENCLOSURE WITH POWER HOMERUN INDICATED, THEN CONTINUE CONDUIT FOR FIBER ON TO ADDITIONAL SECURITY ENCLOSURES.
- E99 LOCATION OF CODE BLUE PUBLIC TELEPHONE. PROVIDE POWER AND (11") CONDUIT WITH PULL STRING FROM LOCATION OF CODE BLUE STATION BACK TO BUILDING 111 ROOM FOR FIBER OPTIC CABLING. COORDINATE INSTALLATION WITH OTHER TRADES.
- E100 PROVIDE 24" TALL, 16" WIDE AND 12" DEEP (MIN) HOFFMAN NVENT NEMA 3R ENCLOSURE WITH HINGED GASKETED LOCKABLE COVER, LOW FILTERED INTAKE WITH TOP FRONT HOOD EXHAUST, AND FAN. POWDER FINISHED STEEL WITH LOW SOLAR ABSORPTION. INSTALL 20A, 120V, WEATHER RESISTANT GFCI RECEPTACLE WITHIN ENCLOSURE. RECEPTACLE AND FAN SHALL BE ON SAME CIRCUIT. INSTALL BASE SUPPORT AS REQUIRED BY MANUFACTURER WITH BOTTOM INTAKE 6-INCHES ABOVE FINISHED GRADE. COORDINATE INSTALLATION WITH OTHER TRADES.
- E101 INSTALL CONDUIT BELOW GRADE FROM FIBER CONVERTER ENCLOSURE TO POLE WITH SECURITY DEVICES. REFER TO DETAIL FOR ADDITIONAL INFORMATION.
- E104 INSTALL PRIMARY ENCLOSURE FURNISHED BY BPU PER ESS-5.15
- E105 PROVIDE TRANSFORMER PAD PER BPU ESS-5.12 THREE PHASE TX 75-500KVA
- E106 PROVIDE PME-9 FOUNDATION PER BPU DETAIL UM.6. REFER TO DETAIL UM.6 ON SHEET E002 FOR ADDITIONAL INFORMATION.

ELECTRICAL PLAN NOTES:

- E107 PROVIDE TRANSFORMER PAD PER BPU ESS-5.13 THREE PHASE TX 750-2500KVA
- E108 PROVIDE FLUSH GRADE PULL BOX ADJACENT TO POLE WHERE MORE THAN TWO RACEWAYS FEED FIXTURES AND WILL NOT REMAIN CONCEALED WITHIN POLE EXTENTS.
- E110 INSTALL PRIMARY ENCLOSURE FURNISHED BY BPU PER ESS-5.15
- E111 PROVIDE TRANSFORMER PAD PER BPU ESS-5.9 SINGLE PHASE TX 25-100 KVA
- E112 10' CLEAR AT NORTH SIDE OF ALL THREE ITEMS. 3' AT EAST, WEST, AND SOUTH SIDES
- E113 PROVIDE PME-9 FOUNDATION PER BPU DETAIL UM.6. REFER TO DETAIL UM.6 ON SHEET E002 FOR ADDITIONAL INFORMATION.
- L12 INSTALL LIGHT POLE IN NON-VEHICULAR AREA. LOCATE EDGE OF CONCRETE BASE A MINIMUM OF 4 FEET FROM INSIDE EDGE OF CURB.
- L13 INSTALL BOLLARD OF CONCRETE BASE FLUSH WITH ADJACENT PAVED SURFACE.
- L16 LIGHTING CONTROL VIA WIRELESS CONTROL SYSTEM FOR PARKING, DRIVES & SIDEWALKS PER LIGHTING CONTROL SEQUENCE OF OPERATIONS ON SHEET E701.
- L17 LIGHTING CONTROL VIA LIGHTING CONTROL PANEL FOR LANDSCAPE, FACADE AND ARTWORK. PER LIGHTING CONTROL SEQUENCE OF OPERATIONS ON SHEET E701.
- L18 LIGHTING CONTROL VIA LIGHTING CONTROL PANEL FOR PARKING, DRIVES & SIDEWALKS PER LIGHTING CONTROL SEQUENCE OF OPERATIONS ON SHEET E701.
- L29 PROVIDE TWO SEPARATE ASTRONOMIC 7-DAY 1-CIRCUIT ELECTRONIC CONTROL IN NEMA 3R OUTDOOR METAL ENCLOSURES. TIMERS SHALL BE EQUAL TO INTERMATIC MODEL ET2802CR PROGRAMMABLE FOR 88 ON/OFF EVENTS AND 100-HOUR INTEGRAL BATTERY BACKUP. ONE TIMECLOCK TO CONTROL SIGNAGE, ONE TIMECLOCK TO CONTROL LIGHTING. PROGRAM PER OACJ REQUIREMENTS. PROVIDE SLOPED TOP HOFFMAN BOX WITH LOCKABLE HINGED DOOR TO CONCEAL TIMECLOCKS. EQUAL TO MODEL CSD161685T. STEEL BOX, IP66 RATING AND SUPPORTED BY SLOTTED STEEL SUPPORT STRUCTURE.
- L30 TYPE SJ LIGHTS MOUNTED TO FLAG POLE. MOUNT FLAG LIGHTS AT MANUFACTURER SPECIFIED HEIGHT BASED ON HEIGHT OF EACH FLAG FLOW FROM POLE. PROVIDE WITH INVENTRONICS 24V, CLASS 2 POWER SUPPLY (CAT#EUW-040D1050P). MOUNT POWER SUPPLY INSIDE FLAG POLE. REFER TO MANUFACTURER'S INSTALLATION INSTRUCTIONS FOR ADDITIONAL INFORMATION. COORDINATE INSTALLATION WITH OTHER TRADES.

#	DATE	DESCRIPTION
20	02/20/2025	PR-05
18	02/07/2025	AS1-08
17	01/10/2025	AS1-07
8	08/15/2024	City Comments
5	08/14/2024	Addendum R3

BID PACKAGE #3



ELECTRICAL SITE
PLAN

DATE	7/26/2024
PG#	53664-00
SHEET #	

E001

HENDERSON
ENGINEERS
5345 LENEXA DRIVE, SUITE 300
LENEXA, KS 66214
TEL 913.742.5000 FAX 913.742.5001
WWW.HENDERSONENGINEERS.COM
220005100
KS. CORPORATE NO. E-325
EXPIRES 12/31/2025

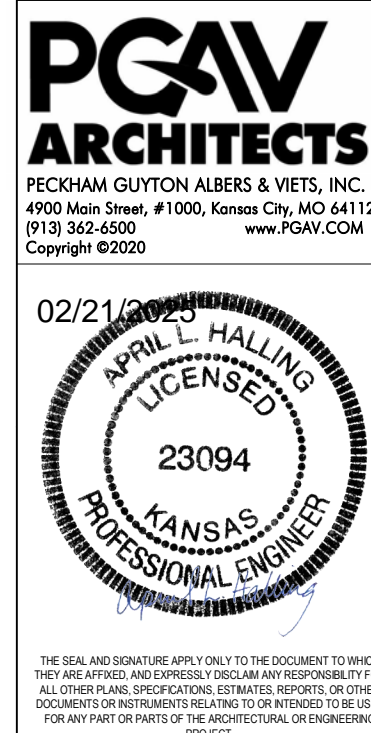
SK DESIGN GROUP
400 COLLEGE BOULEVARD, SUITE 100
OVERLAND PARK, KS 66211
913.451.5151
WWW.SKDC.COM

VIREO
414 OAK STREET, SUITE 101
KANSAS CITY, MO 64105
913.765.9590
WWW.VIREOENGINEERS.COM

BOB D. CAMPBELL & CO.
400 MILLER AVENUE
KANSAS CITY, MO 64111
WWW.BDC-ENG.COM

HENDERSON ENGINEERS
4300 MILLER AVENUE, SUITE 300
KANSAS CITY, MO 64111
913.742.5000
WWW.HENDERSONENGINEERS.COM

KANSAS CITY, KANSAS
COMMUNITY EDUCATION, HEALTH & WELLNESS CENTER
KANSAS CITY, KANSAS COMMUNITY EDUCATION, HEALTH & WELLNESS CENTER CONDOMINIUM ASSOCIATION
1101 NORTH 7TH STREET, KANSAS CITY, KS 66101



PGAV
ARCHITECTS
PETERHAM GUYTON ALBERS & VETS, INC.
4900 Main Street, #1000, Kansas City, MO 64111
913.542.4500
Copyright © 2020

A

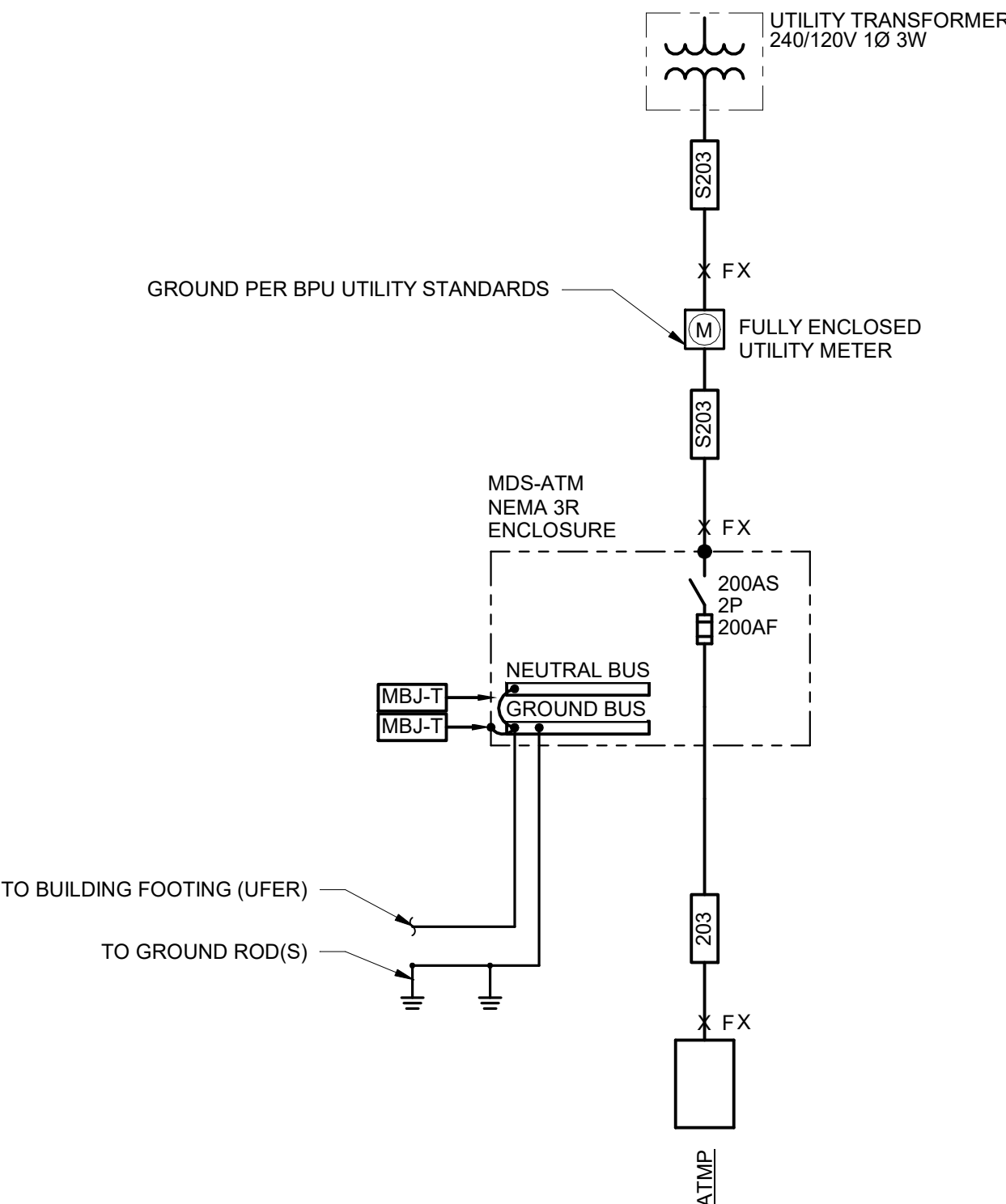
B

C

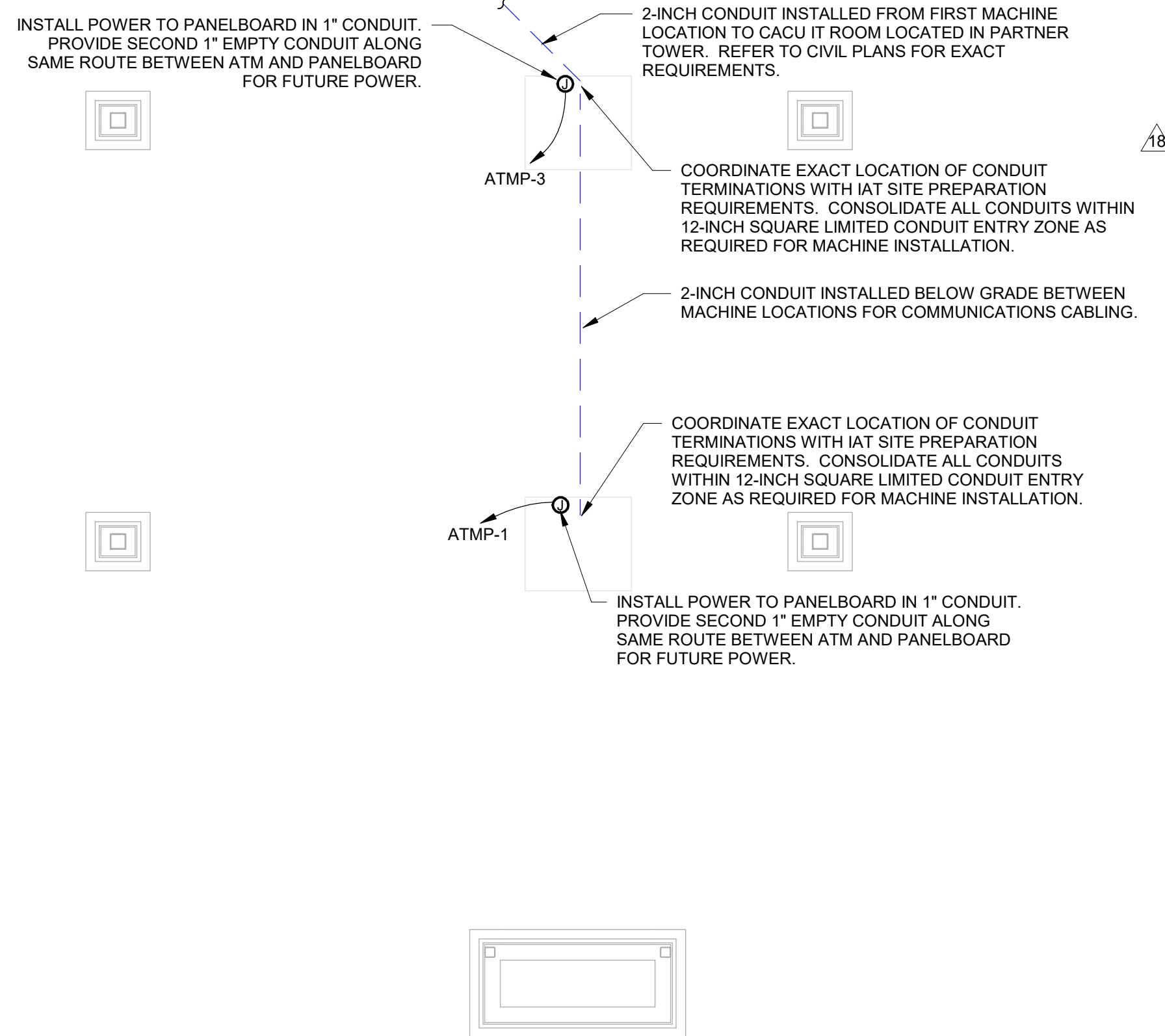
D

E

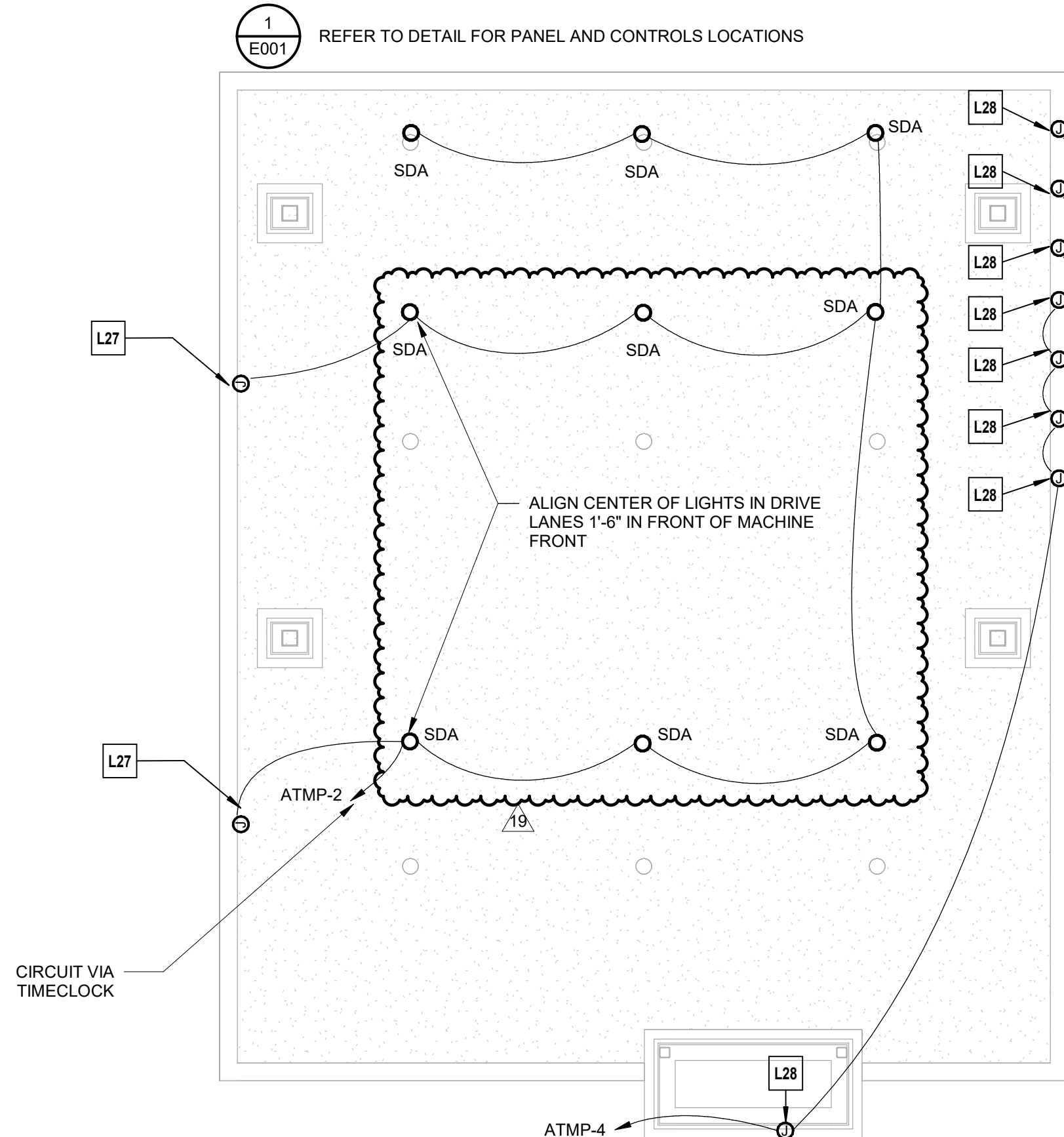
③ ELECTRICAL ONELINE DIAGRAM-ATM
NTS



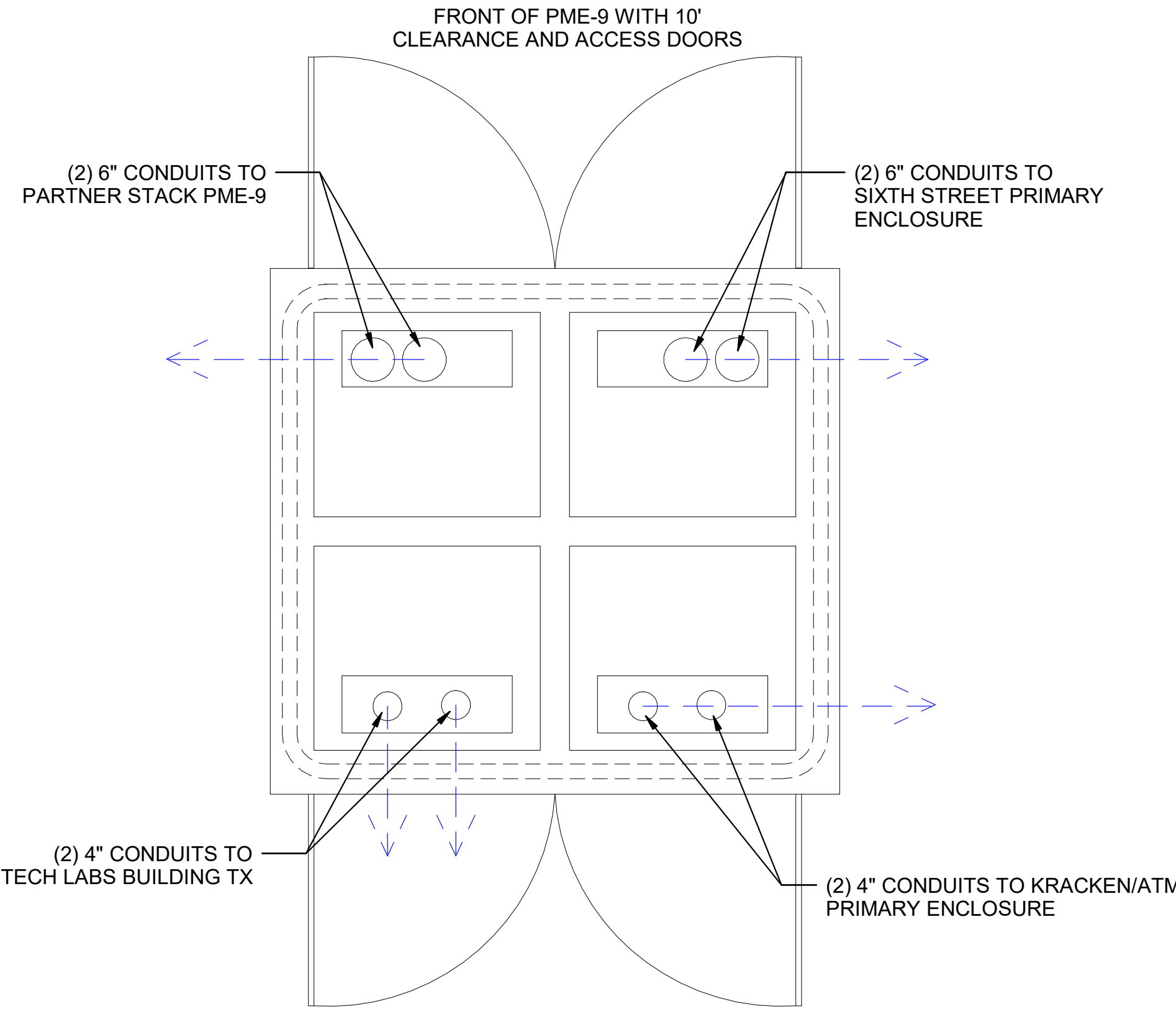
② POWER PLAN - ATM CANOPY
1/4" = 1'-0"



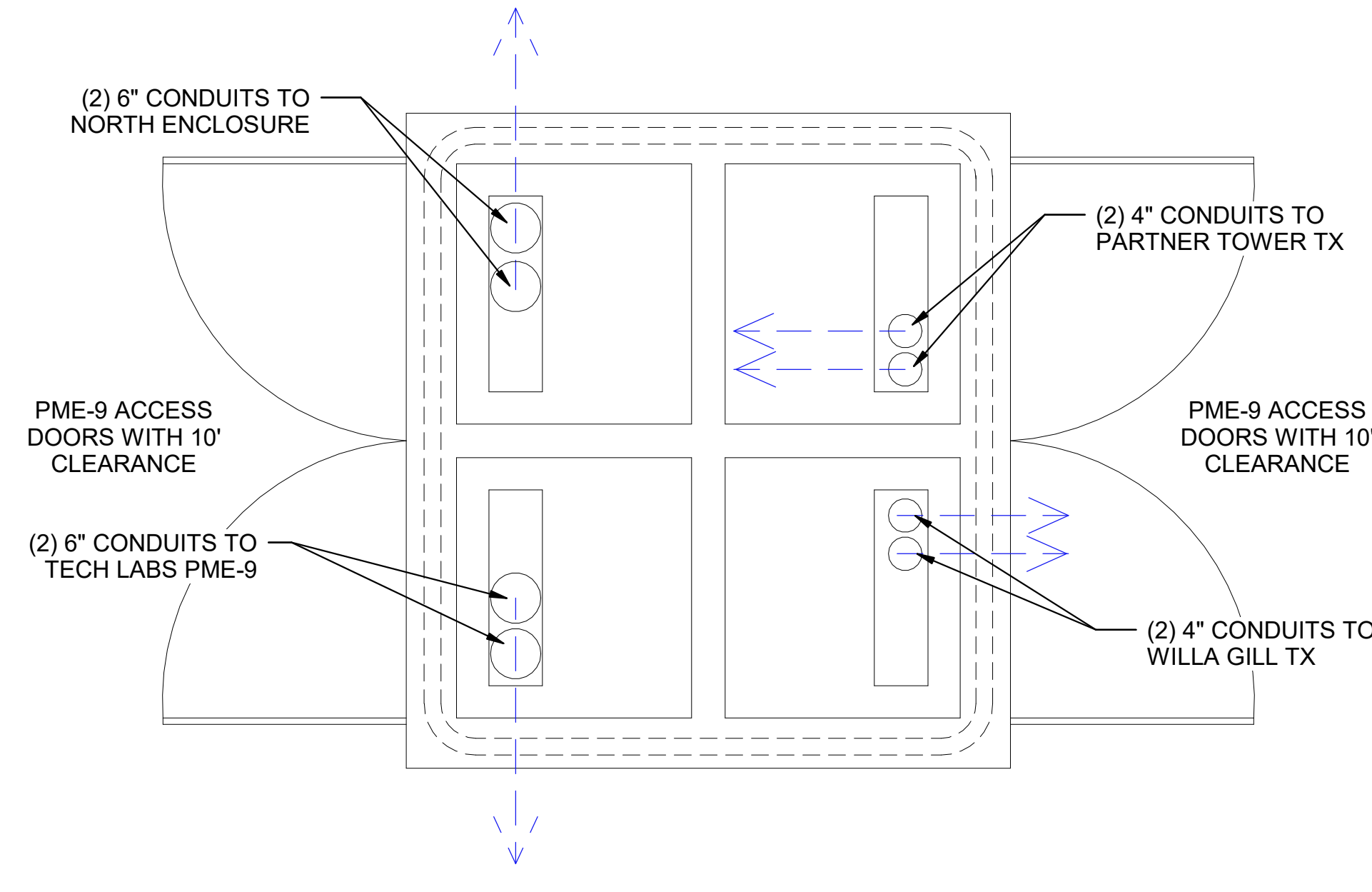
① LIGHTING - ATM CANOPY
1/4" = 1'-0"



④ PME-9 TECH LABS LAYOUT
NTS



⑤ PME-9 PARTNER TOWER LAYOUT
NTS



PANELBOARD: ATMP

BUS AMPS: 200A
MAIN SIZE/TYPE: MLO
VOLTS/PHASE: 120/240 V 1P3W
SUPPLIED BY: REFER TO ONE-LINE

FAULT CURRENT:
AIC RATED:
AIC RATING:
SERVES:
MOUNTING:
LOCATION:

EQUIPMENT GROUND BUS

SURFACE

CKT NO.	DESCRIPTION	LOAD TYPE	NOTES	WIRE SIZE	BKR	P	PHASE A				PHASE B				P	BKR	WIRE SIZE	NOTES	LOAD TYPE	DESCRIPTION	CKT NO.
							2400	1270			2400	1200									
1	ATM #1	Z		10	30	1									1	20	12		L Z	ATM CANOPY LIGHTING	2
3	ATM #2	Z		10	30	1									1	20	12		L Z	SIGNAGE DISPLAY	4
5	SPARE			20	1		0	0			0	0			1					EQUIPPED SPACE	6
7	SPARE			20	1		0	0			0	0			1					EQUIPPED SPACE	8
9	SPARE			20	1		0	0			0	0			1					EQUIPPED SPACE	10
11	SPARE			20	1		0	0			0	0			1					EQUIPPED SPACE	12
13	SPARE			20	1		0	0			0	0			1					EQUIPPED SPACE	14
15	SPARE			20	1		0	0			0	0			1					EQUIPPED SPACE	16
17	SPARE			20	1		0	0			0	0			1					EQUIPPED SPACE	18
19	SPARE			20	1		0	0			0	0			1					EQUIPPED SPACE	20
21	SPARE			20	1		0	0			0	0			1					EQUIPPED SPACE	22
23	SPARE			20	1		0	0			0	0			1					EQUIPPED SPACE	24
25	SPARE			20	1		0	0			0	0			1					EQUIPPED SPACE	26
27	SPARE			20	1		0	0			0	0			1					EQUIPPED SPACE	28
29	SPARE			20	1		0	0			0	0			1					EQUIPPED SPACE	30
TOTAL LOAD (VA):							3670 VA				3600 VA										
TOTAL AMPS:							31 A				30 A										

LOAD TYPE	CONNECTED LOAD	DEMAND FACTOR	NEC DEMAND
EXISTING LOAD (E)	0 VA	100%	0 VA
COOLING (C)	0 VA	0%	0 VA
HEATING (H)	0 VA	100%	0 VA
LIGHTING (L)	270 VA	125%	338 VA
RECEPTACLES (R)	0 VA	0%	0 VA
MOTORS (M)	0 VA	100%	0 VA
SUPPLEMENTAL HEAT (U)	0 VA	100%	0 VA
MISC EQUIP (Z)	5800 VA	100%	5800 VA
REFRIGERATION (F)	0 VA	100%	0 VA
SIGNAGE (S)	1200 VA	125%	1500 VA
KITCHEN (K)	0 VA	100%	0 VA
LARGEST MOTOR	0 VA	125%	0 VA
SHOW WINDOW (W)	0 VA	125%	0 VA
TRACK LIGHTING	0 VA	100%	0 VA

PANELBOARD NOTES

PANELBOARD TOTALS

TOTAL CONNECTED LOAD	7270 VA
TOTAL NEC LOAD	7638 VA
TOTAL CONNECTED CURRENT	30 A
TOTAL NEC DEMAND CURRENT	32 A

ELECTRICAL PLAN NOTES:

- L27 PROVIDE JUNCTION BOX FOR SURFACE MOUNTED LANE LIGHTS. COORDINATE EXACT LOCATION WITH ARCHITECTURAL ELEVATIONS AND OWNER PRIOR TO ROUGH-IN.
- L28 POWER FOR ILLUMINATED SIGNAGE. PROVIDE ALL BOXES AND RACEWAYS REQUIRED FOR ALL CONNECTIONS PER MANUFACTURER REQUIREMENTS.



SK DESIGN GROUP
4800 COLLEGE BOULEVARD, SUITE 100
OVERLAND PARK, KS 66211
(913) 451-1818
WWW.SKDGROUP.COM

VIREO
414 OAK STREET, SUITE 101
KANSAS CITY, MO 64110
(816) 766-9000
WWW.VIREOENGINEERS.COM

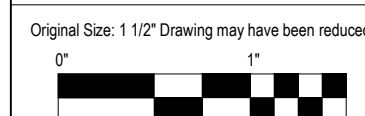
BOB D. CAMPBELL & CO.
4308 BELLEVUE AVENUE
KANSAS CITY, MO 64111
(816) 824-4444
WWW.BDC-ENGINEERS.COM

HENDERSON ENGINEERS
8345 LENEXA DRIVE, SUITE 300
LENEXA, KS 66214
(913) 742-5000
WWW.HENDERSONENGINEERS.COM

KANSAS CITY, KANSAS
COMMUNITY EDUCATION, HEALTH & WELLNESS CENTER
KANSAS CITY, KANSAS COMMUNITY EDUCATION, HEALTH & WELLNESS CENTER CONDOMINIUM ASSOCIATION
1101 NORTH 17TH STREET, KANSAS CITY, KS 66101

#	DATE	DESCRIPTION
20	02/20/2025	PR-05
19	3/07/2025	AS-09
18	02/07/2025	AS-08

BID PACKAGE #3



ELECTRICAL SITE
ATM PLANS

DATE	7/26/2024
PGAV #	53664-00
CLIENT #	
SHEET #	

E002

HENDERSON
ENGINEERS
8345 LENEXA DRIVE, SUITE 300
LENEXA, KS 66214
TEL 913.742.5000 FAX 913.742.5001
WWW.HENDERSONENGINEERS.COM

220005100
KS. CORPORATE NO. E-325
EXPIRES 12/31/2025

E

D

C

B

A

TELECOMMUNICATIONS SYMBOLS

THIS IS A MASTER LEGEND AND NOT ALL SYMBOLS OR ABBREVIATIONS ARE USED.

STANDARD MOUNTING HEIGHTS

TELECOM BACKBOARD (BOTTOM OF BACKBOARD)	4"
LADDER RACK IN TELECOM ROOMS (BOTTOM OF DEVICE)	90"
CABLE TRAY / CONDUIT AFC (BOTTOM OF PATHWAY)	3'(MIN)
LIGHT FIXTURE IN TELECOM ROOMS (BOTTOM OF DEVICE)	108'(MIN)
TELEPHONE WALL OUTLET (TOP OF DEVICE)	46"
DATA WALL OUTLET	SAME AS ADJACENT DEVICE, UNO
TELEVISION OUTLET	REFER TO ARCH DRAWINGS
TWGB/TGB (CENTERLINE)	84"
WALL CLOCK (CENTERLINE)	84"
INTERCOM (TOP OF DEVICE)	46"

INSTALL DEVICES AT THE MOUNTING HEIGHTS SHOWN ABOVE UNO IN THE CONSTRUCTION DOCUMENTS. MOUNTING HEIGHTS LISTED ARE ABOVE FINISHED FLOOR (AFF) OR ABOVE FINISHED GRADE (AFG) TO TOP OF OUTLET BOX. ALL DEVICES SHALL BE INSTALLED IN COMPLIANCE WITH CURRENT ADA AND LOCAL REQUIREMENTS.

ABBREVIATIONS

A	AMPERES	LAN	LOCAL AREA NETWORK
ADA	AMERICANS WITH DISABILITIES ACT	LOC	LIMITED COMBUSTIBLE CABLE
AFC	ABOVE FINISHED CEILING	LEC	LOCAL EXCHANGE CARRIER
AFF	ABOVE FINISHED FLOOR	LED	LIGHT-EMITTING DIODE
AFG	ABOVE FINISHED GRADE	LF	LINEAR FEET
AHJ	AUTHORITY HAVING JURISDICTION	MAN	METROPOLITAN AREA NETWORK
ANSI	AMERICAN NATIONAL STANDARDS INSTITUTE	MATV	MASTER ANTENNA TELEVISION
AP	ACCESS POINT	MC	MAIN CROSS-CONNECT
AV	AUDIO-VIDEO	MDF	MAIN DISTRIBUTION FRAME
AWG	AMERICAN WIRE GAUGE	MFR	MANUFACTURER
BAS	BUILDING AUTOMATION SYSTEM	MH	MAINTENANCE HOLE
BBC	BACKBONE BONDING CONDUCTOR	MM	MULTIMODE
BD	BUILDING DISTRIBUTOR	MPOE	MAIN POINT OF ENTRANCE
BDF	BUILDING DISTRIBUTION FRAME	MPOP	MAIN POINT OF PRESENCE
BFC	BELOW FINISHED CEILING	MTD	MOUNTED
C	CONDUIT	N/A	NOT APPLICABLE
CAT	CATEGORY	NEC	NATIONAL ELECTRICAL CODE
CATV	COMMUNITY ANTENNA TELEVISION	NFPA	NATIONAL FIRE PROTECTION ASSOCIATION
CCTV	CLOSED CIRCUIT TELEVISION	NIC	NOT IN CONTRACT
CD	CAMPUS DISTRIBUTOR	NANOMETRY	NANOMETER
CMP	COMMUNICATIONS PLENUM JACKET	NRTL	NATIONALLY RECOGNIZED TESTING LAB
CMR	COMMUNICATIONS RISER JACKET	OC	ON CENTER
DAS	DISTRIBUTED ANTENNA SYSTEM	OSHA	OCCUPATIONAL SAFETY AND HEALTH ADMINISTRATION
dB	DECIBELS	OSP	OUTSIDE PLUMBING
DEMO	DEMOLITION	PBB	PRIMARY BONDING BUSBAR
(E)	EXISTING	PBX	PRIVATE BRANCH EXCHANGE
ECIA	ELECTRONIC CONTRACTOR	POE	POWER OVER ETHERNET
EMI	ELECTROMAGNETIC INTERFERENCE	PON	PASSIVE OPTICAL NETWORK
EMS	ENERGY MANAGEMENT SYSTEM	POTS	PLAIN OLD TELEPHONE
EMT	ELECTRICAL METALLIC TUBING	PSSTN	PUBLIC SWITCHED TELEPHONE NETWORK
ER	EQUIPMENT ROOM	QTY	QUANTITY
FAAP	FIRE ALARM ANNUNCIATOR PANEL	RCDD	REGISTERED COMMUNICATIONS DISTRIBUTION DESIGNER
FACP	FIRE ALARM CONTROL PANEL	RMC	RIGID METAL CONDUIT
FD	FLOOR DISTRIBUTOR	RU	RACK UNIT
FMC	FLEXIBLE METAL CONDUIT	SBB	SECONDARY BONDING BUSBAR
FS	FIRE STOP SYSTEM	SCS	STRUCTURED CABLEING SYSTEM
FLR	FLOOR	SF	SQUARE FEET
FUTP	SCREEN TWISTED PAIR (SHIELDED)	SM	SINGLEMODE
GC	GENERAL CONTRACTOR	SPECS	SPECIFICATIONS
GYP	GYPSUM BOARD	TBB	TELECOMMUNICATIONS BONDING BACKBONE
HCM	HORIZONTAL CROSS-CONNECT	TBD	TO BE DETERMINED
U/UTP	UNSHIELDED TWISTED PAIR	TIA	TELECOMMUNICATIONS INDUSTRY ASSOCIATION
HH	HAND HOLE	TR	TYPICAL
HZ	HERTZ	TYP	TYPICAL
IMC	INTERMEDIATE METAL CONDUIT	UNO	UNLESS NOTED OTHERWISE
IP	INTERNET PROTOCOL	UL	UNDERWRITER LABORATORIES, INC.
ISP	INTERNET SERVICE PROVIDER	UPS	UNINTERRUPTIBLE POWER SUPPLY
ISP	INSIDE PLANT CABLE	V	VOLTS
JB	JUNCTION BOX	VCM	VERTICAL CABLE MANAGER
J-BOX	JUNCTION BOX	W	WIRE
		WAN	WIDE AREA NETWORK
		WAO	WORK AREA OUTLET
		WAP	WIRELESS ACCESS POINT
		WP	WEATHER PROOF
		WR	WEATHER RESISTANT
		WT	WATERTIGHT
		XP	EXPLOSION-PROOF

ANNOTATION

①	TECHNOLOGY PLAN CALLOUT
1	EQUIPMENT DESIGNATION (OWNER FURNISHED, CONTRACTOR INSTALLED)
☛	CONNECTION POINT OF NEW WORK TO EXISTING
① T1	DETAIL REFERENCE UPPER NUMBER INDICATES DETAIL NUMBER, LOWER NUMBER INDICATES SHEET NUMBER
① T1	SECTION CUT DESIGNATION
⊠	DEDICATED EQUIPMENT ACCESS TILE
⊞	ACCESS PANEL

LINE TYPE LEGEND

THROUGHOUT THE DRAWINGS DIFFERENT LINE TYPES ARE USED IN COMBINATION WITH THE SYMBOLS TO INDICATE THE STATUS OF ITEMS AS EXISTING, TO BE DEMOLISHED, TO BE INCLUDED AS PART OF THE NEW WORK AND/OR ITEMS WHICH ARE ANTICIPATED TO BE PROVIDED IN THE FUTURE. THE STATUS OF ITEMS USING THESE LINE TYPES ARE RELATIVE TO THE VIEW IN WHICH THEY APPEAR. PHASING SHOWN IN DRAWINGS IS NOT INTENDED TO FULLY DESCRIBE ALL NECESSARY CONSTRUCTION PHASING, WHICH IS DETERMINED BY THE CONTRACTOR AS PART OF THEIR RESPONSIBILITIES. ANY SUCH PHASES DESCRIBED IN THE CONSTRUCTION DOCUMENTS ARE GENERAL AND ONLY INTENDED TO INDICATE A BROAD ORDER FOR THE SAKE OF DESCRIBING THE PROJECT. THE FOLLOWING LINE TYPES MAY BE USED ON ANY DEVICE, EQUIPMENT, NOTE, LINE, SHAPE, ETC.

EXISTING	NEW
DEMOLISH	FUTURE

PATHWAYS	
	WIRE MESH CABLE TRAY (W*=WIDTH, H*=HEIGHT)
	VERTICAL CABLE TRAY
	UNDERGROUND CONDUIT (*#*=QUANTITY, "D"=CONDUIT DIAMETER)
	CONDUIT (*#*=QUANTITY, "D"=CONDUIT DIAMETER)
	CABLE SUPPORTS OR J-HOOKS
	CONDUIT SLEEVE (*#*=QUANTITY, "D"=CONDUIT DIAMETER)
	UL FIRESTOP SYSTEM ASSEMBLY
	PULL BOX (L*=LENGTH, W*=WIDTH, H*=HEIGHT)
	SPLICE

TELECOMMUNICATIONS ROOM

	LADDER RACK
	PRIMARY BONDING BUSBAR (PBB) - WALL ELEVATION VIEW
	SECONDARY BONDING BUSBAR (SBB) - WALL ELEVATION VIEW
	PBB/SBB - PLAN VIEW
	TELECOM BACKBOARD
	TWO-POST EQUIPMENT RACK
	FOUR-POST EQUIPMENT RACK
	EQUIPMENT CABINET (REFER TO PLAN NOTES ON ENLARGED PLANS FOR MORE INFORMATION)

TELECOMMUNICATIONS OUTLETS

SYMBOL	DESCRIPTION
	DATA WALL OUTLET FOR TV AT HEIGHT SPECIFIED BY OWNER, DOUBLE GANG BOX, SINGLE GANG MUD-RING, 3/4" CONDUIT TO ABOVE CEILING
	DATA WALL OUTLET, DOUBLE GANG BOX, SINGLE GANG MUD-RING, 3/4" CONDUIT TO ABOVE CEILING
	DATA WALL OUTLET, ABOVE COUNTER, DOUBLE GANG BOX, SINGLE GANG MUD-RING, 3/4" CONDUIT TO ABOVE CEILING

	MULTI-SERVICE FLOOR BOX WITH DATA AND POWER OUTLETS, REFER TO DRAWING SCHEDULE FOR FLOOR BOX TYPE
	MULTI-SERVICE POKE THROUGH WITH DATA AND POWER OUTLETS, REFER TO DRAWING SCHEDULE FOR POKE THROUGH TYPE
	DATA CEILING OUTLET ROUGH-IN 1-GANG BOX WITH 3/4" CONDUIT TO ABOVE ACCESSIBLE CEILING

DISTRIBUTED ANTENNA SYSTEM (DAS) DEVICES

SHOWN FOR REFERENCE ONLY	
SYMBOL	DESCRIPTION
	CELLULAR DISTRIBUTED ANTENNA SYSTEM CEILING MOUNTED DEVICE
	PUBLIC SAFETY DISTRIBUTED ANTENNA SYSTEM CEILING MOUNTED DEVICE
	CELLULAR DISTRIBUTED ANTENNA SYSTEM WALL MOUNTED DEVICE
	PUBLIC SAFETY DISTRIBUTED ANTENNA SYSTEM WALL MOUNTED DEVICE

ROUGH-IN OUTLETS

ROUGH-IN ONLY SCHEDULE			
SYMBOL	DESCRIPTION	BACK BOX	CONDUIT
	FURNITURE FEED, WALL BOX ROUGH-IN	2-GANG BACKBOX WITH 2" GROMMET	(2) 2" EMT
	FURNITURE FEED, FLOOR BOX ROUGH-IN	REFER TO SCHEDULE ON DRAWINGS	(2) 1-1/4" EMT
	FURNITURE FEED, POKE THROUGH ROUGH-IN	REFER TO SCHEDULE ON DRAWINGS	EMT TO ACCESS CEILING
	AUDIO-VIDEO SPEAKER, WALL ROUGH-IN	INSTALL AV PROVIDER'S SPEAKER BACK CAN	(1) 3/4" EMT
	AUDIO-VIDEO SPEAKER, WALL ROUGH-IN	INSTALL AV PROVIDER'S SPEAKER BACK CAN	(1) 3/4" EMT
	AUDIO-VIDEO TELEVISION, CEILING ROUGH-IN	2-GANG BACKBOX WITH 2-GANG COVER PLATE	(2) 1-1/2" EMT
	AUDIO-VIDEO TELEVISION, WALL ROUGH-IN	2-GANG BACKBOX WITH 2-GANG COVER PLATE	(2) 1-1/2" EMT
	AUDIO-VIDEO PLATE, CEILING ROUGH-IN	2-GANG BACKBOX WITH 2-GANG COVER PLATE	(2) 1-1/2" EMT
	AUDIO-VIDEO PLATE, WALL ROUGH-IN	2-GANG BACKBOX WITH 2-GANG COVER PLATE	(2) 1-1/2" EMT
	AUDIO-VIDEO MICROPHONE, WALL ROUGH-IN	2-GANG BACKBOX WITH 2-GANG COVER PLATE	(2) 1-1/2" EMT
	SECURITY ELECTRIFIED LOCK, ROUGH-IN	NA	(1) 3/4" EMT TO DOOR FRAME
	SECURITY CARD READER, WALL ROUGH-IN	1-GANG BACKBOX WITH 1-GANG COVER PLATE	(1) 3/4" EMT
	SECURITY REQUEST-TO-EXIT, WALL ROUGH-IN	1-GANG BACKBOX WITH 1-GANG COVER PLATE	(1) 3/4" EMT
	SECURITY CAMERA, CEILING ROUGH-IN	INSTALL SECURITY PROVIDER'S BACKBOX	(1) 1" EMT
	SECURITY CAMERA, WALL ROUGH-IN	1-GANG BACKBOX WITH 1-GANG COVER PLATE	(1) 1" EMT
	SECURITY INTERCOM, CEILING ROUGH-IN	1-GANG BACKBOX WITH 1-GANG COVER PLATE	(1) 1" EMT
	SECURITY INTERCOM, WALL ROUGH-IN	1-GANG BACKBOX WITH 1-GANG COVER PLATE	(1) 1" EMT
	SECURITY KEYPAD, WALL ROUGH-IN	1-GANG BACKBOX WITH 1-GANG COVER PLATE	(1) 1" EMT
	SECURITY PANIC BUTTON, WALL ROUGH-IN	1-GANG BACKBOX WITH 1-GANG COVER PLATE	(1) 1" EMT
	SECURITY MOTION DETECTOR, CEILING ROUGH-IN	1-GANG BACKBOX WITH 1-GANG COVER PLATE	(1) 1" EMT
	SECURITY MOTION DETECTOR, WALL ROUGH-IN	1-GANG BACKBOX WITH 1-GANG COVER PLATE	(1) 1" EMT

TELECOMMUNICATIONS RESPONSIBILITY MATRIX

Description	Not applicable to the project	Furnish		Install	
		Construction Team	Owner	Construction Team	Owner
General Communications					
Grounding and Bonding		X		X	
Hangers and Supports		X		X	
Conduits and Backboxes		X		X	
Cable Trays		X		X	
Surface Raceways		X		X	
Underground pathways for utility entrance and floor boxes		X		X	
Firestops, Conduit Sleeves, and Sleeve Seals		X		X	
Vibration and Seismic Controls	X				
Structured Cabling					
Telecom Room Cabinets, Racks, Frames, and Enclosures			X		X
Telecom Room Bulkhead (ex. backboard and ladder rack)			X		X
Telecom Room Uninterruptible Power Supply (UPS)			X		X
Telecom Room Power Strips			X		X
Optical Fiber Backbone Cable and Connectivity			X		X
Copper Backbone Cable and Connectivity			X		X
Coaxial Backbone Cable and Connectivity			X		X
Copper Horizontal Cable and Connectivity			X		X
Coaxial Horizontal Cable and Connectivity			X		X
Data Communications					
Router / Firewall			X		X
Core Switch / Edge Switch			X		X
Wireless Access Points			X		X
Servers / Storage and Backup			X		X
Laptops / Desktops / Copiers / Printers / Scanners			X		X
Time Clock			X		X
Software			X		X
Voice Communications					
VoIP Gateway / Analog handsets			X		X
VoIP handset wall mount kit			X		X
VoIP handsets			X		X
VoIP Network licensing			X		X
Cellular Elevator Phones			X		X
Audio-Video Communications					
Conduits and Backboxes for AV systems		X		X	
Master Antenna Television Distribution System			X		X
Refer to AV drawings for AV Scope			X		X
Distributed & Monitoring Communications					
Overhead Analog/IP Paging			X		X
Paging through Fire Alarm System			X		X
Area of Refuge Systems			X		X
Wireless Clock Systems			X		X
Analog/IP Clock Systems			X		X
Public Safety Distributed Antenna Systems (DAS)		X		X	
Electronic Safety and Security					
Conduits and Backboxes for Security systems		X		X	
Refer to Security drawings (by others) for Security Scope			X		X

GENERAL NEW WORK NOTES

1. READ THE SPECIFICATIONS AND REVIEW DRAWINGS OF ALL DIVISIONS OF WORK. COORDINATE THIS WORK WITH ALL OTHER DIVISIONS OF WORK AND ALL SUBCONTRACTORS.
2. ALL WORK SHALL CONFORM TO THE APPLICABLE SPECIFICATIONS (DIVISION 26, etc) AND THE CUSTOMER PRE-ESTABLISHED STRUCTURED CABLEING STANDARDS. SHOULD DIFFERENCES EXIST IN THE SPECIFICATIONS RELATING TO TECHNOLOGY AND THE CLIENT'S PRE-ESTABLISHED STANDARDS THE CONTRACTOR SHALL CONTACT THE LOW VOLTAGE ENGINEER FOR CLARIFICATION THROUGH THE RFI PROCESS.
3. FULLY COORDINATE ALL CABLE TRAY, FIRE STOP CONDUITS / SLEEVES, AND CONDUIT ROUTING WITH STRUCTURAL ELEMENTS. COORDINATE CABLE TRAY AND CONDUIT INSTALLATIONS WITH ARCHITECT, STRUCTURAL ENGINEER, STRUCTURAL CONTRACTOR, AND GENERAL CONTRACTOR PRIOR TO INSTALLATION. ROUTING IN CONCRETE SLAB OR UNDER SLAB (WHERE CONDUIT WOULD BE ON GRADE) REQUIRES THE USE OF WET LOCATION RATED CABLES.
4. ALL TELECOMMUNICATIONS CONTINUOUS PATHWAYS SHALL BE BONDED TO THE TELECOMMUNICATIONS BONDING BACKBONE. FOR CONDUITS, INSULATION BUSHINGS SHALL BE USED AT THE END OF THE CONDUIT THE FARTHEST AWAY FROM THE SERVING TR; A BONDING BUSHING SHALL BE USED AT THE END CLOSEST TO THE SERVING TR. CONTRACTOR TO REFER TO THE ANSI-STD-J-607 STANDARD FOR ADDITIONAL INFORMATION AS TO THE INSTALLATION OF THE TELECOMMUNICATIONS BONDING BACKBONE.
5. ALL FIRE RATED WALL / FLOOR ASSEMBLIES PENETRATED FOR TELECOMMUNICATIONS CABLEING PATHWAYS SHALL BE FIRE STOPPED WITH THE APPROVED FIRE STOP SYSTEMS (FIS). ALL FIRESTOP SYSTEMS SHALL BE INSTALLED AS DIRECTED BY THE MANUFACTURER AND AS SPECIFIED IN DIVISION 07 07.84.00 - "FIRESTOPPING". FIRE STOP ASSEMBLY LOCATIONS ARE TO BE COORDINATED WITH CABLE TRAY PATHWAY TO TELECOMMUNICATIONS ROOM.
6. BACK BOXES AND CONDUIT LOCATIONS IN PRECAST CONCRETE WALLS SHALL BE COORDINATED WITH ARCHITECT, STRUCTURAL ENGINEER, AND GC PRIOR TO ORDERING THE PRECAST WALLS.
7. TELECOMMUNICATIONS ROOMS SHALL BE DEDICATED FOR INFORMATION TECHNOLOGY USE (I.E. NO SHARED SPACE WITH A JANITOR, FIRE ALARM SYSTEM, ETC.) NO SERVICES SHALL PASS THROUGH THE SPACE UNLESS DEDICATED TO THE SPACE (NO PLUMBING, MECHANICAL, ELECTRICAL, FIRE, ETC. UNLESS SPECIFICALLY REQUIRED TO SERVE TELECOMMUNICATIONS ROOM DIRECTLY).

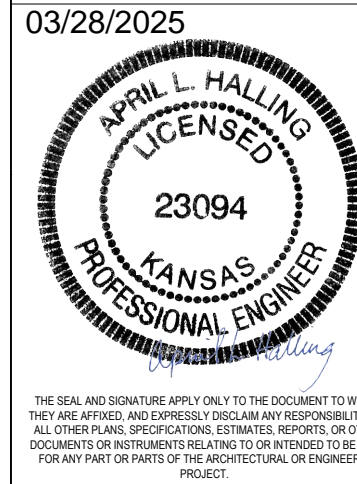
TWO-WAY COMMUNICATIONS GENERAL NOTES AND LEGEND

1. TWO-WAY COMMUNICATION SYSTEM SHALL PROVIDE COMMUNICATION AT EACH LOCATION AND A CENTRAL CONTROL POINT LOCATION APPROVED BY THE FIRE DEPARTMENT. WHERE THE CENTRAL CONTROL POINT IS NOT A CONSTANTLY ATTENDED LOCATION, THE TWO-WAY COMMUNICATION SYSTEM SHALL HAVE A TIMED AUTOMATIC TELEPHONE DIAL-OUT CAPABILITY TO A MONITORING LOCATION OR 9-1-1. (PER IBC 1009.8.1)
2. DIRECTIONS FOR USE OF THE TWO-WAY COMMUNICATION SYSTEM AND WRITTEN IDENTIFICATION OF THE LOCATION SHALL BE POSTED ADJACENT TO THE TWO-WAY COMMUNICATION SYSTEM. SIGNAGE SHALL COMPLY WITH THE ICC A117.1 REQUIREMENTS FOR VISUAL CHARACTERS. (PER IBC 1009.8.2)
3. THE TWO-WAY COMMUNICATION SHALL BE HANDS-FREE DEVICE AND SHALL PROVIDE BOTH AUDIBLE AND VISIBLE SIGNALS TO INDICATE COMMUNICATION HAS OCCURRED, AND INDICATE TO THE RECEIVER THE LOCATION SENDING THE SIGNAL. (PER IBC 1009.8.1 AND NFPA 72, 24.10.7)

- ☞ TWO-WAY COMMUNICATION DEVICE. PROVIDE CABLE FROM CALL BOX TO COMMAND CENTER PER MANUFACTURER'S RECOMMENDATIONS. REFER TO KEYNOTES FOR ADDITIONAL INFORMATION.

HATCHING LEGEND

ENLARGED PLAN	
NOT IN SCOPE (NIS)	



SK DESIGN GROUP
4000 COLLEGE BOULEVARD, SUITE 100
OVERLAND PARK, KS 66211
913.451.5818
www.skdsg.com

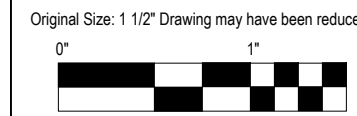
VIREO
414 OAK STREET, SUITE 101
KANSAS CITY, MO 64108
913.755.5600
www.vireoeng.com

BOB D. CAMPBELL & CO.
4308 MILLER AVENUE
KANSAS CITY, MO 64111
913.451.4141
www.bdc-engr.com

HENDERSON ENGINEERS
4241 LENEXA DRIVE, SUITE 300
LENEXA, KS 66214
913.742.5000
www.hendersonengineers.com

21 03/24/2025 PR-07
DATE DESCRIPTION

BID PACKAGE #3

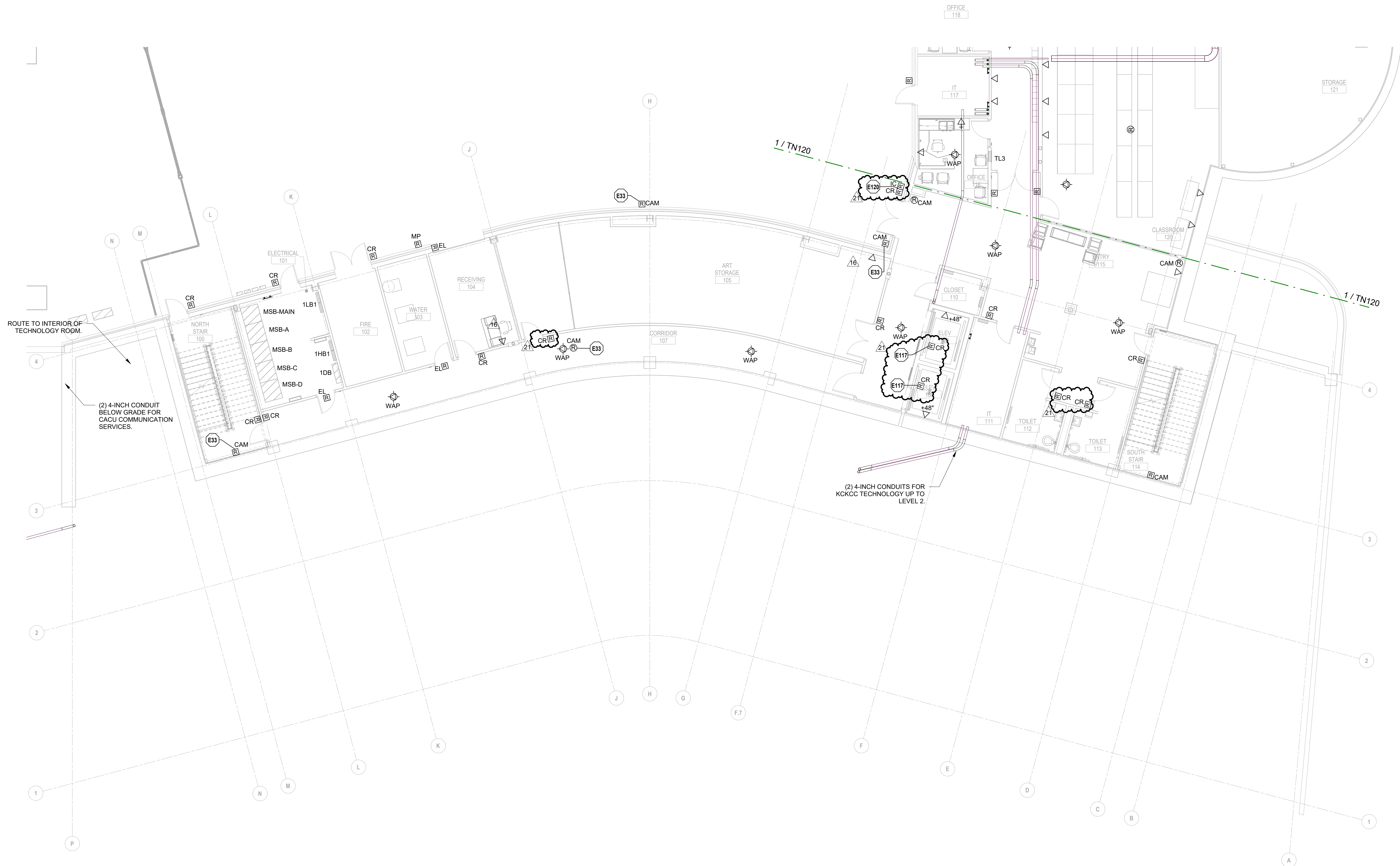


TECHNOLOGY GENERAL NOTES AND LEGEND

DATE: 7/26/2024
PGAV # 53664-00 CLIENT #
SHEET #

HENDERSON ENGINEERS
5345 LENEXA DRIVE, SUITE 300
LENEXA, KS 66214
TEL 913.742.5000 FAX 913.742.5001
www.hendersonengineers.com
225003-100
KS CORPORATE NO. E-325
EXPIRES 12/31/2025

TN000



1 TECHNOLOGY - LEVEL 1 PLAN - AREA A
1/8" = 1'-0"

○ **TECHNOLOGY PLAN NOTES:**
E33 COORDINATE MOUNTING HEIGHT OF CAMERA WITH OWNER PRIOR TO ROUGH-IN.
E117 COORDINATE RACEWAYS AND BOXES REQUIRED WITH ELEVATOR MANUFACTURER TO ALLOW INSTALLATION OF SECURITY CARD READER.
E120 COORDINATE LOCATION OF CARD READER, ADA PUSHBUTTON, AND VIDEO INTERCOM WITH LOW VOLTAGE VENDOR PRIOR TO ROUGH-IN. A COMBINATION VIDEO INTERCOM/CR DEVICE IS PREFERRED.

KANSAS CITY, KANSAS
COMMUNITY EDUCATION, HEALTH & WELLNESS CENTER
KANSAS CITY, KANSAS COMMUNITY EDUCATION, HEALTH & WELLNESS CENTER CONDOMINIUM ASSOCIATION
1101 NORTH 17TH STREET KANSAS CITY, KS 66101

21	03/24/2025	PR-07
16	12/23/2024	AS-06
5	08/14/2024	Addendum #3
#	DATE	DESCRIPTION

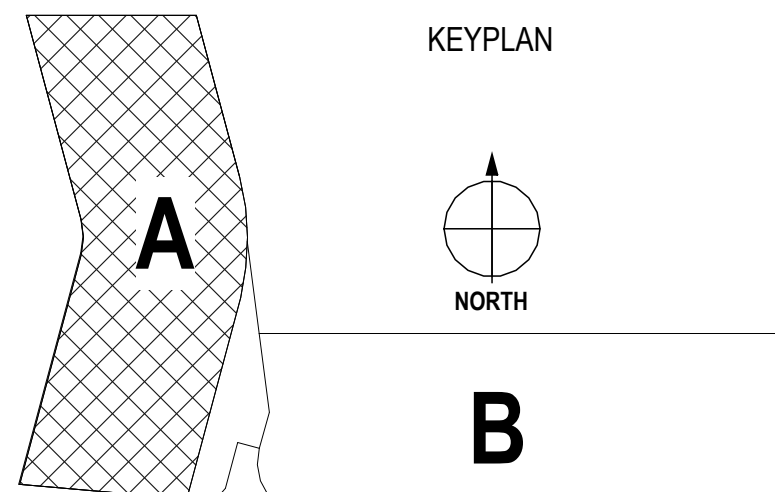
BID PACKAGE #3

Original Size: 11" x 17" Drawing may have been reduced.
1" = 1'

TECHNOLOGY - LEVEL 1 PLAN - AREA A

DATE	7/26/2024
PGAV #	53664-00
SHEET #	

TN110



HENDERSON ENGINEERS
8345 LENEXA DRIVE, SUITE 300
LENEXA, KS 66214
TEL 913.742.5000 FAX 913.742.5001
WWW.HENDERSONENGINEERS.COM

225000100
KS. CORPORATE NO. E-325
EXPIRES 12/31/2025

4/20/25 2:44:31 PM Autodesk Docs:53664-00 KCC Community Education Health and Wellness Center:225000100 KCC CE/HWC_MEP_221.rvt

E

D

C

B

A

WHERE EXPOSED TO VIEW IN AET LAB 123, CONSTRUCTION TECH LAB 127, ALL MEZZANINES OPEN TO LABS AND ELECTRICAL 130, RACEWAYS, CONDUITS AND BOXES FOR DIFFERENT SYSTEMS REQUIRE DIFFERENT PAINT COLOR FINISHES. REFER TO ARCHITECTURAL MATERIAL LEGEND ON SHEET A900 AND DIVISION 26 SPECIFICATIONS FOR ADDITIONAL REQUIREMENTS.

1 TECHNOLOGY - LEVEL 1 PLAN - AREA B
1/8" = 1'-0"

- TECHNOLOGY PLAN NOTES:
- E33 COORDINATE MOUNTING HEIGHT OF CAMERA WITH OWNER PRIOR TO ROUGH-IN.
- E12 COORDINATE LOCATION OF CARD READER, ADA PUSHBUTTON, AND VIDEO INTERCOM WITH LOW VOLTAGE VENDOR PRIOR TO ROUGH-IN. A COMBINATION VIDEO INTERCOM/CARD READER IS PREFERRED.

PGAV ARCHITECTS
PETERMAN GUYTON ALBERS & VETS, INC.
4000 West Street, #1000, Kansas City, MO 64111
816.342.4500
www.pgav.com

04/04/2025

APRIL L. HALLS
LICENSED
23094
KANSAS
PROFESSIONAL ENGINEER

THIS SEAL AND SIGNATURE ARE VALID ONLY FOR THE DOCUMENT TO WHICH THEY ARE APPLIED. ANY REUSE OF THIS SEAL OR SIGNATURE FOR ANY OTHER DOCUMENT OR PROJECT IS A VIOLATION OF THE KANSAS PROFESSIONAL ENGINEERING ACT AND MAY BE PENALIZED BY THE BOARD OF PROFESSIONAL ENGINEERS. PROJECT:

SK DESIGN GROUP
4000 COLLEGE BOULEVARD, SUITE 100
OVERLAND PARK, KS 66111
816.451.1515
www.skdesign.com

VIREO
414 OAK STREET, SUITE 101
KANSAS CITY, MO 64108
816.765.5650
www.vireo.com

BOB D. CAMPBELL & CO.
4308 MILLVIEW AVENUE
KANSAS CITY, MO 64111
816.251.4144
www.bdc-engineers.com

HENDERSON ENGINEERS
8345 LENEXA DRIVE, SUITE 300
LENEXA, KS 66214
816.742.5000
www.hendersonengineers.com

KANSAS CITY, KANSAS
COMMUNITY EDUCATION, HEALTH & WELLNESS CENTER
KANSAS CITY, KANSAS COMMUNITY EDUCATION, HEALTH & WELLNESS CENTER CONDOMINIUM ASSOCIATION
1101 NORTH 17TH STREET KANSAS CITY, KS 66101

21	03/24/2025	PR-07
16	12/23/2024	AS-B06
5	08/14/2024	Addendum #3
#	DATE	DESCRIPTION

BID PACKAGE #3

Original Size: 11" x 17" Drawing may have been reduced.
1" = 1'

TECHNOLOGY - LEVEL 1 PLAN - AREA B

DATE: 7/26/2024
PGAV # 53664-00 CLIENT #
SHEET #

TN111

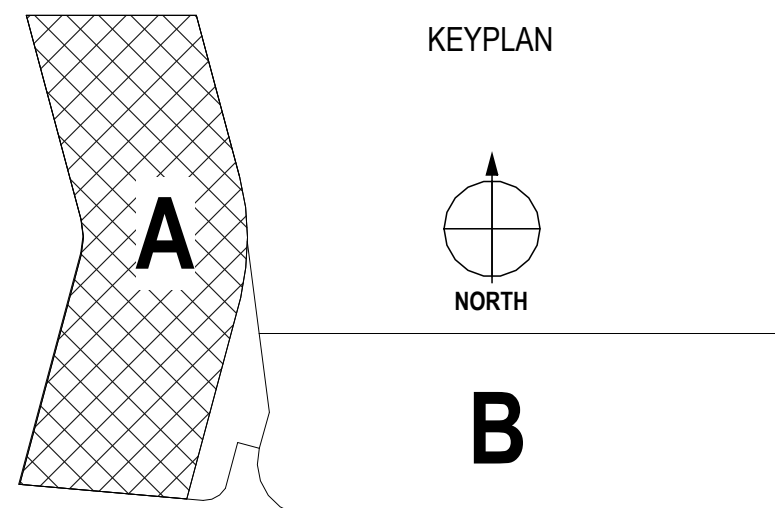
HENDERSON ENGINEERS
5345 LENEXA DRIVE, SUITE 300
LENEXA, KS 66214
TEL 913.742.5000 FAX 913.742.5001
www.hendersonengineers.com

225000100
KS CORPORATE NO. E-325
EXPIRES 12/31/2025



1 TECHNOLOGY - LEVEL 2 PLAN - AREA A
1/8" = 1'-0"

- **TECHNOLOGY PLAN NOTES:**
- E1 4-INCH CONDUIT UP TO LEVEL 5 SWOPE HEALTH TECHNOLOGY CLOSET
 - E31 PROVIDE 1" CONDUIT FOR POWER AND 1" CONDUIT FOR DATA FOR FUTURE I.T.M.
 - E33 COORDINATE MOUNTING HEIGHT OF CAMERA WITH OWNER PRIOR TO ROUGH-IN.
 - E41 PROVIDE CARD READER ROUGH-IN IN PEDESTAL. ROUTE CONDUIT UNDERGROUND BACK TO ACCESSIBLE CEILING SPACE.
 - E47 LOCATE EXTERIOR CAMERA ON UNDERSIDE OF SOFFIT.
 - E49 LOCATE CORNER CAMERAS TO ALLOW FOR VIEW OF EACH ADJACENT ELEVATION.
 - E55 PROVIDE TELECOMMUNICATIONS BACKBOARD FOR SPACE. BACKBOARD SHALL BE 0.75" THICK PLYWOOD. PLYWOOD SHALL BE MOUNTED 6" ABOVE FINISHED FLOOR WITH BEST SIDE TOWARDS ROOM. PLYWOOD SHALL BE A/C GRADE AND FINISHED WITH TWO COATS OF FIRE-RETARDANT PAINT. PLYWOOD SHALL BE MOUNTED TO WALL VIA WALL ANCHORS UTILIZING STAINLESS STEEL HARDWARE.
 - E66 COORDINATE EXACT LOCATION OF KEYPAD WITH OWNER PRIOR TO ROUGH-IN.
 - E83 PROVIDE (1) 1-1/4" UNDERGROUND FROM FREE STANDING DESK TO ACCESSIBLE CEILING FOR DATA. COORDINATE LOCATION WITH FREE STANDING DESK.
 - E96 TWO-WAY COMMUNICATION SYSTEM MASTER CONTROL STATION SHALL BE INSTALLED AT SECURITY DESK. SYSTEM SHALL SUPPORT BOTH AUDIBLE AND VISUAL COMMUNICATION IN COMPLIANCE WITH IBC 2018 SECTION 1009.8. SYSTEM SHALL BE CONNECTED TO OWNER'S NETWORK FOR MONITORING OR 911 COMMUNICATION.
 - E12 COORDINATE LOCATION OF CARD READER, ADA PUSHBUTTON, AND VIDEO INTERCOM WITH LOW VOLTAGE VENDOR PRIOR TO ROUGH-IN. A COMBINATION VIDEO INTERCOM/CR DEVICE IS PREFERRED.



HENDERSON
ENGINEERS
5345 LENEVA DRIVE, SUITE 300
LENEVA, KS 66214
TEL 913.742.5000 FAX 913.742.5001
WWW.HENDERSONENGINEERS.COM

PGAV ARCHITECTS
PICKHAM CLYTON ALBERS & VETS, INC.
4000 Main Street, #1000, Lenexa, KS 66151
913.542.4500
WWW.PGAV.COM

04/04/2025

APRIL L. HALLS
LICENSED
23094
KANSAS
PROFESSIONAL ENGINEER

SK DESIGN GROUP
4000 COLLEGE BOULEVARD, SUITE 100
OVERLAND PARK, KS 66111
913.461.1818
WWW.SKDC.COM

VIREO
414 OAK STREET, SUITE 101
KANSAS CITY, MO 64108
816.766.5850
WWW.VIREODENVER.COM

BOB D. CAMPBELL & CO.
4308 MILLVIEW AVENUE
KANSAS CITY, MO 64111
816.251.4144
WWW.BDC-ENG.COM

HENDERSON ENGINEERS
5345 LENEVA DRIVE, SUITE 300
LENEVA, KS 66214
913.742.5000
WWW.HENDERSONENGINEERS.COM

KANSAS CITY, KANSAS
COMMUNITY EDUCATION, HEALTH & WELLNESS CENTER
KANSAS CITY, KANSAS COMMUNITY EDUCATION, HEALTH & WELLNESS CENTER CONDOMINIUM ASSOCIATION
1101 NORTH 17TH STREET KANSAS CITY, KS 66101

21	03/24/2025	PR-07
16	12/23/2024	ASI-06
15	12/23/2024	PR-04 CACU
5	08/14/2024	Addendum #3
#	DATE	DESCRIPTION

BID PACKAGE #3

Original Size: 11" x 17" Drawing may have been reduced.
0" 1" 2"

**TECHNOLOGY -
LEVEL 2 PLAN -
AREA A**

DATE: 7/26/2024
PGAV: 53664-00 CLIENT #
SHEET #

TN120

 **TECHNOLOGY PLAN NOTES:**

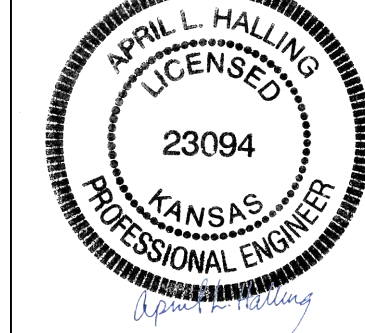
E1 4-INCH CONDUIT UP TO LEVEL 5 SWOPE HEALTH TECHNOLOGY CLOSET

E33 COORDINATE MOUNTING HEIGHT OF CAMERA WITH OWNER PRIOR TO ROUGH-IN.

E95 PROVIDE DATA CONNECTION, RACEWAYS AND BOXES FOR TWO-WAY COMMUNICATION SYSTEM PROVIDED IN ELEVATOR LANDING IN ACCORDANCE WITH THE IBC 1009.8 REQUIREMENTS.



04/04/2025



THE SEAL AND SIGNATURE APPLY ONLY TO THE DOCUMENT TO WHICH THEY ARE AFFIXED, AND EXPRESSLY DISCLAIM ANY RESPONSIBILITY FOR ANY OTHER PLANS, SPECIFICATIONS, ESTIMATES, REPORTS, OR OTHER DOCUMENTS OR INSTRUMENTS RELATING TO OR INTENDED TO BE USED FOR ANY PART OR PARTS OF THE ARCHITECTURAL OR ENGINEERING PROJECT.

SK DESIGN GROUP
4600 COLLEGE BOULEVARD, SUITE 10
OVERLAND PARK, KS 66211

VIREO

414 OAK STREET, SUITE 101
KANSAS CITY, MO 64106
(816) 756-5690
WWW.BEVIREQ.COM

BOB D. CAMPBELL & CO.

4338 BELLEVIEW AVENUE
KANSAS CITY, MO 64111
(816) 531-4144
WWW.BDC-ENGRS.COM

HENDERSON ENGINEERS

8345 LENEXA DRIVE, SUITE 3
LENEXA, KS 66214
(913) 742-5000
WWW.HENDERSONENGINEERING.COM

**KANSAS CITY, KANSAS
COMMUNITY EDUCATION, HEALTH & WELLNESS CENTER**

21	03/24/2025	PR-07
5	08/14/2024	Addendum #3
#	DATE	DESCRIPTION

BID PACKAGE #3

Original Size: 11/12" Drawing may have been reduced.

TECHNOLOGY -
LEVEL 3 PLAN -
AREA A

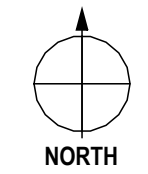
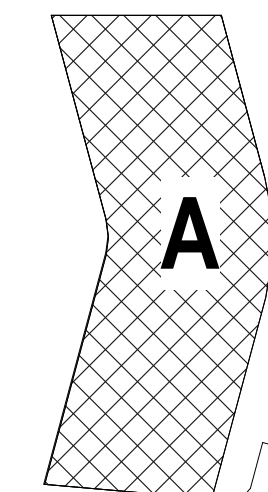
DATE: 7/26/2024

PGAY #	CLIENT #
E2664 00	

33004-00	
SHEET #:	

TN130

KEYPLAN



B



HENDERSON

HENDERSON
ENGINEERS

THE INSTITUTION OF MECHANICAL ENGINEERS

LENEXA, KS 66214
TEL 913.742.6000 FAX 913.742.6001

WWW.HENDERSONENGINEERS.COM

2250005100

KS. CORPORATE NO: E-325
EXPIRES 12/31/2025

① TECHNOLOGY - LEVEL 3 PLAN - AREA A
1/8" = 1'-0"

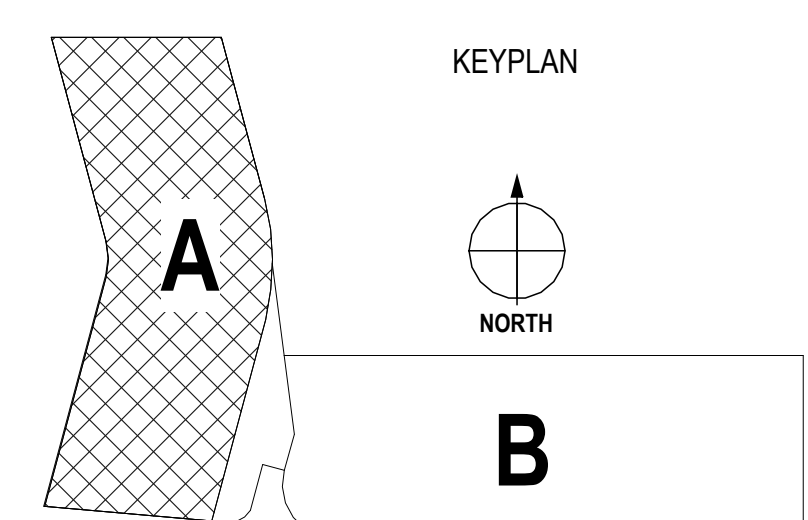
Autodesk Docs://53664-00 KCK Community Education Health and Wellness Center/2250005100 KCK CEHWC_MEP v23.rvt

4/4/2025 2:59:36 PM



① TECHNOLOGY - LEVEL 4 PLAN - AREA A
1/8" = 1'-0"

- **TECHNOLOGY PLAN NOTES:**
- E1 4-INCH CONDUIT UP TO LEVEL 5 SPOHE HEALTH TECHNOLOGY CLOSET
 - E33 COORDINATE MOUNTING HEIGHT OF CAMERA WITH OWNER PRIOR TO ROUGH-IN
 - E95 PROVIDE DATA CONNECTION, RACEWAYS AND BOXES FOR TWO-WAY COMMUNICATION SYSTEM PROVIDED IN ELEVATOR LANDING IN ACCORDANCE WITH THE IBC 1009.8 REQUIREMENTS.



HENDERSON
ENGINEERS
5345 LENEXA DRIVE, SUITE 300
LENEXA, KS 66214
TEL 913.742.5000 FAX 913.742.5001
WWW.HENDERSONENGINEERS.COM

2250005/10
KS CORPORATE NO. E-325
EXPIRES 12/31/2025

21	03/24/2025	PR-07
5	08/14/2024	Addendum #3
#	DATE	DESCRIPTION
BID PACKAGE #3		
Original Size: 11" x 17" Drawing may have been reduced.		
TECHNOLOGY - LEVEL 4 PLAN - AREA A		
DATE	7/26/2024	
PG&V #	53664-00	CLIENT #
SHEET #	TN140	

PG&V ARCHITECTS
PETERHAM GLUTTON ALBERS & VETS, INC.
4000 W. 94th Street, #1000, Lenexa, KS 66157
913.342.6500
www.pgav.com

04/04/2025
APRIL L. HALLS
LICENSED
23094
KANSAS
PROFESSIONAL ENGINEER

THE SEAL AND SIGNATURE APPLY ONLY TO THE DOCUMENT TO WHICH THEY ARE APPLIED. ANY REUSE OF THIS SEAL OR SIGNATURE ON ANY OTHER DOCUMENT IS A VIOLATION OF THE KANSAS PROFESSIONAL ENGINEERING ACT. FOR FURTHER INFORMATION, PLEASE CONTACT THE KANSAS BOARD OF PROFESSIONAL ENGINEERS.

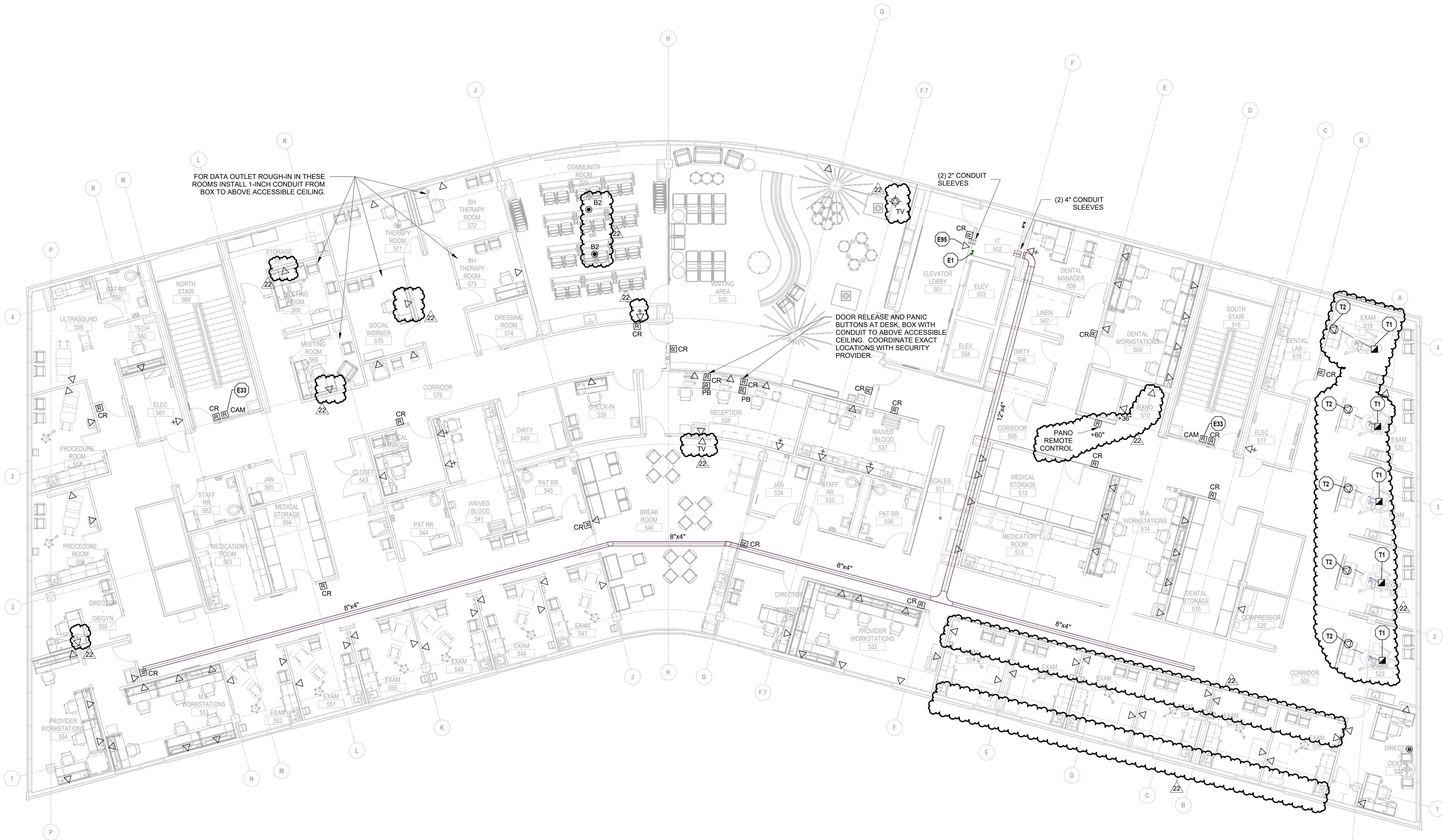
SK DESIGN GROUP
4800 COLLEGE BOULEVARD, SUITE 100
OVERLAND PARK, KS 66111
WWW.SKDC.COM

VIREO
414 OAK STREET, SUITE 101
KANSAS CITY, MO 64108
(816) 755-5555
WWW.VIREO.COM

BOB D. CAMPBELL & CO.
4308 WILLOW AVENUE
KANSAS CITY, MO 64111
(816) 351-4144
WWW.BDC-ENG.COM

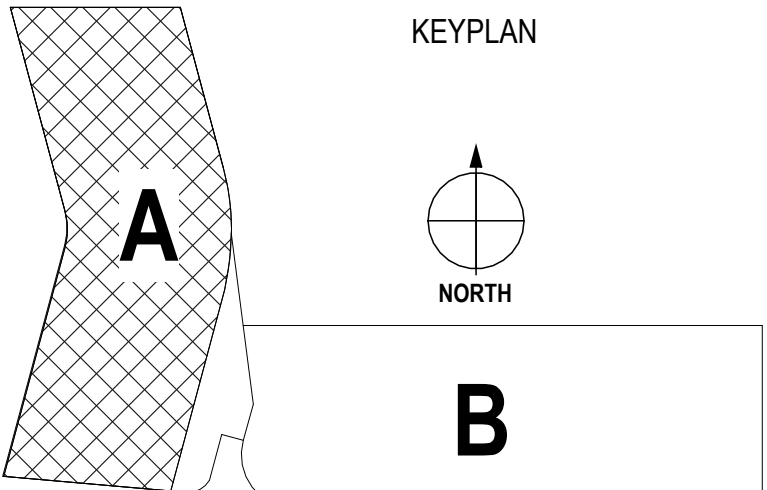
HENDERSON ENGINEERS
8345 LENEXA DRIVE, SUITE 300
LENEXA, KS 66214
(913) 742-5000
WWW.HENDERSONENGINEERS.COM

KANSAS CITY, KANSAS
COMMUNITY EDUCATION, HEALTH & WELLNESS CENTER
KANSAS CITY, KANSAS COMMUNITY EDUCATION, HEALTH & WELLNESS CENTER CONDOMINIUM ASSOCIATION
1101 NORTH 17TH STREET KANSAS CITY, KS 66101



1 TECHNOLOGY - LEVEL 5 PLAN - AREA A
1/8" = 1'-0"

- **TECHNOLOGY PLAN NOTES:**
- E1 4-INCH CONDUIT UP TO LEVEL 5 SWOPE HEALTH TECHNOLOGY CLOSET
- E33 COORDINATE MOUNTING HEIGHT OF CAMERA WITH OWNER PRIOR TO ROUGH-IN
- E95 PROVIDE DATA CONNECTION, RACEWAYS AND BOXES FOR TWO-WAY COMMUNICATION SYSTEM PROVIDED IN ELEVATOR LANDING IN ACCORDANCE WITH THE IBC 1009.8 REQUIREMENTS
- T1 INSTALL 2-INCH CONDUIT FROM 12-O'CLOCK BASE CABINET BELOW FLOOR TO DENTAL CHAIR BASE. CONFIRM EXACT LOCATION WITH DENTAL INSTALLATION DRAWINGS.
- T2 INSTALL BOX FOR OWNER PROVIDED LOW VOLTAGE CABLING ON FLOOR IN CABINET TOE-KICK. INSTALL 0.75" CONDUIT ON FLOOR FROM BOX AND ROUTE UP IN WALL TO ABOVE ACCESSIBLE CEILING.



HENDERSON
ENGINEERS
5345 LENEXA DRIVE, SUITE 300
LENEXA, KS 66214
TEL 913.742.5000 FAX 913.742.5001
WWW.HENDERSONENGINEERS.COM

22	05/12/2025	PR-08-SWOPE
5	08/14/2024	Addendum #3
#	DATE	DESCRIPTION
BID PACKAGE #3		
Original Size: 11"12" Drawing may have been reduced		
1" = 1'		
TECHNOLOGY - LEVEL 5 PLAN - AREA A		
DATE	7/26/2024	
PG&V #	53664-00	CLIENT #
SHEET #	2250003/10	
TN150		
KS. CORPORATE NO. E-325 EXPIRES 12/31/2025		

PG&V ARCHITECTS
PETERHAM GLYNN ALBERS & VETS, INC.
4000 Main Street, #1000, Lenexa, KS 66215
913.342.4500
www.pgav.com

5/15/2025
APRIL L. HALLING
LICENSED
23094
PROFESSIONAL ENGINEER
KANSAS

SK DESIGN GROUP
4000 COLLEGE BOULEVARD, SUITE 100
OVERLAND PARK, KS 66211
913.451.1818
WWW.SKDC.COM

VIREO
414 OAK STREET, SUITE 101
KANSAS CITY, MO 64108
816.795.5850
WWW.VIREOENG.COM

BOB D. CAMPBELL & CO.
4308 MILLVIEW AVENUE
KANSAS CITY, MO 64111
816.251.4144
WWW.BDC-ENGERS.COM

HENDERSON ENGINEERS
5345 LENEXA DRIVE, SUITE 300
LENEXA, KS 66214
913.742.5000
WWW.HENDERSONENGINEERS.COM

KANSAS CITY, KANSAS
COMMUNITY EDUCATION, HEALTH & WELLNESS CENTER
KANSAS CITY, KANSAS COMMUNITY EDUCATION, HEALTH & WELLNESS CENTER CONDOMINIUM ASSOCIATION
1101 NORTH 7TH STREET KANSAS CITY, KS 66101

