



707 Minnesota Ave, Suite 506
Kansas City, KS 66101
p. 913.287.1900
wskfarch.com

ADDENDUM

Addendum No.: **ONE (001)**
Project: KCKCC Field House Addition

Project No.: 22060A
Date: October 16, 2023

This Addendum is issued to all registered plan holders pursuant to the Instructions to Bidders and Conditions of the Contract. This Addendum serves to clarify, revise, and supersede information in the Project Manual, Drawings, and previously issued Addenda. Portions of the Addendum affecting the Contract Documents will be incorporated into the Contract by enumeration of the Addendum in the Owner/Contractor Agreement.

The Bidder shall acknowledge receipt of this Addendum in the appropriate space on the Bid Form.

1. **SPECIFICATIONS**

A. SECTION 002113 – INSTRUCTIONS TO BIDDERS

- i. Under Site Assessment, 4.02 Pre-Bid Conference, A.
 - 1. The location of the Pre-Bid Conference will be the Field House Lobby - 7250 State Ave., Kansas City, KS 66112.

2. **DRAWINGS**

A. Cover Sheet

- i. Remove 'MPE0.1, MEP Specifications' from the Drawing List.

B. Sheet A0.01 (example)

- i. Information provided in Code Review Information was updated.

3. **GENERAL**

- A. None at this time.

4. **APPROVED EQUALS**

NOTE: Adding a product/manufacture to the approved equals list does not remove the product's responsibility in meeting the specification. All products MUST meet specification.

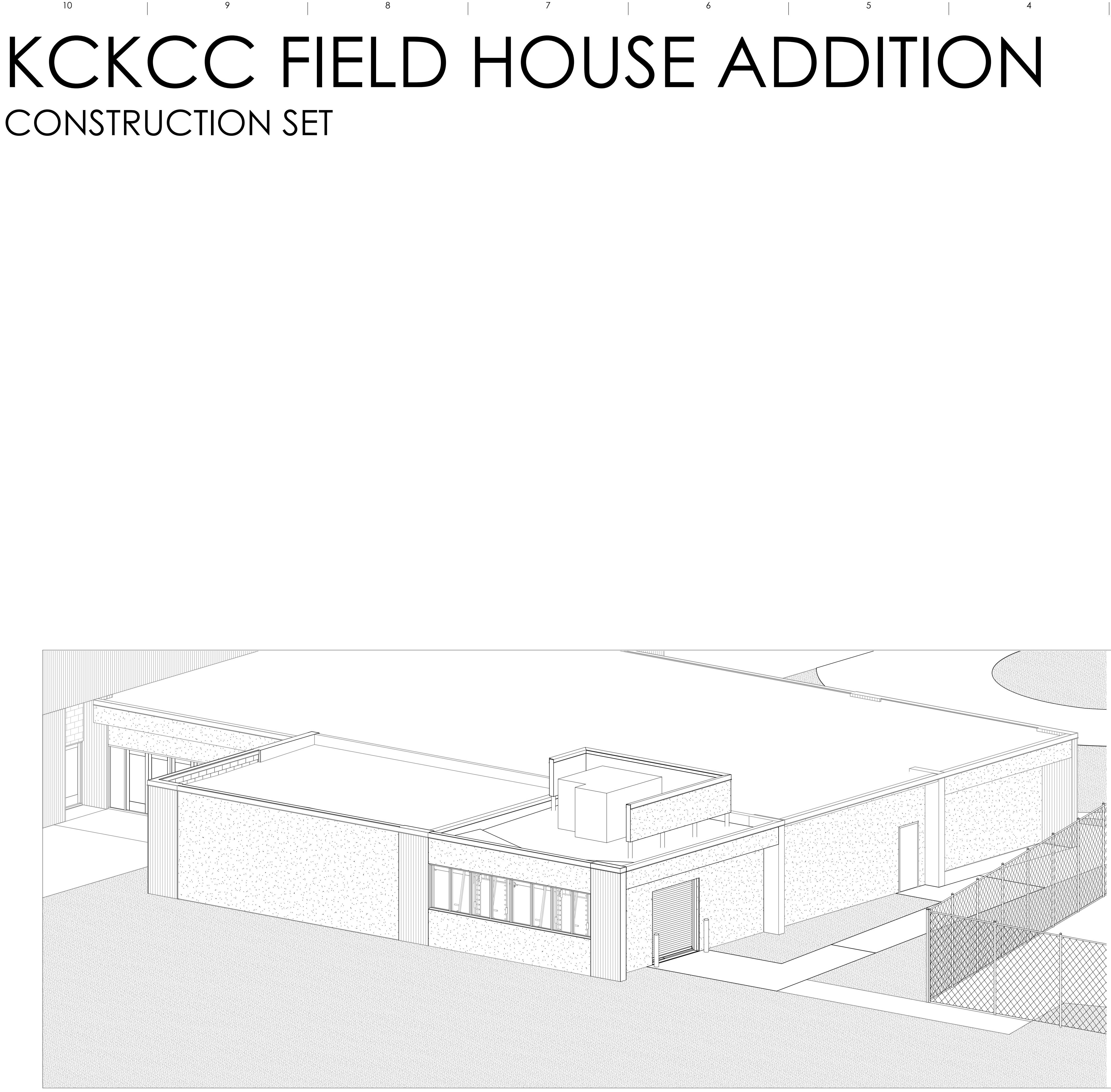
- A. None at this time.

ATTACHMENTS:

DRAWINGS: Cover Sheet, A0.01

10/13/2023 1:33:05 PM
\\WSKF53\Drawings\2022\22060 - KCKCC On-Call Services\22060A_KCKCC Field House Addition\CENTRAL.rvt

H
G
F
E
D
C
B
A



KCKCC FIELD HOUSE ADDITION

CONSTRUCTION SET

DRAWING LIST

3 - ARCHITECTURE	
A0.00	COVER
A0.01	CODE REVIEW
D1.01	DEMO PLANS
SP1.01	SITE PLAN
A1.01	FLOOR PLAN & REFLECTED CEILING PLAN
A1.02	ROOF PLAN
A2.01	ELEVATIONS
A2.02	BUILDING SECTIONS
A3.01	WALL SECTIONS & DETAILS
A4.01	INTERIOR ELEVATIONS
A6.01	DOOR SCHEDULE
A7.01	FINISH SCHEDULE
4 - STRUCTURAL	
S0.01	GENERAL NOTES
S0.02	CMU DETAILS
S1.01	STRUCTURAL PLANS
S2.01	SECTIONS
S2.02	SECTIONS
5 - MECHANICAL, PLUMBING & ELECTRICAL	
MEP 0.0	MECHANICAL COVER SHEET
MEP 1.0	MEP DEMOLITION PLAN
M1.0	MECHANICAL PLANS
E1.0	ELECTRICAL PLANS
E2.0	ELECTRICAL SCHEDULES AND DETAILS



SYMBOLS

Detail Number		SIM
Detail Section		
Sheet Number		
Detail Number		SIM
Building Section		
Sheet Number		
Detail Number		SIM
Callout		
Sheet Number		
Detail Number		
Elevation		
Sheet Number		
Room Name		
Room Designation		
Room Number		
Door Number		
Wall Type		
Window Designation		
Keynote Designation		
Spot Elevation		
Revision Symbol		



Structural Engineer
Bob, D. Campbell & Co.
State Certificate of Authority
#000442
4338 Bellevue
Kansas City, MO 64111
816-531-4144

MEP Engineer
PKMR Engineers, LLC
State Certificate of Authority
#E-2002020886
13300 W. 98th Street
Lenexa, KS 66215
913-342-2400

JOB NUMBER 22060A

KCKCC FIELD HOUSE ADDITION

7250 STATE AVE.
KANSAS CITY, KS 66112

KCKCC
707 Minnesota Ave., Suite 504 Kansas City, Kansas 64101 Tel. 913.287.1900



ISSUE DATE	10 / 04 / 23
No. Description	Date
1 ADDENDUM #1	10/13/2023

I HEREBY CERTIFY THAT THE DOCUMENTS INTENDED TO BE AUTHENTICATED BY MY SEAL ARE LIMITED TO THE COVER AND THOSE SHEETS LISTED UNDER THE ARCHITECTURAL HEADER OF THE DRAWING LIST. I HEREBY DISCLAIM RESPONSIBILITY FOR ALL OTHER PLANS, SPECIFICATIONS, ESTIMATES, REPORTS, OR OTHER DOCUMENTS OR INSTRUMENTS RELATING TO OR INTENDED TO BE USED FOR ANY PART OF PARTS OF THE ARCHITECTURAL OR ENGINEERING PROJECT.

PRINCIPAL

10/13/23
DATE

KANSAS LICENSE NO. #7647

COVER

A0.00

WSKF, Inc. © 2023

10 9 8 7 6 5 4 3 2 1

H

G

F

E

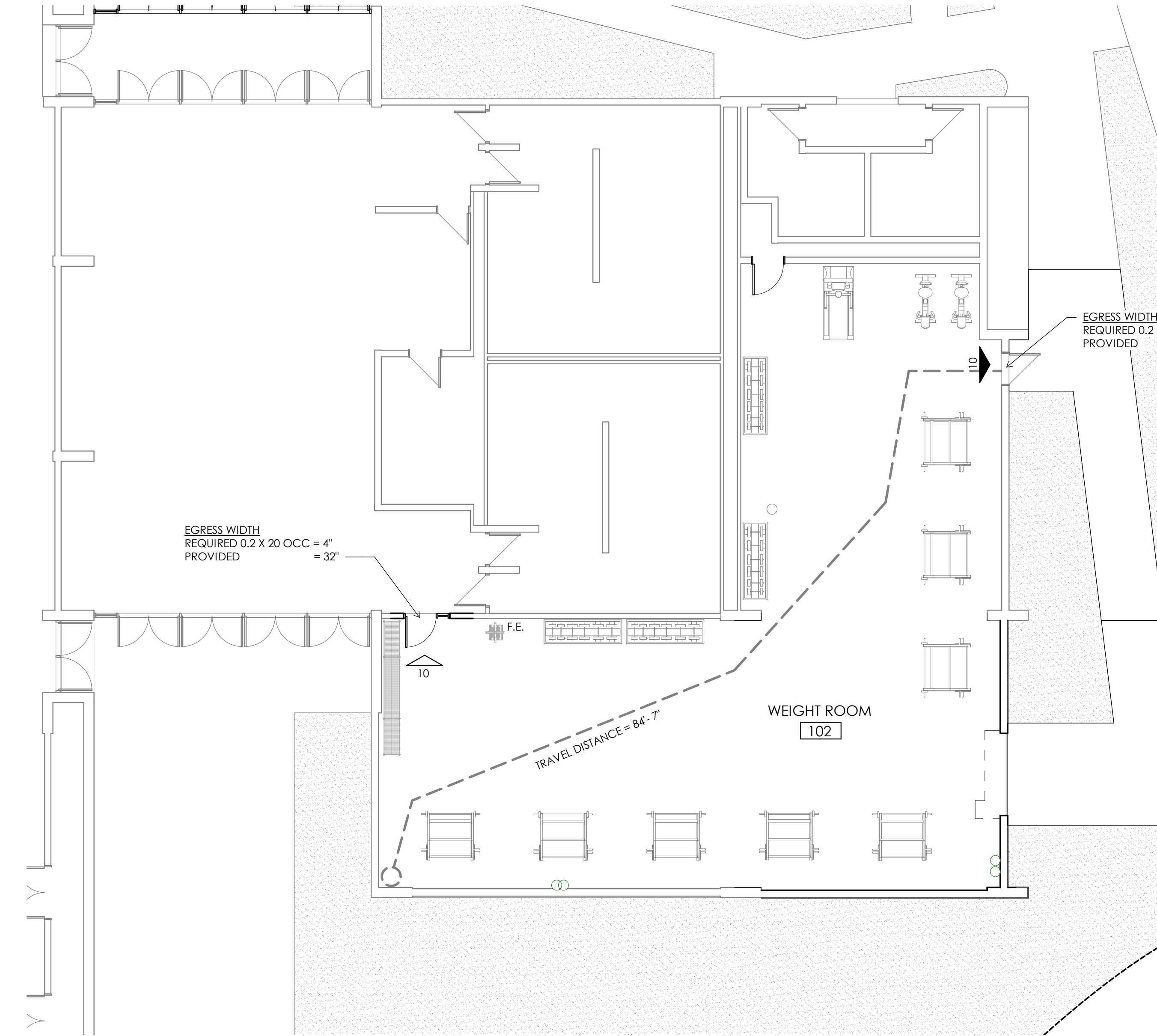
D

C

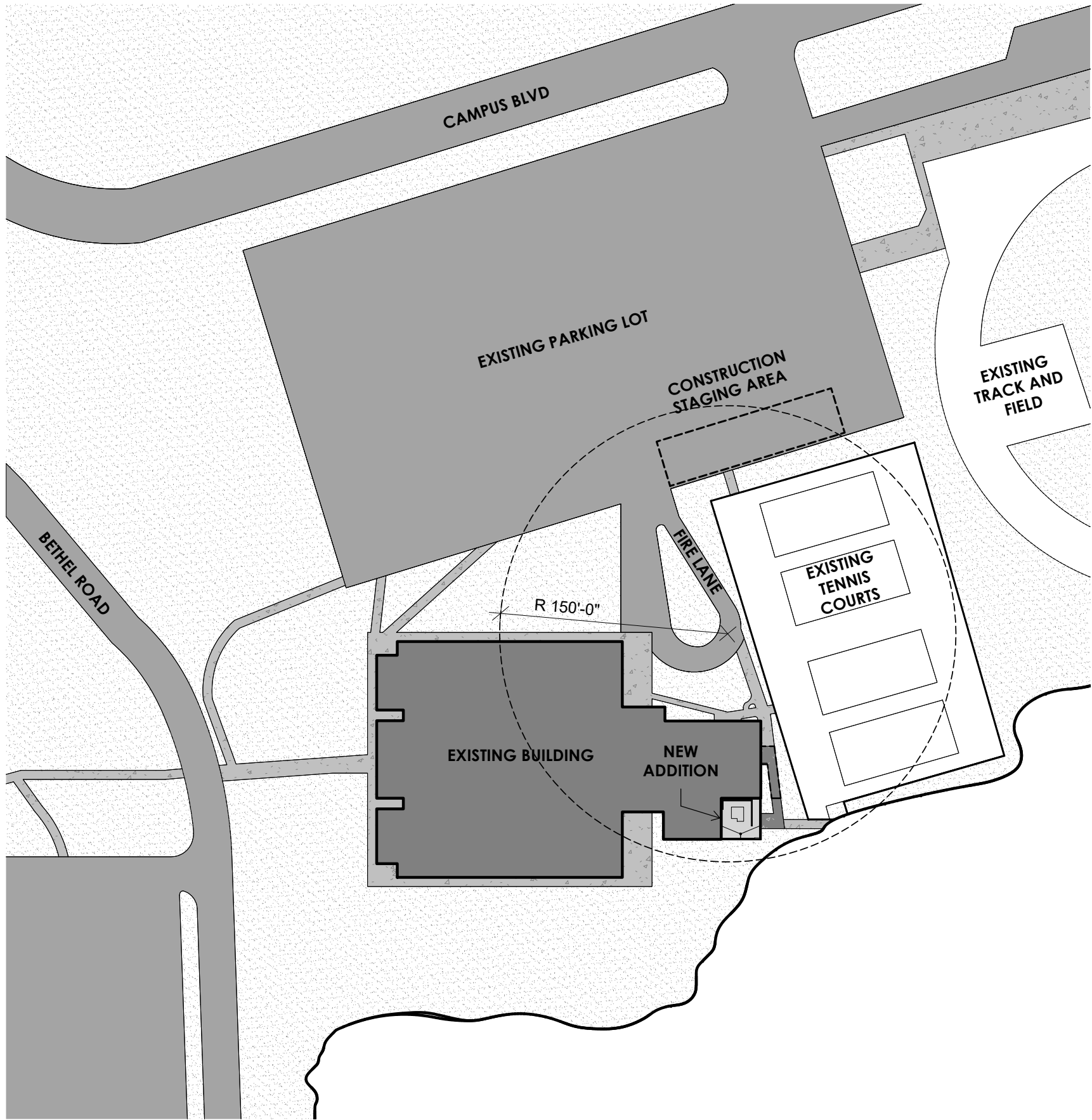
B

A

10/13/2023 1:35:16 PM
\\WSKF53\Drawings\2022\2260A - KCKCC On-Call Services\2260A_KCKCC Field House Addition\Central.rvt



A8 CODE PLAN
1/8" = 1'-0"



A5 SITE CODE PLAN
1" = 80'-0"

NOTE: EXACT SIZING OF THE CONSTRUCTION STAGING AREA CAN BE WORKED THROUGH WITH KCKCC AFTER BID HAS BEEN AWARDED

LEGEND	ADOPTED CODES
<div><div><div><div><div></div><div>15</div></div><div>DIRECTION OF TRAVEL</div></div><div><div><div></div><div>15</div></div><div>COMBINED OCCUPANCY LOAD</div></div><div><div><div></div><div>15</div></div><div>DIRECTION OF TRAVEL</div></div><div><div><div></div><div>15</div></div><div>ROOM OCCUPANCY LOAD</div></div><div><div><div></div><div>15</div></div><div>F.E. FIRE EXTINGUISHER & BRACKET</div></div><div><div><div></div><div>15</div></div><div>F.E.C. FIRE EXTINGUISHER & CABINET</div></div></div></div>	<div>KANSAS CITY, KANSAS</div> <div>2018 INTERNATIONAL BUILDING CODE 2018 INTERNATIONAL PLUMBING CODE 2018 INTERNATIONAL MECHANICAL CODE 2018 INTERNATIONAL FUEL GAS CODE 2017 NATIONAL ELECTRICAL CODE 2018 INTERNATIONAL FIRE CODE 2018 INTERNATIONAL ENERGY CONSERVATION CODE 2017 ANSI A117.1 2014 ICC 500</div>
ENERGY EFFICIENCY TABLE	CODE REVIEW INFORMATION
<div><div><div>ZONE</div><div>4A</div></div><div><div><div>OPAQUE THERMAL ENVELOPE</div><div>ROOF</div><div>INSULATION ABOVE DECK - R-30ci (U0.032/U0.021)</div></div><div><div><div>WALLS, ABOVE GRADE</div><div>MASS - R-9.5ci (U-0.104)</div></div><div><div><div>WALLS, BELOW GRADE</div><div>R-7.5ci (C- 0.119)</div></div><div><div><div>UNHEATED SLABS</div><div>R-10 FOR 24" BELOW</div></div><div><div><div>OPAQUE DOORS</div><div>NON SWINGING - R-4.75</div></div><div><div><div>VERTICAL FENESTRATION</div><div>ENTRANCE DOOR</div><div>U-0.77 (R-1.3)</div></div><div><div><div>FIXED FENESTRATION</div><div>U-0.36 (R-2.63)</div></div><div><div><div>OPERABLE FENESTRATION</div><div>U-0.43 (R-2.23)</div></div></div></div></div></div></div></div></div></div></div>	<div><div><div>CONSTRUCTION TYPE</div><div>I-B (A-4 EXISTING BUILDING) IIB (A-3 EXISTING BUILDING + NEW ADDITION)</div></div><div><div><div>USE AND OCCUPANCY</div><div>A-3 - 20 OCCUPANTS (ACTUAL OCCUPANT LOAD CALCULATED BASED OFF OF WEIGHT ROOM EQUIPMENT)</div></div><div><div><div>OCCUPANCY COUNT CALCULATION</div><div>REFER TO ROOM OCCUPANCY SCHEDULE & CODE PLAN</div><div>TOTAL OCCUPANCY: 20 OCCUPANTS</div></div><div><div><div>BUILDING HEIGHT (PER TABLE 504.3 & 504.4)</div><div>A-4 ALLOWABLE 11 STORIES</div><div>ACTUAL 1 STORY (13 FT) + PARTIAL LOWER LEVEL</div></div><div><div><div>BUILDING AREA (PER TABLE 504.2)</div><div>OVERALL BUILDING [A-4] ALLOWABLE: UNLIMITED</div><div>ACTUAL FIRST FLOOR: 27,456 SF</div><div>LOWER LEVEL: 11,671 SF</div><div>(A-3) ACTUAL: 1,984 SF</div><div>(A-3) NEW ADDITION: 693 SF</div><div>41,804 SF</div></div><div><div><div>NEW ADDITION IS AN INCREASE OF 1.66% TO THE OVERALL BLDG SF</div></div><div><div><div>MIXED USE AND OCCUPANCY</div><div>SEPARATED OCCUPANCIES (PER TABLE 508.4)</div><div>A-3 ACCESSORY TO A-4</div></div><div><div><div>REQUIRED EGRESS</div><div>TOTAL EGRESS WIDTH PROVIDED</div><div>SEE CODE PLAN FOR WIDTHS AT EACH EXIT</div></div><div><div><div>TOTAL EXITS PROVIDED (PER TABLE 1006.3.2)</div><div>REQUIRED 2</div><div>PROVIDED 2</div></div><div><div><div>MAX TRAVEL DISTANCE (PER TABLE 1017.2)</div><div>REQUIRED 200 FT</div><div>PROVIDED 85 FT</div></div><div><div><div>CHAPTER 6 TYPE OF CONSTRUCTION</div><div>FIRE RESISTANCE REQUIREMENTS (TABLE 601)</div><div>STRUCTURAL FRAME 0 HR</div><div>EXTERIOR BEARING WALLS 0 HR</div><div>INTERIOR BEARING WALLS 0 HR</div><div>INTERIOR NON-BEARING WALLS 0 HR</div><div>FLOOR CONSTRUCTION 0 HR</div><div>ROOF CONSTRUCTION 0 HR</div></div><div><div><div>CHAPTER 8 INTERIOR FINISHES</div><div>FINISH REQUIREMENTS BY OCCUPANCY (TABLE 803.13)</div><div>ROOMS AND ENCLOSED SPACE - C</div></div><div><div><div>CHAPTER 9 FIRE PROTECTION SYSTEMS</div><div>PORTABLE FIRE EXTINGUISHERS</div><div>MAX TRAVEL DISTANCE 75 FT</div></div><div><div><div>CHAPTER 29 PLUMBING SYSTEMS</div><div>FIXTURE REQUIREMENTS (TABLE 2902.1)</div><div>A-3 OCCUPANCY = 20</div><div>WATER CLOSETS REQUIRED</div><div>X OCC = 20 OCC / 2 = 10 OCC</div><div>MEN = 1/75 = 10/75 = 0.25 WC</div><div>WOMEN = 1/40 = 10/40 = 0.25 WC</div><div>WATER CLOSETS PROVIDED</div><div>MEN = 00 WC</div><div>WOMEN = 00 WC</div><div>LAVATORIES REQUIRED</div><div>X OCC = 20 OCC / 2 = 25 OCC</div><div>MEN = 10/200 = 10/200 = 0.05 LAV</div><div>WOMEN = 10/150 = 10/150 = 0.05 LAV</div><div>LAVATORIES PROVIDED</div><div>MEN = 00 LAV</div><div>WOMEN = 00 LAV</div><div>DRINKING FOUNTAINS REQUIRED</div><div>X OCC = 20 OCC</div><div>1/1000 = 20/1000 = 1 DF</div><div>DRINKING FOUNTAINS PROVIDED</div><div>TOTAL = 0 DF (EXISTING DRINKING FOUNTAIN SERVES AREA)</div><div>SERVICE SINK REQUIRED</div><div>20 OCC = 1 SERVICE SINK</div><div>SERVICE SINK PROVIDED</div><div>TOTAL = 1 SERVICE SINK (EXISTING SERVICE SINK SERVES AREA)</div></div></div></div></div></div></div></div></div></div></div></div></div></div></div></div>



Structural Engineer
Bob. D. Campbell & Co.
State Certificate of Authority
#000442
4338 Bellevue
Kansas City, MO 64111
816-531-4144

MEP Engineer
PKMR Engineers, LLC
State Certificate of Authority
#E-2002020886
13300 W. 98th Street
Lenexa, KS 66215
913-342-2400

JOB NUMBER 22060A

KCKCC FIELD HOUSE ADDITION

7250 STATE AVE.
KANSAS CITY, KS 66112

KCKCC
707 Minnesota Ave., Suite 504 Kansas City, Kansas 64101 Tel. 913.287.1900



ISSUE DATE	10 / 04 / 23
No. Description	Date
1 ADDENDUM #1	10/13/2023

WSKF, Inc. © 2023

CODE REVIEW

A0.01