



Kansas City Kansas
Community College™

BLUE DEVILS STUDENT COMEBACK PLAN

January 4, 2021

I WELCOME TO SPRING 2021 SEMESTER BLUE DEVILS!

Kansas City Kansas Community College has been working diligently to respond to, and plan for, the changes to the health and safety of our campus community. The Spring 2021 Blue Devils Student Comeback Plan provides an update of what to expect this semester.

KCKCC's Blue Devils Student Comeback Plan is guided by information collected from several organizations with expertise in the field of disease control and public health preparedness. The ensuing comprehensive plan is provided as a guide of best practices and contains requirements KCKCC is implementing to help ensure the health and well-being of our entire college community.

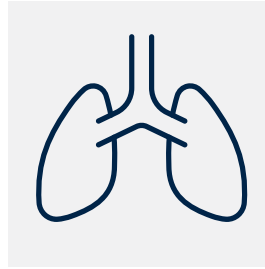
This plan begins **January 4, 2021** and be in effect for the Spring 2021 semester which ends May 1, 2021. The plan will be amended as needed and as new information becomes available. On-going announcements and more details will be posted at the [KCKCC COVID-19](#) website.



Fever



Cough



Shortness of breath



Sore throat



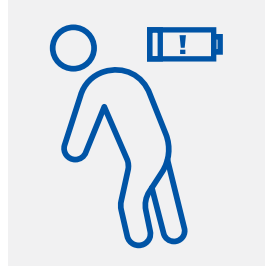
Headache



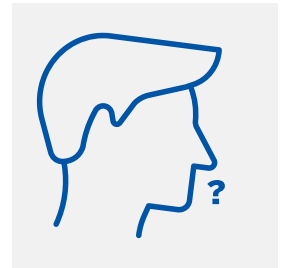
Chills



Body ache



Fatigue (tiredness)

Nausea/vomiting/
diarrheaNew Loss of taste
or smell

I Symptoms of COVID-19



COVID-19 symptoms include but not limited to, fever or chills, cough, shortness of breath or difficulty breathing, sore throat, congestion or runny nose, headache, muscle or body aches, fatigue (tiredness), nausea or vomiting, diarrhea, and loss of taste or smell. If you are feeling sick or have symptoms, **do not come to campus.**

Students with COVID-19 symptoms should seek medical advice and notify the KCKCC Student Health Services Office at nurse@kckcc.edu or 913-288-7683.

Remember: You May Be Able to Spread the Virus Even without Symptoms. Local Health Officials remind residents that asymptomatic spread may be possible, and that safety precautions should be taken even if you do not have symptoms.

When to Seek Emergency Medical Attention: Look for emergency warning signs* for COVID-19. If someone is showing any of these signs, seek emergency medical care immediately.

- ▶ Trouble breathing
- ▶ Persistent pain or pressure in the chest
- ▶ New confusion

- ▶ Inability to wake or stay awake
- ▶ Bluish lips or face

*This list is not all possible symptoms. Please call your medical provider for any other symptoms that are severe or concerning to you.

I Health & Safety



Facilities and Operations

Physical modifications have been made to the buildings, including frequent cleaning & disinfecting, hand sanitizing stations, clear barriers, and physical distancing reminders.

Enhanced cleanings of all common areas and classrooms will be performed twice daily. Frequently touch surfaces including (door handles, hard surfaces, tables, chairs, etc.) will receive additional sanitizing throughout the day. High traffic, common and frequented areas will be disinfected nightly by means of electrostatic sanitizing equipment. All restrooms will be cleaned and disinfected a minimum of twice daily.

Additional cleaning supplies will be available for students and instructors to clean learning spaces after use. Sanitation stations, including hand sanitizer, disinfectant wipes and other items will be placed throughout KCKCC facilities.

When there is adequate negative pressure to do so, the main entry doors to multi-stall restrooms will be left open. Where restroom doors cannot be kept open, individuals should use a paper towel to open the door after drying hands and place the towel in a trash receptacle that will be next to the door. Restrooms have hand sanitizer dispensers next to the door. Individuals are encouraged to sanitize hands after opening the restroom door as an option to using paper towels. Hand air dryers will be taped off and should not be used.

Drinking fountains at all locations will be taped off and disabled. The water bottle filling capability at these stations will remain available. Individuals are encouraged to fill personal water bottles and/or bring personal beverage.

HVAC systems in college offices, rooms and spaces will be operated to best provide available ventilation for all areas. Where possible, office doors should remain open to provide additional ventilation as well as reduce the frequency of touches on door handles. Auxiliary fans have been removed from classrooms and common areas to prevent air from being blown directly on individuals.

How to clean and disinfect. <https://www.cdc.gov/coronavirus/2019-ncov/community/disinfecting-building-facility.html>

Masks/Face Coverings

In compliance with the [Wyandotte County Local Health Order LHO 6/27/20](#), all businesses or organizations in Kansas must require all employees, customers, visitors, members, or members of the public to appropriately wear a mask or other face covering. Following new guidance from Wyandotte County Health Department, the use of bandanas and gator-type face coverings are strongly discouraged.

Students, employees, visitors, and vendors are required to wear a mask or face covering that covers their mouth and nose while in buildings owned and/or operated by the college. Any person not wearing a face covering or abiding to physical distancing requirements will be asked to leave the facility.

Masks must be worn while outdoors in public spaces and unable to maintain a 6-foot distance between individuals (not including individuals who reside together) with only infrequent or incidental moments of closer proximity.

*Masks/Face coverings will be available at the main front desk of most departments for guests that do not have a face covering based on availability.

It is important to wear a mask or cloth face covering appropriately:

- ▶ This means that it must cover both your **mouth and nose**.
- ▶ Do your best not touch your mask or your face. If you need to adjust your mask, clean your hands with soap and water or hand sanitizer before and after touching your mask.
- ▶ Wash mask in soap or detergent preferably with hot water at least once a day.
- ▶ Cloth face coverings that you can make with items around your home are effective at helping reduce the spread of COVID-19. You do not need a surgical mask or other medical-grade mask, and it is best to reserve those supplies for healthcare workers.
- ▶ The primary purpose of mask is to protect others in case you may be carrying the virus, even if you don't have symptoms.

*If we all wear masks, we are all helping protect one another, and especially protect those most vulnerable to serious illness.

Cloth Face Coverings. <https://www.cdc.gov/coronavirus/2019-ncov/prevent-getting-sick/how-to-wear-cloth-face-coverings.html>

Using Personal Protective Equipment. <https://www.cdc.gov/coronavirus/2019-ncov/hcp/using-ppe.html>



Physical Distancing

While on campus, all employees, students and guests must maintain a 6-foot physical distance from others as much as possible. Workspaces, including student classroom spaces and shared employee offices, should be adjusted to maintain 6-feet of distance. Plexiglass barriers will remain in place for front-line staff where the primary function is greeting or routing students and guests.

Physical Distancing <https://www.cdc.gov/coronavirus/2019-ncov/prevent-getting-sick/social-distancing.html>



Health Assessments

We ask all students, employees, and visitors to help protect others by completing their own daily self-assessment before coming on campus.

Individuals who tested positive for COVID-19, have COVID-19 symptoms, or were in close contact with a COVID-19 infected individual, should NOT come to campus and should contact the KCKCC Student Health Services Office at nurse@kckcc.edu or 913-288-7683.

Updated guidance from KDHE effective December 14, 2021: <https://www.coronavirus.kdheks.gov/DocumentCenter/View/1380/Guidance-for-Reopening-Colleges-and-Universities-PDF---12-14-2020?bidId=>

A Person Under Investigation (PUI) is someone who is suspected of having COVID-19 disease. A person who is being tested for COVID-19 is required to be in isolation until test results are received. Possible outcomes of the test result include:

- ▶ If the test result is positive, then the person becomes a case or
- ▶ If the test result is negative and the person has a known exposure, then the person must finish their quarantine period, or
- ▶ If the test result is negative and there was no known exposure, then the person is released from isolation.

COVID-19 Positive with Symptoms

In compliance with COVID-19 isolation guidance from the Unified Government Public Health Department, sick or symptomatic individual's must self-isolate. You can return to work/school:

10 days from the onset of symptoms OR they are fever free for 72 hours, without medication that reduces fever AND other symptoms. Whichever is longer. Re-testing is not required to return to work/school.

COVID-19 Positive, but Had No Symptoms (asymptomatic)

Individuals who tested positive, but continue to have no symptoms, should **NOT** come to campus and should contact the KCKCC Student Health Services Office at nurse@kckcc.edu or 913-288-7683. The infected individual can return to work/school:

If the case is asymptomatic, then they should stay home for 10 days since the day their sample was taken. If they develop symptoms during this 10-day period, then they would begin a new isolation period as described above for symptomatic cases.

COVID-19 Close Contact

HR and the College Nurse will make recommendations to individuals identified as close contacts based on the current Wyandotte County Guidelines:

Close contact is "anyone who was confirmed to be within 6-feet of an infected individual (a case) for at least 10 minutes (with or without a face covering) or had contact with bodily secretions (for example, being sneezed or coughed on) from a case, while the case is infectious." Anyone who was confirmed as a close contact should be considered exposed to COVID-19 and should self-isolate for 14 days after exposure AND get tested for COVID-19, 7-9 days after they were exposed.

No action is required for individuals who were NOT within 6-feet of an infected person for at least 10 minutes. Individuals can get tested for COVID-19 if they choose to do so, but it is not required.

In efforts to prevent potential spread, the Student Health Services Office and Human Resources Department will start the case investigation and contact tracing process by identifying potential employees and/or students who were in close contact with the infected individual while maintaining confidentiality related to the individual's identity and condition as required by the

Americans with Disabilities Act (ADA).

COVID-19 Symptoms (mild, non-life threatening symptoms) with a Negative Test

Students that are exhibiting mild symptoms should stay home and contact the KCKCC Student Health Services Office at nurse@kckcc.edu or 913-288-7683.

Students with mild symptoms (non-life threatening), who received a negative COVID-19 test result, and it is determined there was no known exposure may return to campus/class 72 hours after being symptom and fever free. Students that do not have a negative test result, have 2 or more symptoms and no known exposure will need to self-isolate for 10 days past symptom onset or 72 hours, whichever is longest.

Testing Sites

Wyandotte County Symptoms and Testing Information. COVID-19 can be confirmed by lab testing, which is available at multiple locations in Wyandotte County. Testing is available for free to people who live or work in Wyandotte County at multiple community locations, including the UGPHD and at the old K-Mart building on State Ave.

- ▶ [Leavenworth County Testing Information](#)
- ▶ [Johnson County Testing Information](#)



Prevention Hygiene

Practice regular handwashing and use hand sanitizing stations when soap and water are not available. Avoid touching your face, eyes, or nose. Cough and sneeze into your elbow to help protect others.

Hand Washing. <https://www.cdc.gov/handwashing/hand-sanitizer-use.html>

Elevators

KCKCC's custodial team will regularly clean and sanitize frequently touched surfaces such as buttons outside and inside elevator cars. When considering the use of an elevator, the cautions below should be observed:

- ▶ Avoid use if possible;
- ▶ Maintain physical distancing in elevators as much as possible;
- ▶ Avoid overcrowding;
- ▶ Take the stairs or wait for the next elevator;

- ▶ Limit the number of people getting into the elevator at the same time;
- ▶ Consider only riding the elevator with own party or alone;
- ▶ When possible, use your elbow, or another object, like a pencil, to push the elevator buttons
- ▶ Wash your hands or use hand sanitizer after riding an elevator;
- ▶ The Centers for Disease Control & Prevention (CDC) recommends covering your mouth and nose with a cloth face covering when in public. To maintain safety, consider an elevator a public space and cover your mouth and nose when riding;
- ▶ Follow all general hygiene tips, such as coughing into your elbows and not your hands;
- ▶ Avoid touching your face after pushing the button.

Travel

Check the [Kansas Department of Health and Environment \(KDHE\)](#) website regularly. Students who traveled to any of the locations on the KDHE list may need to self-isolate upon arrival in Kansas. Student who traveled to any location on the list need to notify the KCKCC Student Health Services Office at 913-288-7683 or nurse@kckcc.edu prior to returning to campus.

Precautions If You Must Travel

Travel increases your chances of getting and spreading COVID-19. If you must travel, make sure you are aware of and adhere to restrictions for your destination and place of return. Within the United States, check the [state and territorial health department websites](#) for the latest information. During travel, take the appropriate precautions to protect yourself and others:

- ▶ Wash your hands often with warm soap and water for at least 20 seconds. If you can't wash your hands, use an alcohol-based hand sanitizer;
- ▶ Avoid touching your eyes, nose, and mouth;
- ▶ Remain at least six feet from others;
- ▶ Wear a cloth face covering;
- ▶ If you develop symptoms during or after travel, notify your Primary Care Provider and the Student Health Services Office.

I Academic Calendar



Classes

We are excited to welcome students back this spring semester starting January 19, 2021. Given the current environment that the COVID-19 pandemic has created, KCKCC will be offering classes in four ways for the coming semester:

Face-to-Face

Approximately 30 percent of courses this spring will be offered face-to-face at one of KCKCC's physical locations. The college is taking extra precautions to help ensure the safety of both students and employees, including reducing face-to-face class sizes and replacing some furniture to maximize physical distancing. At a minimum, KCKCC will follow all current county guidelines, and face mask/face covering are required. Multiple sanitation stations have been distributed across all facilities, and class times have been adjusted to reduce high student traffic in the hallways between classes.

Online

A significant number of courses will be offered in a traditional online format. Traditional online courses are delivered online, but do not have scheduled class meeting times. These courses will be listed as "online" in the class schedule.

Virtual

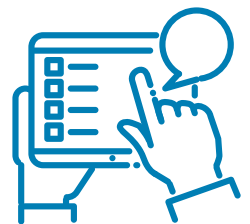
Other courses will continue to meet on a set schedule, but will do so online through Zoom or other video technology, as shown in WebAdvisor. For example, you might have a virtual class that will meet through Zoom from 10:00 am–10:50 am. Monday, Wednesday and Friday. The exact meeting days and times will be shown on WebAdvisor and on your class schedule. Virtual courses will be listed as "virtual" in the class schedule.

Blended

Classes that are delivered in a blended format will meet both face-to-face and online. These will be designated as "blended" in the class schedule.

Dates

All current Academic Calendar and Enrollment Management dates (for example: last day to add a class, last day to withdraw, etc.) will remain as currently published. <https://www.kckcc.edu/academics/academic-calendar/2020-2021-academic-calendar.html>



Spring Break Canceled (March 15-21, 2021)

Health and safety continue to be our top priority as we navigate through the COVID-19 pandemic. The cancellation of Spring Break 2021 is one of the measures we are taking to help prevent the spread of COVID-19 in our College community. Classes will be in session during the week of March 15-21, 2021. The College will be closed and classes will not meet on Friday, March 12, 2021.

Final Exams

Spring semester final exams are scheduled for May 4-10, 2021.

Student Services/Support

All student support services will continue in-person and/or remotely for the entire semester. Scheduling an appointment and taking advantage of remote/online student services is highly recommended. However, we will accept walk-ins while maintaining physical distancing protocols and wearing a face covering. Please refer to KCKCC COVID-19 webpage for contact information to make appointments. <https://www.kckcc.edu/communications/covid19/covid19-contact.html>

I Student Housing

Kansas City Kansas Community College is incorporating extra health and safety measures for student housing. The updates have been developed to enhance student safety and mitigate the potential spread of COVID-19.

Move-In

There will be multiple staggered and scheduled move-in days. Students must limit guests on move-in day to a max of 2 guests. No guest under the age of 16 will be permitted to enter student housing. Only 1 resident in a multi person room will be allowed to move in at a time. All students and their guests are expected to practice physical distancing. Mask/face covering is required of all students and guests. Students will need to bring their own dollies or carts for move in.

Rooms

Upon availability and for an additional cost, students may request to have a single room.

Small Room Single Request: Additional \$300

Large Room Single Request: Additional \$1,200



Self-isolation in Student Housing

Due to state and county regulations, students who traveled to any of the locations on the Kansas Department of Health and Environment (KDHE) list may need to self-isolate upon arrival in Kansas. The length of quarantine varies depending on whether you have been tested for COVID-19. This applies to both Kansas residents and those visiting Kansas.

This list is subject to change, please check the [Kansas Department of Health and Environment \(KDHE\)](#) website regularly. Students who are required to self-isolate due to state travel restrictions will have the option to start the self-isolation period in Student Housing.

- ▶ Students living in Student Housing that exhibits one or more COVID-19 symptoms, or tested positive for COVID-19 will need to self-isolate in an apartment provided by Student Housing. They may return to their regular apartment, 10 days from the onset of symptoms **OR** they are fever free for 72 hours, without medication that reduces fever **AND** other **symptoms** have improved. Whichever is longer. The individual should monitor his or her symptoms and call a doctor if concerned about the symptoms. Re-testing is not required to return to work/school. Student may choose to go home to self-isolate upon consultation with their family.
- ▶ Roommates and others with close contact to the infected individual will be required to **self-isolate in their Student Housing apartment for 14 days after exposure AND get tested for COVID-19, 7-9 days after they were exposed**. Student may choose to go home to self-isolate upon consultation with their family.
- ▶ Students that do not live in the apartment that is under self-isolation are not be permitted to enter the apartment during the self-isolation period.
- ▶ During self-isolation, students are not cleared for group activity, training, or competition.
- ▶ Anyone who needs to enter the apartment that has students under self-isolation, is required to wear appropriate PPE.

COVID-19 Testing for Students Living in Housing

KCKCC is taking precautions to avoid community spread of the COVID-19.

- ▶ Students moving into Student Housing are required to provide a COVID-19 test, 5-7 days prior to their scheduled move in date. Test results must be provided to the Campus Nurse.
- ▶ Students moving into Student Housing who were required to self-isolate upon arrival due to the Kansas travel restrictions, do not need to provide a COVID-19 test after completion of the self-isolation period.



Cleaning & Disinfecting

Sanitation supplies will be available to students upon move in. Students are encouraged to bring items to assist with a regular cleaning schedule. Mask/face covering, physical distancing, and health measures signage will be posted throughout the common areas. Signage will be posted in each room providing information on how to disinfect rooms/bathrooms. Common areas will be cleaned twice a day by the RA's and Housing Staff.

Guests in Student Housing

To limit the possible outside exposure of COVID-19, no outside guests are allowed in Student housing with the exception of parents/guardians.

- ▶ Students must schedule parent/guardians visit 48 hours in advance with Student Housing staff.
- ▶ Mask/face covering is required upon entry to common areas and apartments.
- ▶ Guest curfew starts at 9:00 pm.
- ▶ No overnight guests permitted.

Mail

- ▶ Students may pick up their mail at the Student Housing Office between 3:00 pm – 6:00 pm M-F.
- ▶ All mail picked up by the KCKCC Student Housing staff from the Royal Ridge Management Office will go through a disinfecting process prior to being delivered to the students.
- ▶ No packages will be accepted at the Royal Ridge Management Office.
- ▶ Students expecting packages will need to make arrangement to pick up the package at the shipping location. (UPS, FedEx, etc.)

I KCKCC Facility Rentals and Special Events



Gatherings

Currently, we are under Phase 3 which indicates groups of 45 or less are allowed on campus. In addition to keeping the number of people to no more than 45, physical distancing of six feet or more should be maintained. All individuals will be required to wear a face covering while in buildings and outdoors where physical distancing is not possible.

Facility Rentals

KCKCC is putting health and safety at the forefront when looking at hosting events that traditionally bring large groups of people into confined spaces. As such, every event will be

reviewed and considered on an individual basis relevant to the number of anticipated people, the venue and the status of COVID-19 at the time.



Athletic Events

KCKCC athletics will resume competition for all sports in the spring 2021 season. KCKCC Athletics will follow the return to play recommendations from NJCAA, KJCCC and the local Health Department. KCKCC Athletics will continue to monitor recommendations from NJCAA, KJCCC and the local Health Department.

No fans will be allowed at ANY of the KCKCC Home athletic contests for the spring.

Athletes Safety

In efforts to provide the safest environment possible for our student athletes and to mitigate the potential spread of COVID-19, we are incorporating extra health and safety measures.

- ▶ Student Athletes that in the last 14 days traveled to/from locations that are identified by the Kansas Department of Health and Environment (KDHE) will need to self-isolate for 14 days in their room upon arrival and prior to starting practice.
- ▶ All athletes must provide a negative COVID-19 test no more than five days before starting practice or training.
- ▶ Athletes who are unable to provide negative COVID-19 test will not be allowed to practice until a valid COVID-19 test is provided.

Additional Resources:

KCKCC COVID-19 website. <https://www.kckcc.edu/communications/covid19/index.html>



County COVID-19 website. <https://alpha.wycokck.org/Coronavirus-COVID-19-Information>

State plan or COVID-19 website. <https://covid.ks.gov/ad-astra-a-plan-to-reopen-kansas/>
CDC COVID-19. <https://www.cdc.gov/coronavirus/2019-nCoV/index.html>

If you are sick. <https://www.cdc.gov/coronavirus/2019-ncov/if-you-are-sick/index.html>

Symptoms of COVID-19. <https://www.cdc.gov/coronavirus/2019-ncov/symptoms-testing/symptoms.html>

Legal and Medical Disclaimer: The information contained in this document does not constitute legal or medical advice.